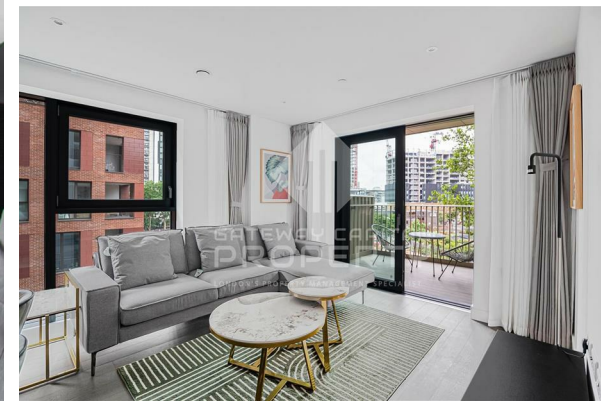
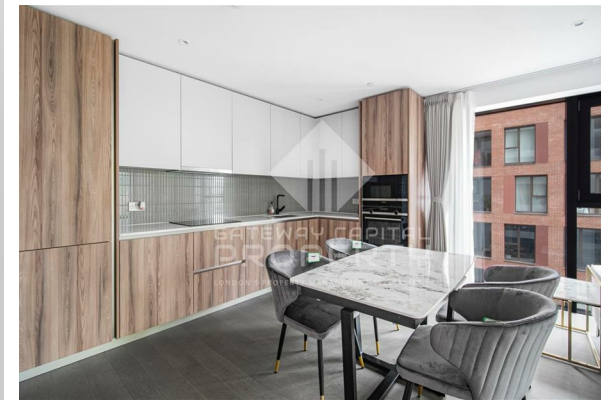




**GATEWAY CAPITAL
PROPERTY**

LONDON'S PROPERTY MANAGEMENT SPECIALIST



£3,450 Per month 11 HOURS WEEKLY

- Brand new 2 Bed 2 Bath
- Resident's Gym
- Full furnished
- Garden Facing
- 24/7 Concierge

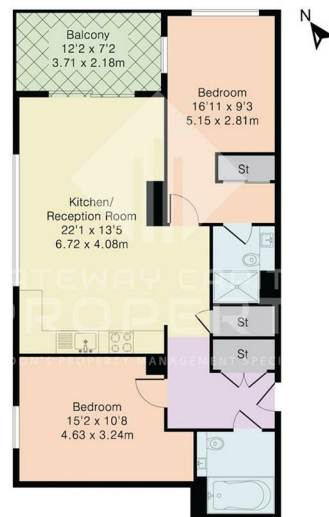
THE PROPERTY

A large brand new two bedroom apartment within the modern development Elephant Park.

The development is a short walk to Elephant & Castle tube/train stations making this an easy commute into The City. The property is also spoilt for choice with cafés, bars and restaurants including the popular Mercato Metropolitano.

All images used are for illustrative purposes only and do not represent actual property. Furniture and dimensions for this property type may differ.

Approximate Gross Internal Area 887 sq ft – 83 sq m
 Third Floor Area 804 sq ft – 75 sq m
 Balcony Area 83 sq ft – 8 sq m



SITUATION

Directions