



**GATEWAY CAPITAL
PROPERTY**

LONDON PROPERTY MANAGEMENT SPECIALISTS



TO LET



£819,500

APPLY NOW

- Located in Hampstead, London's greenest suburb
- Residents' town car service, runs from Hampstead Manor to the nearby train and tube stations of Hampstead along with Hampstead Village
- Just 9 minutes to Bond Street and 10 minutes to Kings Cross St Pancras
- Surrounded by exceptional educational institutions for all ages
- 24-hour concierge
- Residents' gym, spa, swimming pool and sauna
- Landscaped gardens and open green spaces

THE PROPERTY

Few places in the world can boast such richness in architecture and history as the prized north London enclave of Hampstead.

Located only moments from Hampstead Village, Hampstead Manor embraces all the qualities that have long made NW3 one of Britain's most desirable postcodes.

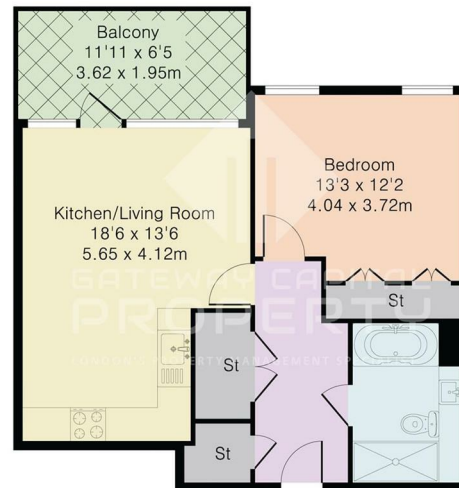
Situated within the prestigious Hampstead Manor, this one bedroom apartment has an open plan kitchen and reception with integrated appliances and floor to ceiling windows. The bedroom has a built in wardrobe and further benefits include a storage cupboard, wooden flooring throughout and a fully tiled bathroom.

Residents have access to the development's 24 hour concierge service and private spa and gym. Facilities include a swimming pool, sauna, steam room, Jacuzzi, fully-equipped gymnasium and changing facilities.

Outside, leafy pathways lead through landscaped gardens. Maintained and seasonally re-planted, these are green spaces to be savoured.

Residents' town car service, runs from Hampstead Manor to the nearby train and tube stations of Hampstead along with Hampstead Village

Approximate Gross Internal Area 546 sq ft – 51 sq m
Balcony Area 76 sq ft – 7 sq m
Total Area 622 sq ft – 58 sq m



SITUATION

Directions