



GATEWAY CAPITAL
PROPERTY

LONDON'S PROPERTY MANAGEMENT SPECIALIST



TO LET

£450,000



- Canary Wharf and Dock views
- One Bedroom
- High Floor
- Private Balcony
- Residents Concierge and Gym
- No Chain
- West Facing
- Partial River Thames Views

THE PROPERTY

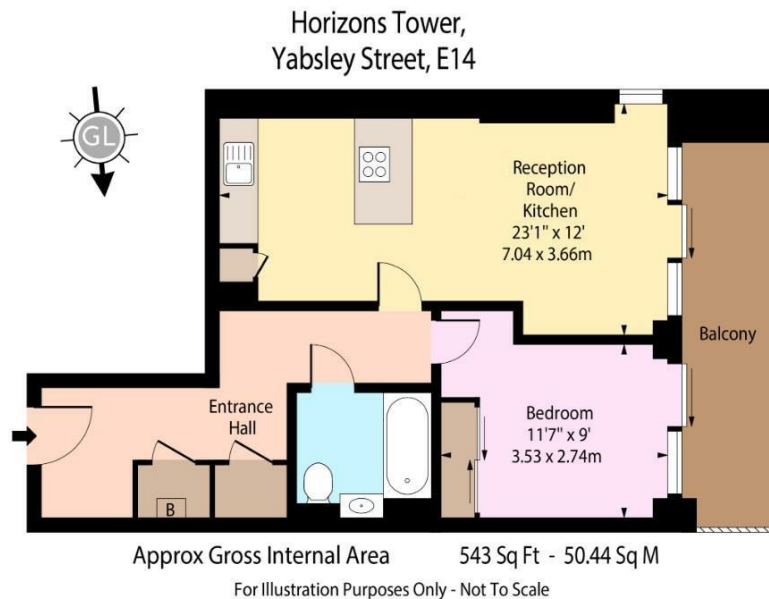
A Stunning 1 Bedroom apartment with direct views towards Canary Wharfs famous skyline and Docks. This dual facing South/West Facing Apartment also boasts Thames River Thames views from the reception and offers residents facilities including a Concierge and fully equipped Gym. Walking distance to Canary Wharfs many Shops, Restaurants, Offices and the Jubilee station via the recently opened Wood Wharf District which, has created quicker access and further facilities for the area including a supermarket.

This One bedroom apartment is situated on the 13th Floor and has an open plan kitchen living and dining space with breakfast bar and a modern kitchen. Bedroom with built in wardrobes and bathroom with shower over bath. Ample storage in the hall and a full width balcony accessible from the bedroom and lounge, boasting the apartments main feature- the views!

This apartment would make a great first time home or a rental opportunity with a proven track record of high yields and minimal void periods. Available for quick completion if required, Vacant or pre-let.

N.B. Personal Interest Applies

SITUATION



Directions