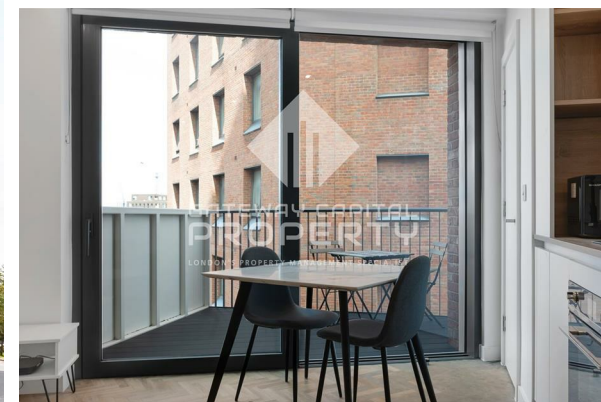
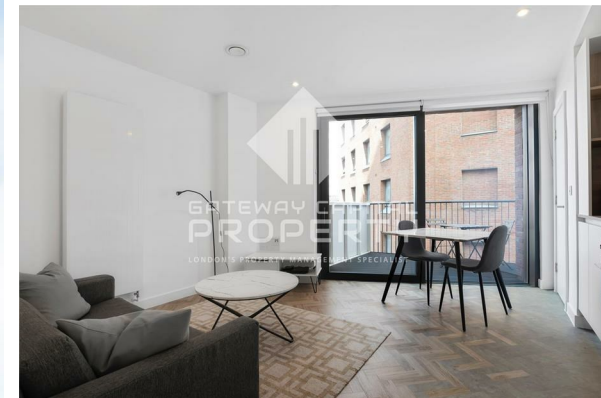


**GATEWAY CAPITAL  
PROPERTY**  
LONDON'S PROPERTY MANAGEMENT SPECIALIST

**TO LET**

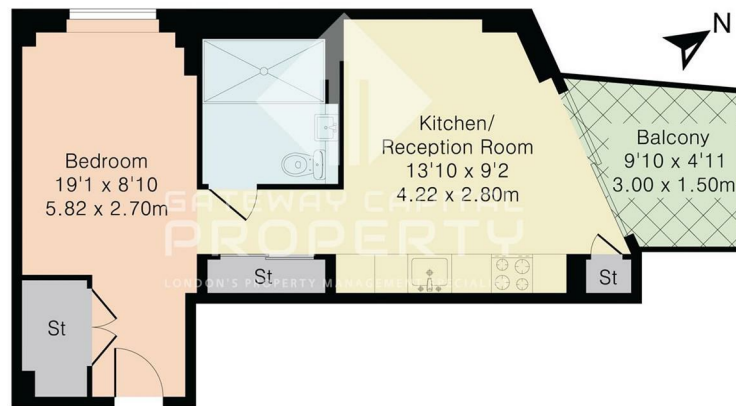
**£265,000**





- HUGE discount on price
- Concierge, residents cinema, communal gardens, residents roof terrace
- Close to Bromley-by-Bow station (District Line, Hammersmith & City Line)
- Close to Devons Road station (DLR)
- Open plan kitchen
- Must view opportunity

Approximate Gross Internal Area 438 sq ft – 41 sq m  
 Balcony Area 62 sq ft – 6 sq m  
 Total Area 500 sq ft – 47 sq m



Seventh Floor Flat

## Directions

## THE PROPERTY

Located where the three waters of Bow Creek, the River Lea and Limehouse Cut meet in the heart of east London, Three Waters sits within the city's fastest growing area, offering waterside living with a metropolitan context.

This open-plan one-bedroom apartment in River Apartments set in the newly completed Three Waters development, with a 24-hour concierge, cycle storage, landscaped garden and residents roof terrace.

The paths lead to the Olympic Village and Park in Stratford in the north, and the Thames and Canary Wharf in the south. Across the River Lea is the historic Three Mills Green and Three Mills Island and the studio. Nearby the development is a large Tesco Superstore, and Stratford Shopping Centre is a short distance away.

The development is located a short distance from Bromley-by-Bow and Mile End Underground stations (Central, District, Hammersmith & City and DLR) as well as Devons Road DLR station.

## SITUATION