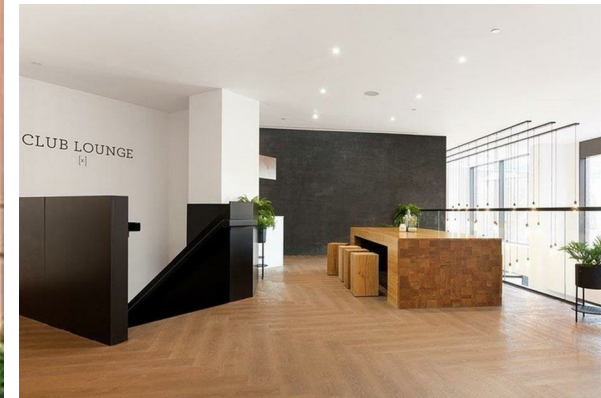




**GATEWAY CAPITAL
PROPERTY**
LONDON'S PROPERTY MANAGEMENT SPECIALIST

TO LET



£950,000 **THE MANSION** **OWNERS**

- Larger than average 2 bedroom flat
- Swimming Pool & Spa Facilities
- Walking Distance to Vauxhall Station
- 24 Hour Concierge
- Residents Gym

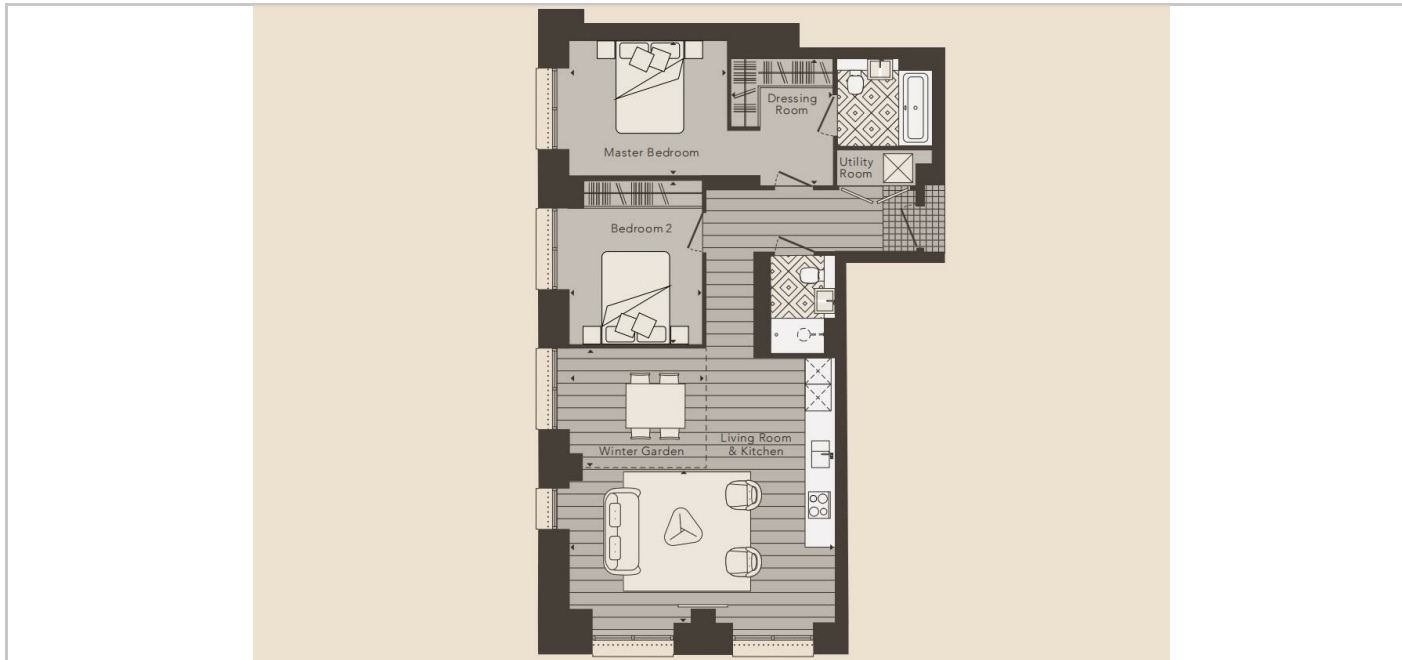
THE PROPERTY

A well-presented, bright and spacious 2 bedroom apartment, a popular residential development completed in 2020.

Located only moments from Vauxhall Station, this superb 2 bed, 2 bath apartment presents luxury, neutral interiors, wooden flooring and well proportioned accommodation.

Residents enjoy a 24-hour concierge service, state of the art gymnasium, 15 metre swimming pool and access to the Keybridge Club Lounge. Keybridge also benefits from an on-site Gail's Bakery and is a short walk from both Nine Elms & Vauxhall Stations providing very easy access across London.

Keybridge Tower is moments from Vauxhall tube station (Victoria Line) giving you easy access to Oxford Circus and Kings Cross. Local amenities with a variety of shops and restaurants are also nearby. Vauxhall Park are just a moments away.



SITUATION

Directions