



**GATEWAY CAPITAL  
PROPERTY**

LONDON'S PROPERTY MANAGEMENT SPECIALIST



**TO LET**

£2,850 Per month

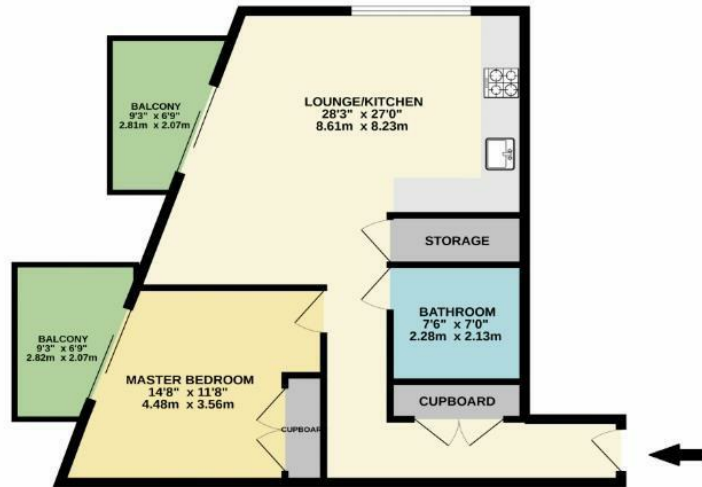
- 24 Hour Concierge
- Residents Swimming Pool and Gym
- Working Space
- 2 Balconies
- Communal Gardens

## THE PROPERTY

Keybridge Apartments is a stunning new development located very close to Vauxhall station. The amenities include a 24-hour dedicated concierge, swimming pool, business lounge and a private residents gym.

Based in Vauxhall, Keybridge Apartments is located very close to Vauxhall underground and train station, providing fantastic transport connections into London. The development will further benefit from the opening of Nine Elms underground station.

The spacious 1-bedroom apartment comprises of a large open plan living area with a generous amount of storage in the hallway. The apartment benefits from two balcony overlooking the city view of London.



## SITUATION

### Directions