



**GATEWAY CAPITAL  
PROPERTY**  
LONDON'S PROPERTY MANAGEMENT SPECIALIST



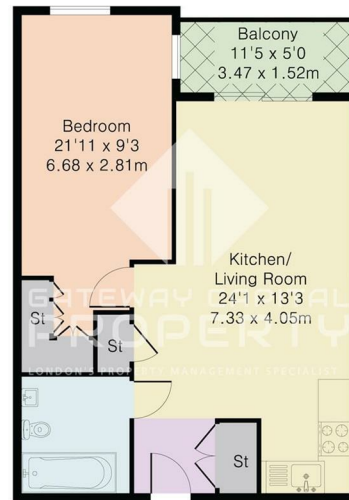
**TO LET**



**£2,350 Per month**

- Balcony with Lakeview
- 24 hour concierge
- Newly built in zone 2
- Available from 17th June
- Residents' swimming pool & gym
- 8 minutes tube to King's Cross
- Unique waterside location and thriving community

Approximate Gross Internal Area 533 sq ft – 50 sq m



Third Floor

## THE PROPERTY

North London's Woodberry Down is an innovative Regeneration Project, set in 64 acres adjacent to the spectacular natural surroundings of two existing reservoirs and Finsbury Park, all within a short distance of Central London and the City.

This bright and spacious 1-bed flat has a balcony with direct Lakeview, also benefits from the underfloor heating, open-plan kitchen, luxury bathroom, excellent storage and resident's only lounge, 24-hour concierge, swimming pool, gym and spa.

Located only 3 minutes from Manor House Underground Station (Piccadilly line), takes 8 minutes to King's Cross and 20 minutes to the City.

## SITUATION

## Directions