



**GATEWAY CAPITAL  
PROPERTY**

LONDON'S PROPERTY MANAGEMENT SPECIALIST



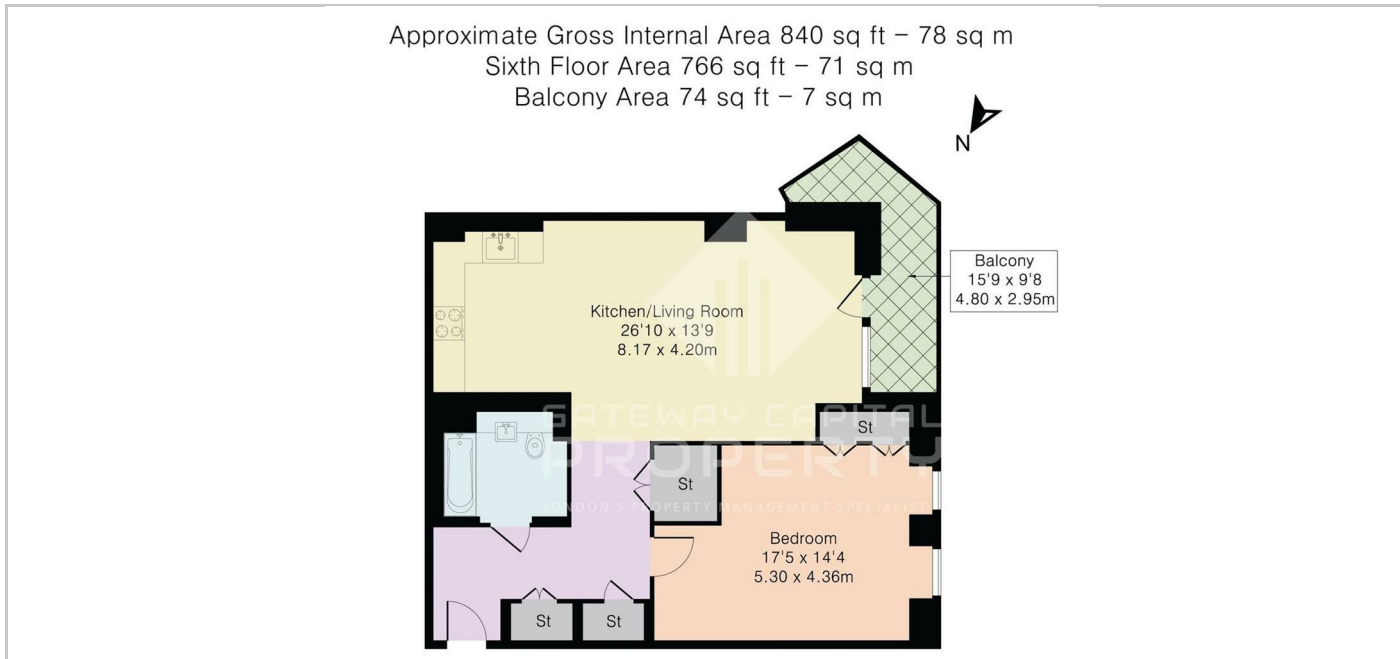
**TO LET**

**£2,160 Per month**

- Brand new, Larger than normal, 766 sft
- Less than a minutes' walk to Acton Main Line station (Elizabeth line)
- Dedicated 24-hour concierge
- Gym, cycle hub and Business lounge
- Connections far and wide with 7 stations in walking distance
- Landscaping designed in partnership with Royal Botanic Gardens, Kew

## THE PROPERTY

Welcome to The Verdean. Reimagining life in the capital, reconnecting you with the city and nature. Covering nearly six acres in Acton W3, green spaces are around every corner and now connected better than ever, with the Elizabeth line on your doorstep, allowing you to reach the heart of the city in no time. Elizabeth line at Acton Main Line Station is just minute away from The Verdean, providing fast and easy links to the capital. Get to Bond Street in 9 minutes, the City in 14 minutes , Heathrow Airport in 18 minutes and Canary Wharf in 23 minutes.



## SITUATION

## Directions