



## Carlton Road, Gidea Park, RM2 5BB £2,000 Per Calendar Month

 3  1  2  E

**\*\* IDEAL 3 BED FAMILY HOME LOCATED WITHIN A SHORT WALK TO GIDEA PARK STATION - AVAILABLE IMMEDIATELY \*\***

OC Homes are delighted to offer to the Lettings market, this well presented three-bedroom terraced house with off street parking. Accommodation comprises; Ground Floor; entrance hallway, reception room, kitchen / diner, and a good size rear garden. The first floor has three bedrooms and a three piece family bathroom.

Other benefits include a very good size rear garden and off street parking, as well as a number of local amenities. The property is located in a prime location off Balgore Lane, close to Gidea Park Station on the Elizabeth Line, with all amenities and public transport links being within a short walk from the property. To arrange a viewing please call the OC Homes Lettings team now.

**AVAILABLE IMMEDIATELY**

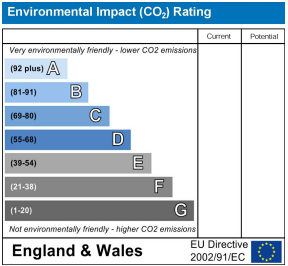
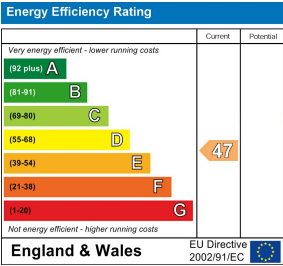
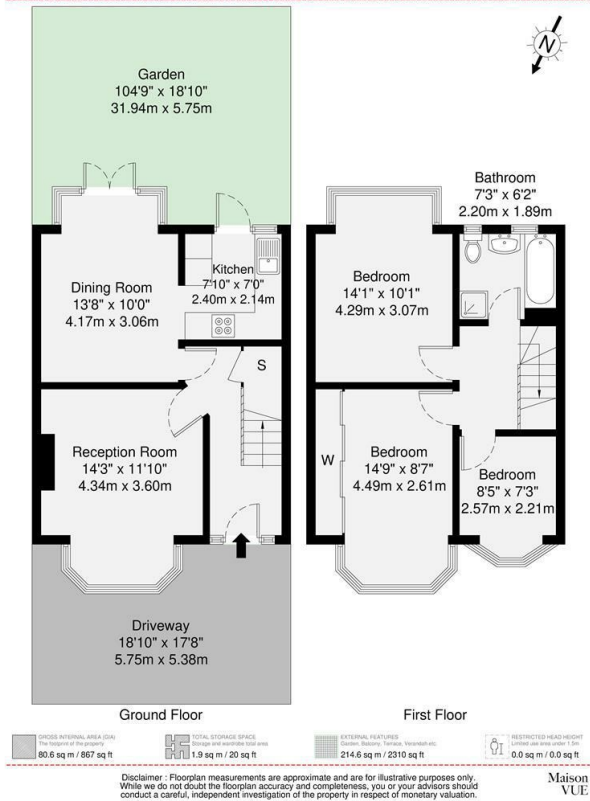
- THREE BEDROOM TERRACED HOUSE
- LARGE REAR GARDEN
- OFF STREET PARKING
- SHORT WALK TO GIDEA PARK STATION
- LOTS OF LOCAL AMENITIES
- EXCELLENT TRANSPORT LINKS
- IDEAL FAMILY HOME
- AVAILABLE IMMEDIATELY

### Viewing

Please contact our OC Homes Gidea Park Office on 01708989888 if you wish to arrange a viewing appointment for this property or require further information.







These particulars, whilst believed to be accurate are set out as a general outline only for guidance and do not constitute any part of an offer or contract. Intending purchasers should not rely on them as statements of representation of fact, but must satisfy themselves by inspection or otherwise as to their accuracy. No person in this firm's employment has the authority to make or give any representation or warranty in respect of the property.