



## South Hall Drive, Rainham, RM13 9HS

### Offers In The Region Of £475,000

4 2 1 E

**\*\* BEAUTIFULLY PRESENTED 4 BED TERRACED HOUSE WITH GARAGE IN RAINHAM. CLOSE TO RAINHAM C2C & LOCAL PARKS \*\***

**\* VIRTUAL TOUR AVAILABLE ONLINE \***

OC Homes are delighted to present to the sales market this lovely four bedroom family home in Rainham, RM13. The property is located within a nice, quiet residential street with a garage and lovely garden with rear access. The property is ideally located in a sought after part of Rainham being a short walk from Rainham Station on c2c line and close to a local park and a number of local amenities.

The property has been fully renovated by the owners when they acquired it, with every aspect improved and modernised throughout, including new kitchen and bathroom and a new heating system. Accommodation comprises; ground floor - entrance hallway, double reception room with dining area, modern kitchen and well maintained south-easterly facing rear garden which can be accessed via French doors from the dining area or from kitchen. The garden also contains a garage and rear access. First Floor; three well decorated bedrooms and modern three piece bathroom suite, with a further double bedroom and shower room on the second floor (converted loft space). Externally there is a well maintained private rear garden with rear access and a paved front garden.

The property boasts many local amenities including shops, restaurants, pubs and gyms all within easy reach as well as a choice of local schools, and a number of transport links with it being just a 15 min walk (0.7 miles) to Rainham Station (c2c Line). To arrange a viewing please call the OC Homes Sales team now.

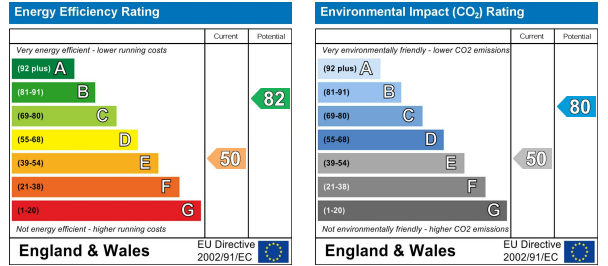
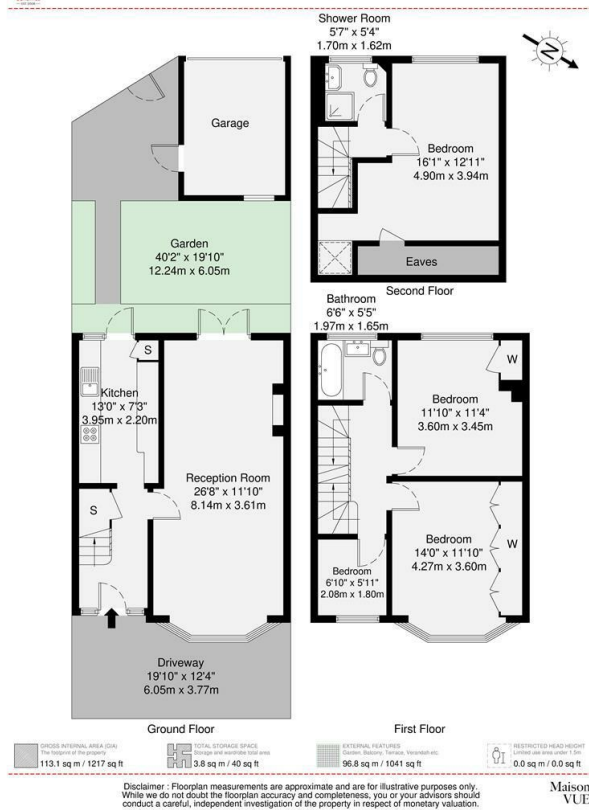
- FULLY RENOVATED 4 BED 2 BATH HOUSE
- EXCELLENT CONDITION THROUGHOUT
- SOUTH FACING GARDEN WITH REAR ACCESS
- GARAGE TO THE REAR
- 0.7 MILES TO RAINHAM STATION
- LOTS OF LOCAL AMENITIES
- LOCAL PARK AT TOP OF ROAD
- IDEAL FAMILY HOME

### Viewing

Please contact our OC Homes Gidea Park Office on 01708989888 if you wish to arrange a viewing appointment for this property or require further information.







These particulars, whilst believed to be accurate are set out as a general outline only for guidance and do not constitute any part of an offer or contract. Intending purchasers should not rely on them as statements of representation of fact, but must satisfy themselves by inspection or otherwise as to their accuracy. No person in this firm's employment has the authority to make or give any representation or warranty in respect of the property.