

Amery Gardens, Romford, RM2 6RR £2,000 Per Calendar Month

 3  1  1  C

****WELL-PRESENTED HOME WITH A DRIVEWAY, SITUATED IN A PRIME LOCATION, CLOSE TO GIDEA PARK STATION****

OC Homes are delighted to offer this newly refurbished three-bedroom terrace house. The property boasts a large through lounge, fitted kitchen, three bedrooms, and a three-piece bathroom suite.

Other benefits include laminate flooring throughout, a large garden that includes a shed for extra storage, a driveway for one vehicle, and is in an ideal location within Gidea Park, making this an ideal family home.

AVAILABLE 30/05/2024!

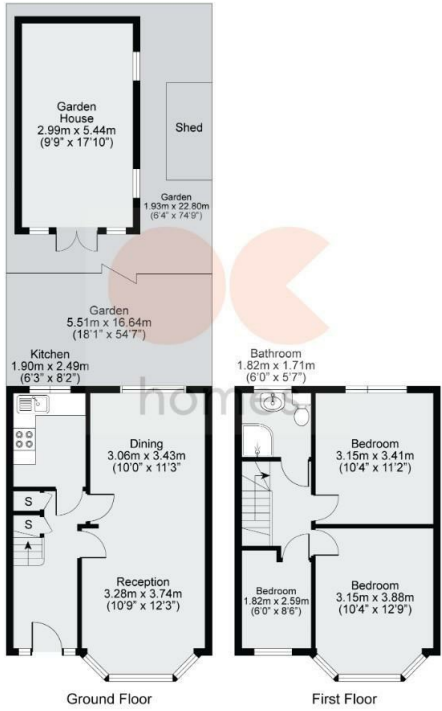
- AVAILABLE 30/05/2024
- WELL-PRESENTED
- LAMINATE FLOORING
- WALKING DISTANCE TO GIDEA PARK STATION (ELIZABETH LINE)
- DRIVEWAY
- THROUGH LOUNGE

Viewing

Please contact our OC Homes Gidea Park Office on 01708989888 if you wish to arrange a viewing appointment for this property or require further information.



Amery Gardens, Romford, RM2
 Approx. Gross Internal Area = 73.2sqm / 787.9sqft



Disclaimer: Floorplan measurements are approximate and are for illustrative purposes only. While we do not doubt the floorplan accuracy and completeness, you or your advisors should conduct a careful, independent investigation of the property in respect of monetary valuation.

Maison VUE



Energy Efficiency Rating	
Current	Potential
70	91

Very energy efficient - lower running costs

England & Wales

Environmental Impact (CO ₂) Rating	
Current	Potential
68	100

Very environmentally friendly - lower CO₂ emissions

England & Wales



These particulars, whilst believed to be accurate are set out as a general outline only for guidance and do not constitute any part of an offer or contract. Intending purchasers should not rely on them as statements of representation of fact, but must satisfy themselves by inspection or otherwise as to their accuracy. No person in this firm's employment has the authority to make or give any representation or warranty in respect of the property.



164 Balgores Lane, Gidea Park, Essex, RM2 6BS
 t. 01708989888 | e. hello@ochomes.co.uk
 w. oneclickhomes.co.uk