

# Housetypes

- Standard
- Bespoke
- Brand New House Type



## The Aster

Plot numbers 156, 160, 162, 165, 177, 215, 216, 217 & 265

Summary points

5 key points (minimum)

ie



House

Open-plan kitchen, dining and family area



3 Bathrooms/En Suites

Utility room

French doors to rear garden



4 Bedrooms

Detached garage

En suite to bedrooms 1 and 2

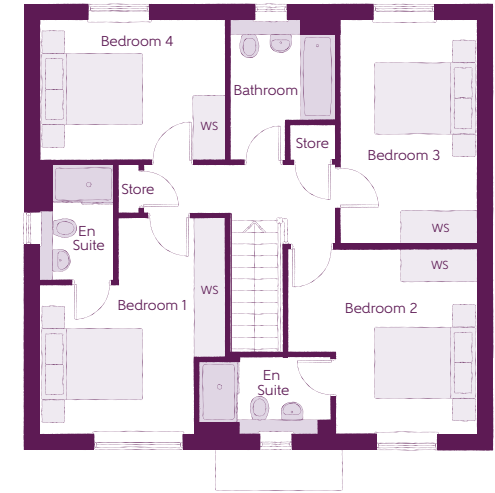


1,494 Sq.ft.



Ground Floor

<b>Kitchen/Dining/Family</b>	8.56m x 3.22m (max)	28'1" x 10'7" (max)
<b>Living Room</b>	3.59m x 4.74m	11'9" x 15'7"
<b>Dining Room</b>	2.67m x 3.02m	8'9" x 9'11"
<b>Utility</b>	1.98m x 1.63m	6'6" x 5'4"
<b>Cloakroom</b>	0.90m x 2.06m	3'0" x 6'9"



First Floor

<b>Bedroom 1</b>	3.65m x 4.26m (max)	12'0" x 14'0" (max)
<b>Bedroom 1 En Suite</b>	1.44m x 2.28m	4'9" x 7'6"
<b>Bedroom 2</b>	3.69m x 3.65m (max)	12'1" x 12'0" (max)
<b>Bedroom 2 En Suite</b>	2.60m x 1.53m (max)	8'6" x 5'0" (max)
<b>Bedroom 3</b>	2.66m x 4.38m	8'9" x 14'4"
<b>Bedroom 4</b>	3.65m x 2.71m	12'0" x 8'11"
<b>Bathroom</b>	2.08m x 2.71m (max)	6'10" x 8'11" (max)

Clks - Cloakroom WS - Wardrobe Space (suggestion only, wardrobe not included)

**Furniture arrangements are for illustrative purposes only. Items are not included, nor to scale.**

The items shown in this key may be subject to change, and positions could vary from those indicated on this floorplan. Please refer to Sales Advisor for details of your selected plot. Computer generated image shown overlaid. External finishes, landscaping and configuration may vary from plot to plot. Please refer to Sales Advisor for further details. All dimensions are approximate and should not be used for carpet sizes, appliance spaces or furniture. We operate a policy of continuous improvement and individual features such as kitchen and bathroom layouts, doors, windows, garages and elevational treatments may vary from time to time. Consequently these particulars should be treated as general guidance only and do not constitute a contract, part of a contract or a warranty. GO/CB/130/500/D/01/H.