



Tel: 02392864555

30 Landport Terrace, Southsea PO1
2RG

hello@soanegroup.co.uk

Oyster Quay, Port Solent

£350,000





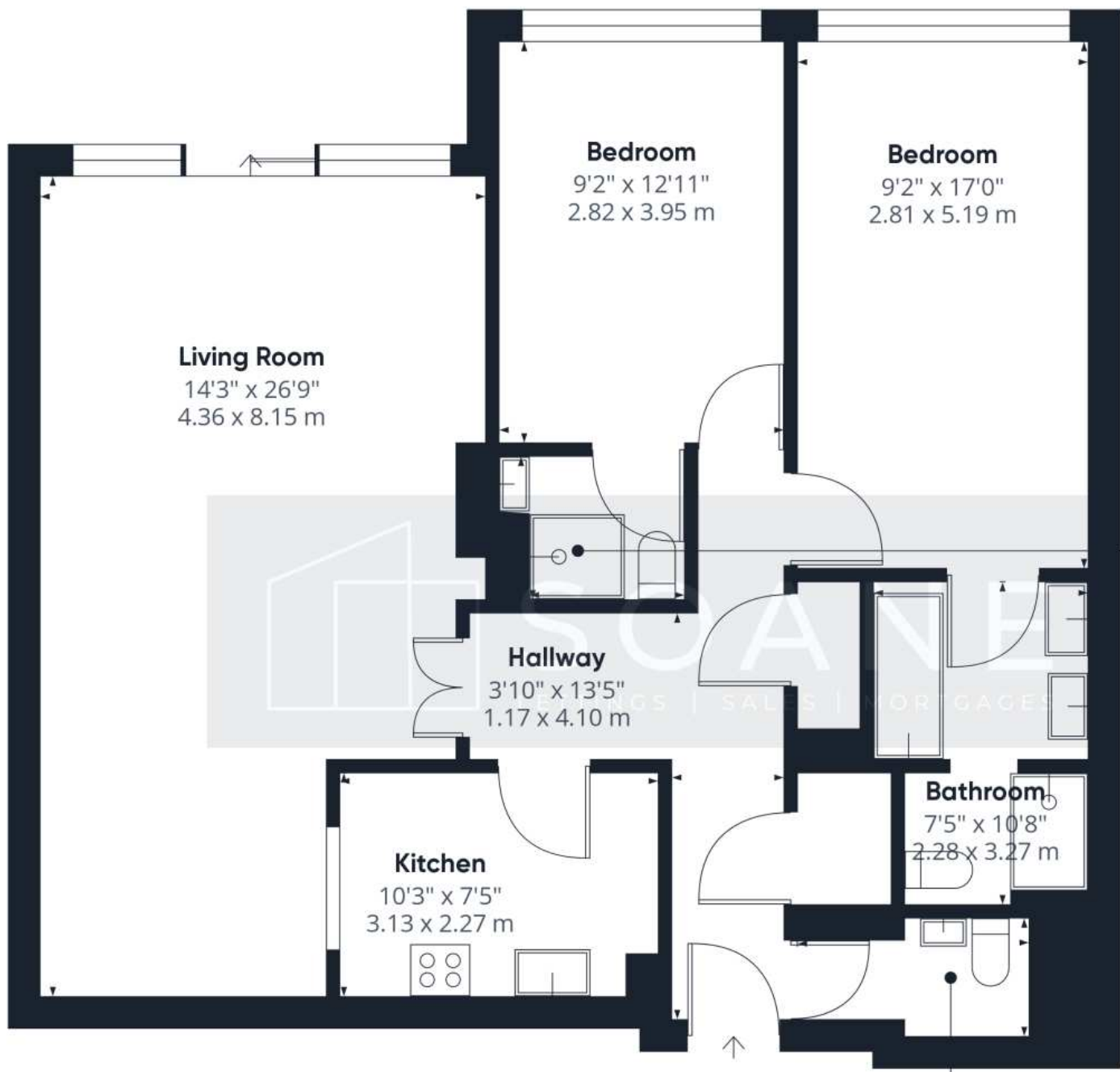
Soane are thrilled to bring you this two bedroom apartment with breathtaking views over the Port Solent Marina. With two en-suites a balcony and access to a private residents only leisure facility including a gym, sauna, hot tub and pool.





Soane are thrilled to bring you this two bedroom apartment with breathtaking views over the Port Solent Marina. With two en-suites a balcony and access to a private residents only leisure facility including a gym, sauna, hot tub and pool.





Living Room
14'3" x 26'9"
4.36 x 8.15 m

Bedroom
9'2" x 12'11"
2.82 x 3.95 m

Bedroom
9'2" x 17'0"
2.81 x 5.19 m

Bathroom
5'5" x 4'9"
1.67 x 1.46 m

Hallway
3'10" x 13'5"
1.17 x 4.10 m

Kitchen
10'3" x 7'5"
3.13 x 2.27 m

Bathroom
7'5" x 10'8"
2.28 x 3.27 m

WC
7'7" x 4'1"
2.32 x 1.25 m

Approximate total area⁽¹⁾
942.7 ft²
87.58 m²

(1) Excluding balconies and terraces

While every attempt has been made to ensure accuracy, all measurements are approximate, not to scale. This floor plan is for illustrative purposes only.

Calculations are based on RICS IPMS 3C standard.



SOANE

LETTINGS | SALES | MORTGAGES