



Tel: 02392864555

30 Landport Terrace, Southsea PO1
2RG

hello@soanegroup.co.uk

Lion Terrace, Portsmouth

£170,000



Soane are delighted to bring you Lion House.

A great two bedroom apartment close to Gunwharf and routes in and out of the city.

With allocated parking, a balcony and master bedroom it's perfect for a first time buyer or keen investor.

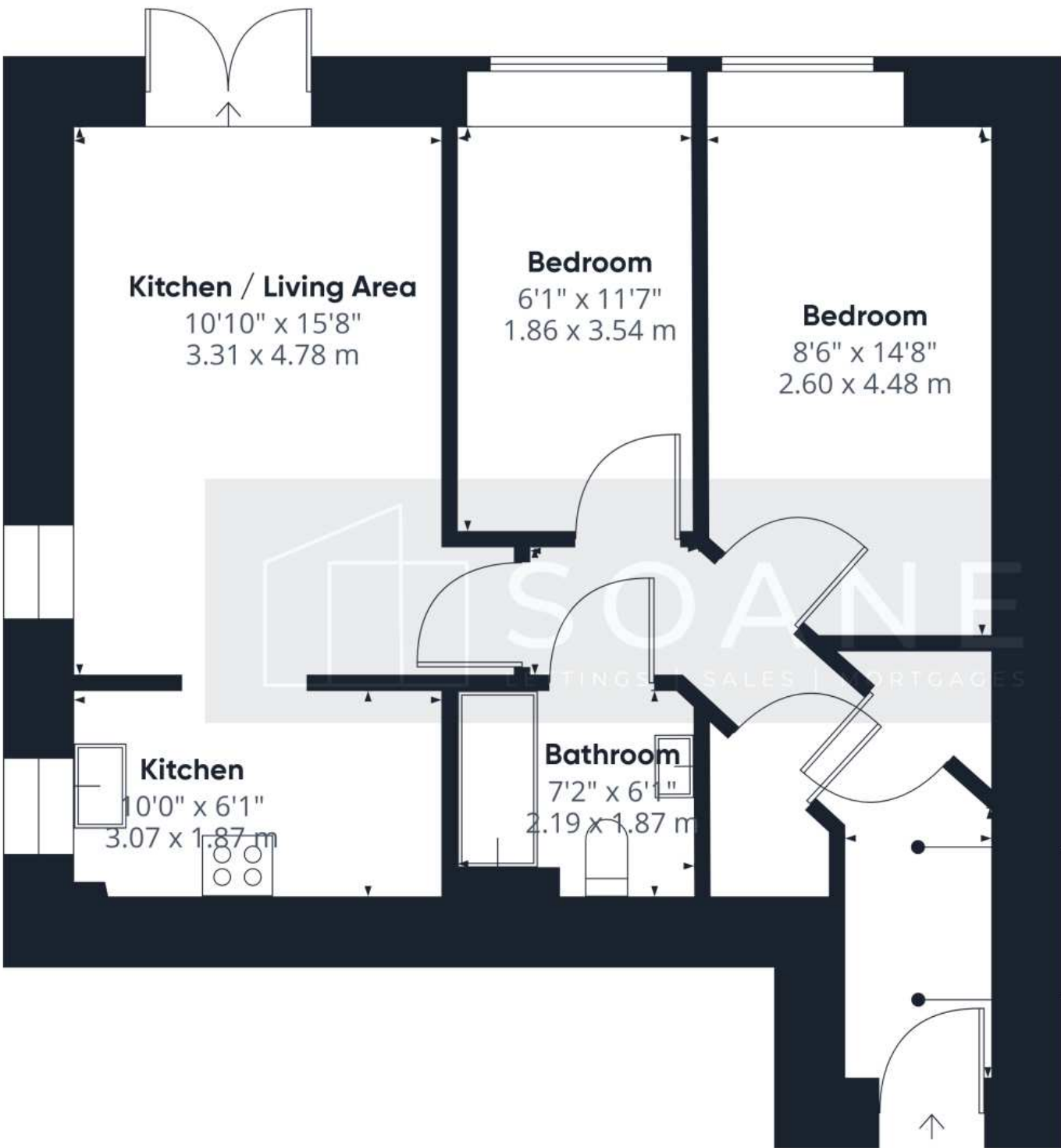
£1,514 p.a. Service Charge

£500 p.a. Ground Rent

138 Years Remaining

Parking Space





Approximate total area⁽¹⁾

592.78 ft²

55.07 m²

(1) Excluding balconies and terraces

While every attempt has been made to ensure accuracy, all measurements are approximate, not to scale. This floor plan is for illustrative purposes only.



SOANE

LETTINGS | SALES | MORTGAGES