



Tel: 02392864555
30 Landport Terrace, Southsea PO1
2RG

hello@soanegroup.co.uk

Duke Crescent, Portsmouth

OFFERS IN EXCESS OF £216,500



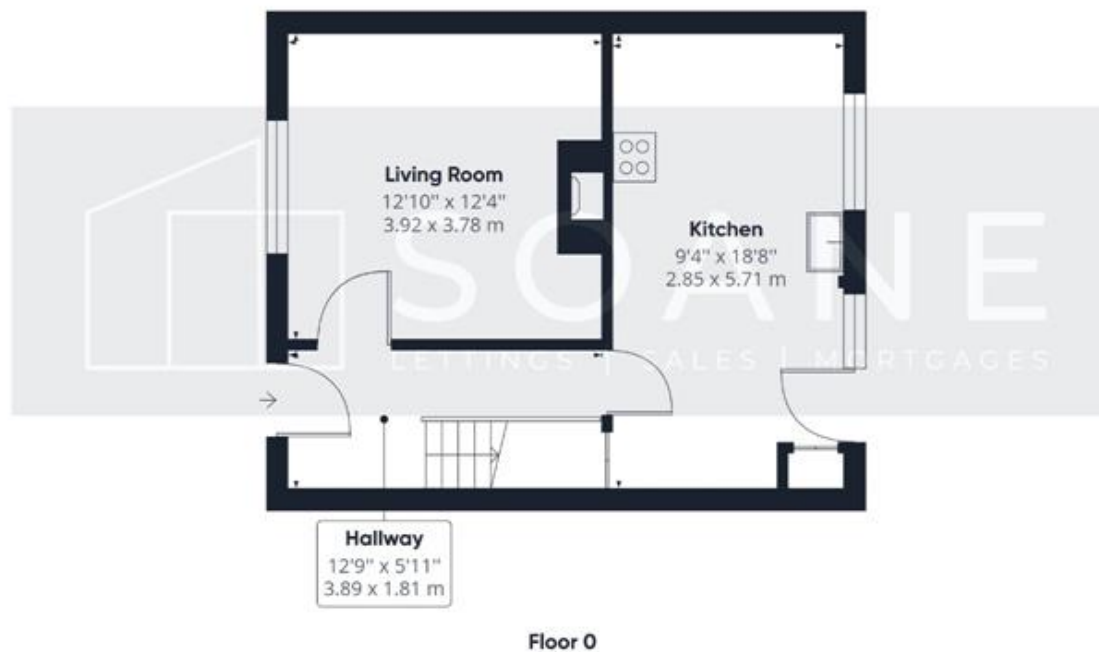


Soane welcome this fantastic three bedroom end of terrace house situated in a central Portsmouth location.

Airy and bright throughout with an upstairs bathroom and generous sized garden. The property is close to excellent bus routes and travel links in and out of the city and a short distance to Commercial Road where you will find a variety of shops and amenities.

Offered chain free this property would ideally suit first time buyers, families and investors.

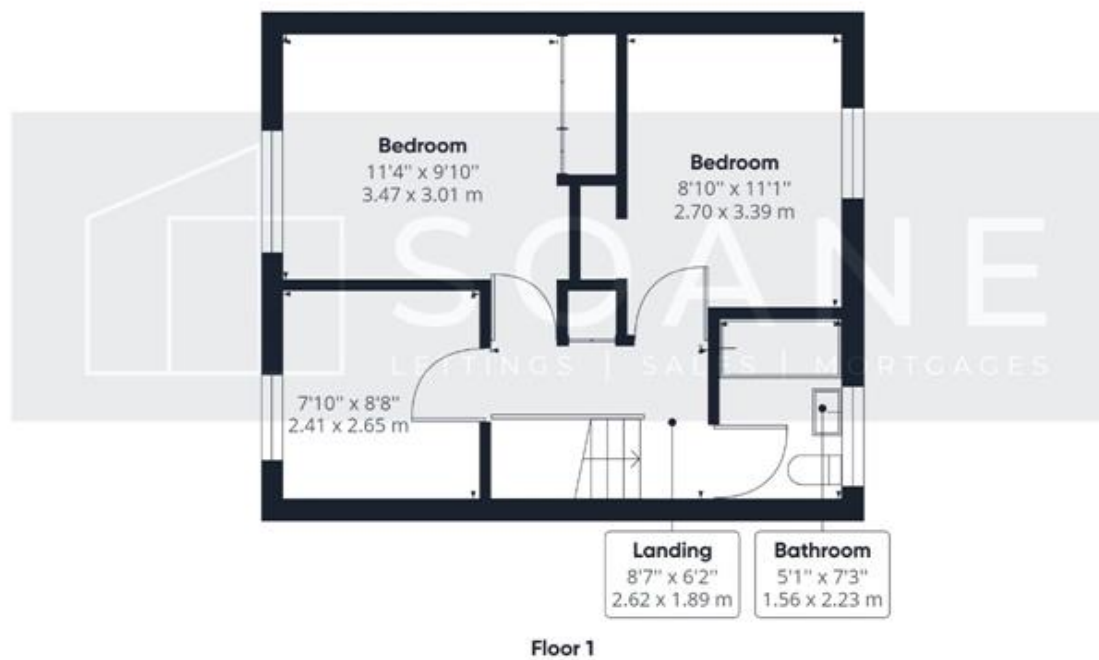




Approximate total area⁽¹⁾

804.50 ft²

74.74 m²



(1) Excluding balconies and terraces

While every attempt has been made to ensure accuracy, all measurements are approximate, not to scale. This floor plan is for illustrative purposes only.

GIRAFFE 360



SOANE

LETTINGS | SALES | MORTGAGES