



Tel: 02392864555

30 Landport Terrace, Southsea PO1
2RG

hello@soanegroup.co.uk

Justin Close, Fareham

PRICE £190,000





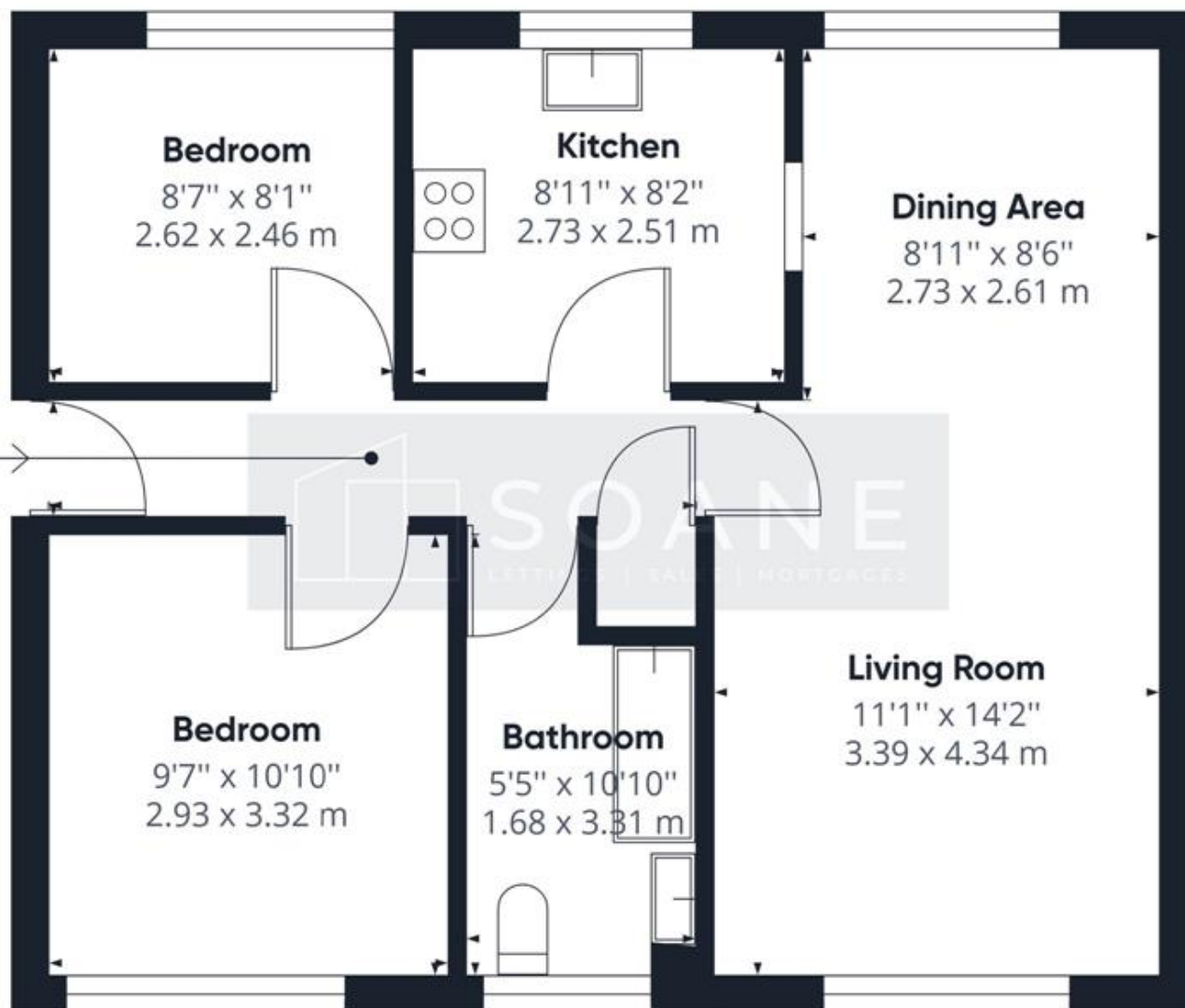
****GARAGE**** Welcome to Justin Close! Nestled in a quiet cul-de-sac location, with a garage and being in walking distance to Fareham College this property really is a hidden gem, come and take a look around..





****GARAGE**** Welcome to Justin Close! Nestled in a quiet cul-de-sac location, with a garage and being in walking distance to Fareham College this property really is a hidden gem, come and take a look around..





Approximate total area⁽¹⁾

602.79 ft²

56.00 m²

(1) Excluding balconies and terraces

While every attempt has been made to ensure accuracy, all measurements are approximate, not to scale. This floor plan is for illustrative purposes only.

GIRAFFE 360



SOANE

LETTINGS | SALES | MORTGAGES