



## Noel Street

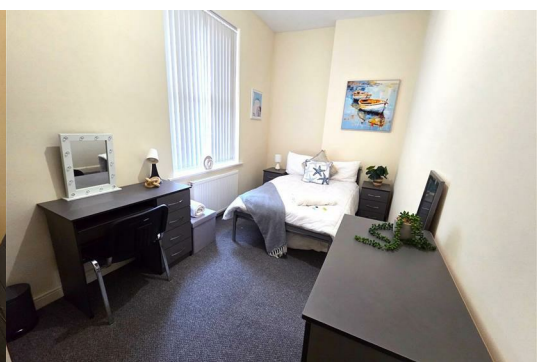
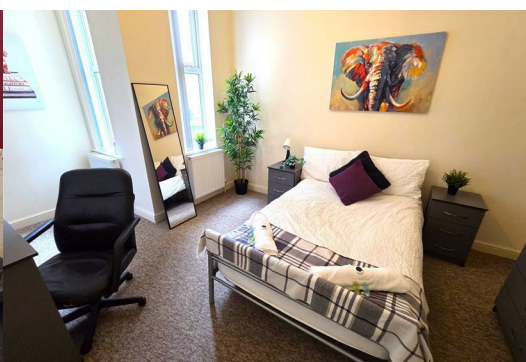
, Nottingham, NG7 6AQ

£95 Per week



Nestled in the vibrant area of Noel Street, Nottingham, this delightful three-bedroom flat is an ideal choice for students or working professionals seeking comfort and convenience. The property boasts a well-designed layout that maximises space, making it perfect for both study and relaxation.

The location of this flat is particularly advantageous, located right outside the tram stop within close proximity to local amenities, including shops, cafes, and public transport links. This makes commuting to the university and exploring the vibrant city of Nottingham a breeze. The lively surroundings offer a rich student experience, with plenty of opportunities for socialising and engaging in community activities.



Description

STUDENT LET - PROFESSIONALS - The semi detached three storey house is separated into three flats with three spacious bedrooms provide ample room for personalisation, ensuring that each resident can create their own sanctuary, shared kitchen and shower room.

This property is not just a place to live; it is a home where students can thrive academically and socially. With its appealing features and prime location, this flat is a fantastic opportunity for those looking to immerse themselves in student life in Nottingham. Don't miss the chance to make this charming flat your new home.

Transport Information

The tram stops right outside and will take you into Nottingham city center, University of Nottingham, QMC medical campus and Clifton campus. You can also walk into Nottingham Trent University as this is just a short walk away. The box stops a minutes walk away on Radford Road.

Hallway

As you enter the flat, you are greeted by a welcoming atmosphere that is both modern and functional. The hallway leads through to all the ground floor rooms.

Lounge 13'9" x 13'1" (4.21m x 4.00m)

Enjoy a large living space, ideal for socialising, relaxing, or studying with your flatmates with settees for relaxation.

Kitchen 8'8" x 8'2" (2.66m x 2.50m)

The kitchen features an electric fan assisted oven and four ring hob, fridge, oven, microwave, and washing machine, with plenty of storage for your cooking essentials.

Bedroom One 16'0" x 10'7" (4.88m x 3.24m)

A generous size double bedroom with bed, desk and chair, double wardrobe and chest of drawers.

Bedroom Two 16'0" x 8'1" (4.90m x 2.48m)

A double bedroom with bed, desk and chair, double wardrobe and chest of drawers, carpet.

Bedroom Three 11'8" x 11'9" (3.58m x 3.59m)

A double bedroom with bed, desk and chair, double wardrobe and chest of drawers.

Shower Room 8'8" x 3'1" (2.66m x 0.95m)

The shared shower room is well-appointed, catering to the needs of student life with practicality and ease, comprising of a corner shower cubicle, hand basin and wc, fully tiled walls and wall mirror.

Outside

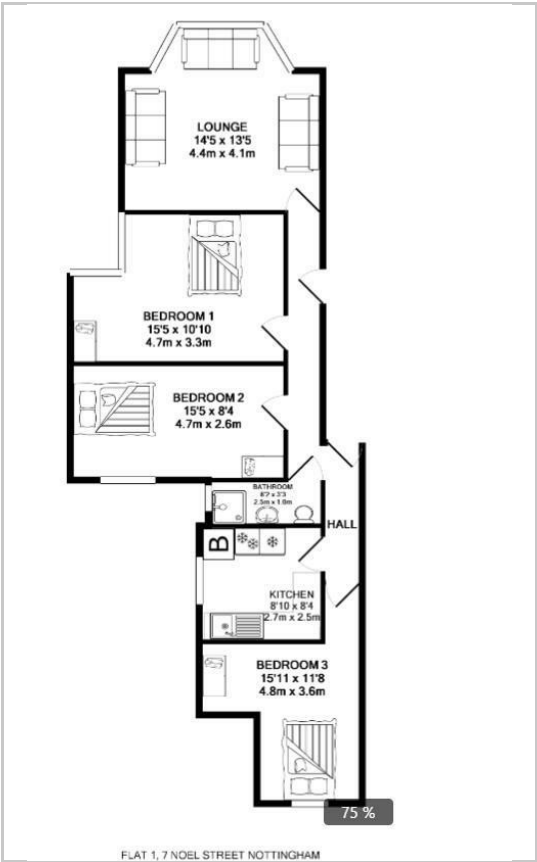
Disclaimer

1. MONEY LAUNDERING REGULATIONS: Intending purchasers will be asked to produce identification documentation at a later stage and we would ask for your co-operation in order that there will be no delay in agreeing the sale.
2. General: While we endeavour to make our sales particulars fair, accurate and reliable, they are only a general guide to the property and, accordingly, if there is any point which is of particular importance to you, please contact the office and we will be pleased to check the position for you, especially if you are contemplating travelling some distance to view the property.
3. Measurements: These approximate room sizes are only intended as general guidance. You must verify the dimensions carefully before ordering carpets or any built-in furniture.
4. Services: Please note we have not tested the services or any of the equipment or appliances in this property, accordingly we strongly advise prospective buyers to commission their own survey or service reports before finalising their offer to purchase.
5. THESE PARTICULARS ARE ISSUED IN GOOD FAITH BUT DO NOT CONSTITUTE REPRESENTATIONS OF FACT OR FORM PART OF ANY OFFER OR CONTRACT. THE MATTERS REFERRED TO IN THESE PARTICULARS SHOULD BE INDEPENDENTLY VERIFIED BY PROSPECTIVE BUYERS OR TENANTS. NEITHER Tetris UK Sales & Lettings Limited NOR ANY OF ITS EMPLOYEES OR AGENTS HAS ANY AUTHORITY TO MAKE OR GIVE ANY REPRESENTATION OR WARRANTY WHATEVER IN RELATION TO THIS PROPERTY.

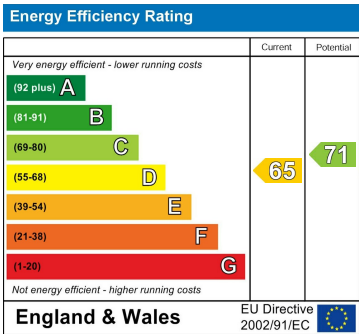
Area Map



Floor Plans



Energy Efficiency Graph



These particulars, whilst believed to be accurate are set out as a general outline only for guidance and do not constitute any part of an offer or contract. Intending purchasers should not rely on them as statements of representation of fact, but must satisfy themselves by inspection or otherwise as to their accuracy. No person in this firms employment has the authority to make or give any representation or warranty in respect of the property.