



Harlaxton Walk

, Nottingham, NG3 1AW

£105



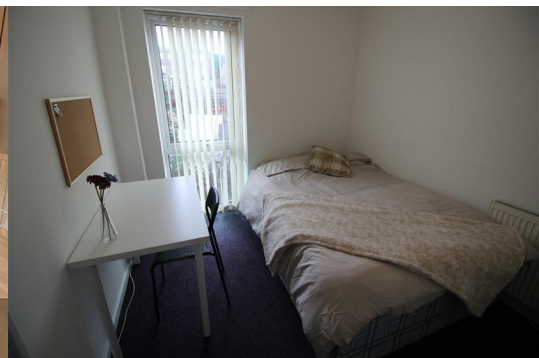
5 bed Student Let September 26 - July 27

£105 per person per week, inclusive of bills (WiFi, heating, electricity, water)

Spacious five bedroom property set over three floors with large enclosed rear garden within walking distance of the City Centre.

The ground floor consists of a kitchen with fully fitted wood effect wall and base units, electric oven and hob, washer / dryer, two fridge freezers and dishwasher. The lounge has a sofa, and table and chairs for 5 students. There is also a shower room with toilet and basin on this floor.

To the second floor, there are three of the five generous double bedrooms. All are fully furnished with double bed, double wardrobe, desk with chair. The third floor houses a large bathroom with bath and electric shower,



Description

This 5 bedroom, three story student let is available from September 26 - July 27 for 48 weeks inclusive of bills (WiFi, heating, electricity), situated within walking distance of the City Centre.

£105 pppw (£458.18pppcm) – inclusive of bills (WiFi, heating, electricity)

Hallway

The property has two front facing doors, one leading into the hallway and the other into the utility room. Carpet stairs leading to the first floor and a separate wc to the left of the hallway.

Lounge 12'11" x 9'8" (3.94m x 2.97m)

The lounge has a settee, table and five chairs, carpet, electric points, internet and patio doors leading into the rear garden.

Kitchen 9'4" x 8'4" (2.87m x 2.56m)

The kitchen comprises of wood effect wall and base units, washer / dryer, two fridge / freezers and dishwasher.

Ground Floor Shower Room 5'9" x 3'6" (1.77m x 1.08m)

A newly renovated ground floor shower room.

Bathroom 8'4" x 5'11" (2.56m x 1.82m)

The bathroom comprises of a white bath, wc and handbasin with electric over head shower and extractor.

First Floor

Bedrooms 1-3 are located on the first floor and they are all double bedrooms with a double bed, double wardrobe, desk with chair and notice board above.

Bedroom 1 9'10" x 8'5" (3.01m x 2.57m)

Comprising of a double bed, double wardrobe, desk and chair

Bedroom 2 11'5" x 8'4" (3.50m x 2.55m)

Comprising of a double bed, double wardrobe, desk and chair

Bedroom 3 12'5" x 6'8" (3.79m x 2.04m)

Comprising of a double bed, double wardrobe, desk and chair

Second Floor

Two double bedrooms are located on the second floor consisting of double beds, double wardrobe, desk with chair and notice board above.

Bedroom 4 12'4" x 8'5" (3.77m x 2.58m)

Comprising of a double bed, double wardrobe, desk and chair

Bedroom 5 12'4" x 9'10" (3.78m x 3.00m)

Comprising of a double bed, double wardrobe, desk and chair

Outside

To the front of the property there is a small garden enclosed by a wall with decorative railings. To the rear there is a considerable size rear garden fully enclosed with rear gate. Parking Permit available on application to Council

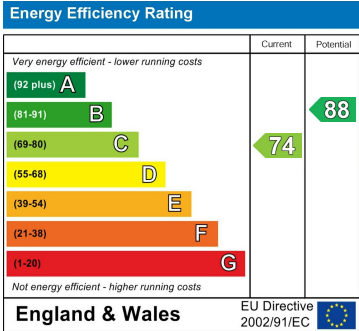
Area Map



Floor Plans



Energy Efficiency Graph



These particulars, whilst believed to be accurate are set out as a general outline only for guidance and do not constitute any part of an offer or contract. Intending purchasers should not rely on them as statements of representation of fact, but must satisfy themselves by inspection or otherwise as to their accuracy. No person in this firms employment has the authority to make or give any representation or warranty in respect of the property.