

## Haughton Hall Cottages

Haughton, Retford, DN22 8DG

Welcome to Haughton Hall Cottages in the picturesque village of Haughton, Retford. This quaint cottage is a beautiful house that offers a perfect blend of charm and comfort. Situated within a farm location, this house provides a tranquil escape from the hustle and bustle of city life.

The village of Haughton is a rural setting to enjoy being surrounded by the beauty of the English countryside. If you're taking a leisurely stroll Haughton offers a peaceful and idyllic setting for you to relax and unwind.

Don't miss this opportunity to own a piece of British heritage on the outskirts of Retford. Contact us today to arrange a viewing and experience the magic of Haughton Hall Cottages for yourself!

**£265,000**

# Haughton Hall Cottages

Haughton, Retford, DN22 8DG



- VACANT POSSESSION
- Kitchen / Utility
- Oil Central Heating
- Council Tax Band A - Freehold
- Rural Location
- Lounge
- Front & Rear Garden
- Three Bed Semi
- Dining Room
- EPC Grade E

## Description

### Lounge

14'9" x 11'11" (4.52m x 3.65m )

### Kitchen

### Utility

8'3" x 2'11" (2.52m x 0.90m)

### Dining Room

13'5" x 10'2" (4.09m x 3.12m )

### Bedroom One

11'11" x 9'11" (3.64m x 3.04m )

### Bedroom Two

12'8" x 8'9" ( 13'7" into recess)  
(3.87m x 2.67m ( 4.15m into  
recess))

### Bedroom Three

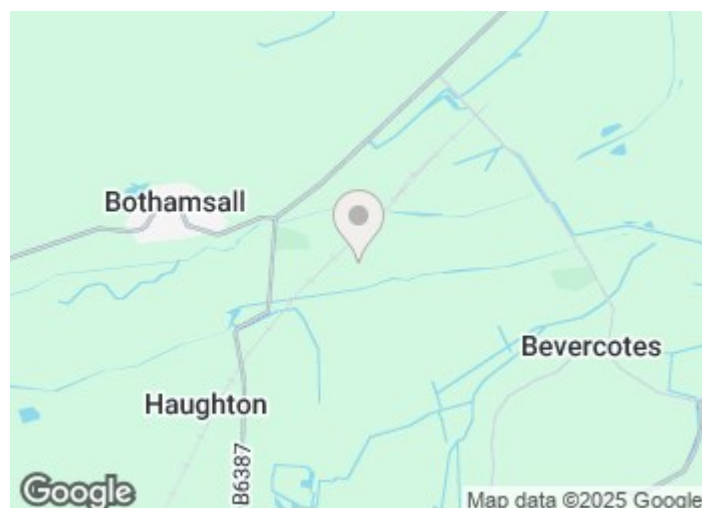
10'1" x 8'11" (3.08m x 2.72m )

### Family Bathroom

7'3" x 5'0" (2.21m x 1.54m )

### Outside

### Disclaimer



## Directions

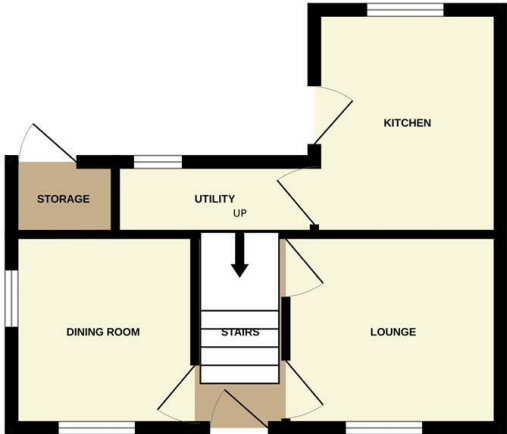




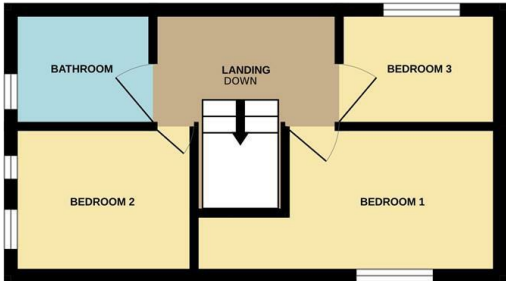


Floor Plan

GROUND FLOOR



1ST FLOOR



Whilst every attempt has been made to ensure the accuracy of the floorplan contained here, measurements of doors, windows, rooms and any other items are approximate and no responsibility is taken for any error, omission or mis-statement. This plan is for illustrative purposes only and should be used as such by any prospective purchaser. The services, systems and appliances shown have not been tested and no guarantee as to their operability or efficiency can be given.  
Made with Metropix ©2024

These particulars, whilst believed to be accurate are set out as a general outline only for guidance and do not constitute any part of an offer or contract. Intending purchasers should not rely on them as statements of representation of fact, but must satisfy themselves by inspection or otherwise as to their accuracy. No person in this firms employment has the authority to make or give any representation or warranty in respect of the property.

14-16 Eldon Street, Tuxford, NG22 0LH  
Tel: 01777 801 901 Email: dawn@clark-estates.co.uk www.clark-estates.co.uk

