



Haughton, Retford, DN22 8DG

£275,000



Welcome to Haughton Hall Cottages in the picturesque village of Haughton, Retford. This quaint cottage is a beautiful house that offers a perfect blend of charm and comfort. Situated within a farm location, this house provides a tranquil escape from the hustle and bustle of city life.

The village of Haughton is a rural setting to enjoy being surrounded by the beauty of the English countryside. If you're taking a leisurely stroll Haughton offers a peaceful and idyllic setting for you to relax and unwind.

Don't miss this opportunity to own a piece of British heritage on the outskirts of Retford. Contact us today to arrange a viewing and experience the magic of Haughton Hall Cottages for yourself!



Description

An unique opportunity to own a semi detached property located in a farming environment amongst a plot of just four three bedroom cottages. Each property can be bought individually, as a pair or all four if desired.

Lounge 12'7" x 11'1" (3.86m x 3.40m)

The lounge consists of a brick fire place with an open fire, stone hearth with storage either side of the chimney breast, under stair storage, carpet, central light and front facing Upvc window.

Kitchen 12'6" x 6'11" (3.83m x 2.12m)

The kitchen is open plan with the living room and includes part tiled walls, tiled floor, chrome chimney extractor, high gloss cream wall and base units, electric oven, electric hob, rear facing window and side upvc door leading to the garden.

Utility

The utility is open plan with the kitchen and has a quarry tiled floor and space for a fridge / freezer.

Dining Room 12'7" x 8'5" (3.86m x 2.57m)

The dining room has dual aspect upvc windows to the side and front elevation allowing natural light to flood the room, with an open fire with a brick fireplace, tiled hearth, carpet, coving to the ceiling and a central light.

Bedroom One 13'2" x 12'0" (4.03m x 3.66m)

Bedroom one is a double front facing room that includes a Dorma ceiling, carpet, radiator and central light.

Bedroom Two 13'6" x 13'2" (4.12m x 4.03m)

Bedroom two is a double room that consists of an original cast fire place, (not open) brick surround, carpet, radiator and side facing window.

Bedroom Three 10'4" x 8'10" (3.15m x 2.71m)

Bedroom three is a rear facing single room with a carpet, radiator and a Dorma ceiling.

Family Bathroom 7'1" x 5'1" (2.18m x 1.57m)

The family bathroom is a white three piece suite bathroom suite with a bath, sink, wc, electric shower, vinyl wood effect flooring, part tiled walls, radiator and side facing frosted window.

Outside

This plot has an extensive wrap around garden of a generous size, mainly laid to lawn with a hedge as the perimeter. There are brick built out houses attached to the property where the central heating boiler is located.

Disclaimer

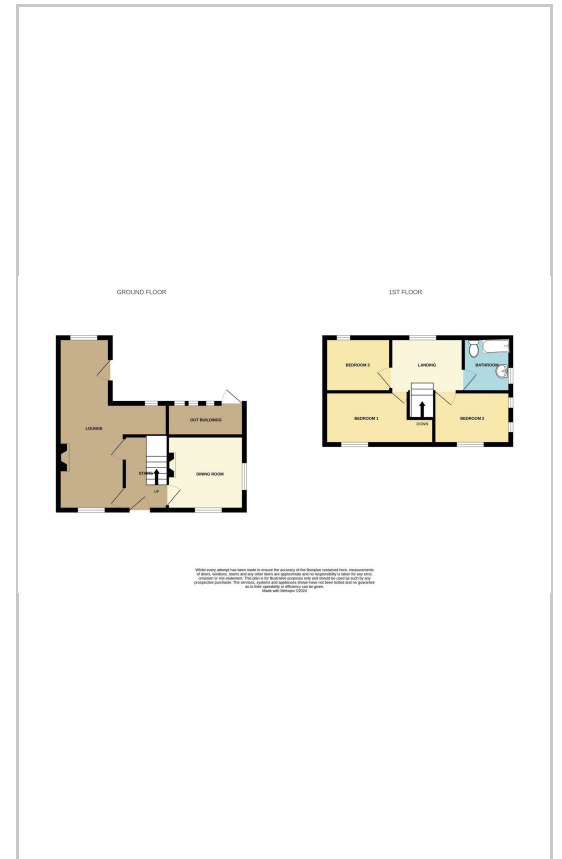
1. MONEY LAUNDERING REGULATIONS: Intending purchasers will be asked to produce identification documentation at a later stage and we would ask for your co-operation in order that there will be no delay in agreeing the sale.
2. General: While we endeavour to make our sales particulars fair, accurate and reliable, they are only a general guide to the property and, accordingly, if there is any point which is of particular importance to you, please contact the office and we will be pleased to check the position for you, especially if you are contemplating travelling some distance to view the property.
3. Measurements: These approximate room sizes are only intended as general guidance. You must verify the dimensions carefully before ordering carpets or any built-in furniture.
4. Services: Please note we have not tested the services or any of the equipment or appliances in this property, accordingly we strongly advise prospective buyers to commission their own survey or service reports before finalising their offer to purchase.
5. THESE PARTICULARS ARE ISSUED IN GOOD FAITH BUT DO NOT CONSTITUTE REPRESENTATIONS OF FACT OR FORM PART OF ANY OFFER OR CONTRACT. THE MATTERS REFERRED TO IN THESE PARTICULARS SHOULD BE INDEPENDENTLY VERIFIED BY PROSPECTIVE BUYERS OR TENANTS. NEITHER Clark Estates OR ANY OF ITS EMPLOYEES OR AGENTS HAS ANY AUTHORITY TO MAKE OR GIVE ANY REPRESENTATION OR WARRANTY WHATSOEVER IN RELATION TO THIS PROPERTY.

--

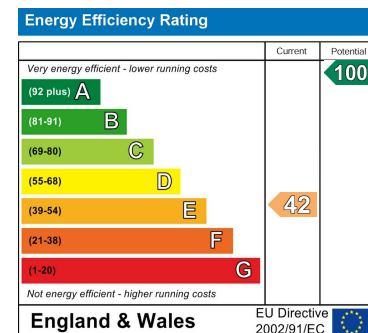
Area Map



Floor Plans



Energy Efficiency Graph



These particulars, whilst believed to be accurate are set out as a general outline only for guidance and do not constitute any part of an offer or contract. Intending purchasers should not rely on them as statements of representation of fact, but must satisfy themselves by inspection or otherwise as to their accuracy. No person in this firm's employment has the authority to make or give any representation or warranty in respect of the property.

16 Eldon Street, Tuxford, NG22 0LH

Tel: 01777 801 901 Email: dawn@clark-estates.co.uk www.clark-estates.co.uk