



Marnham Road

Tuxford, Newark, NG22 0PY

£88,000

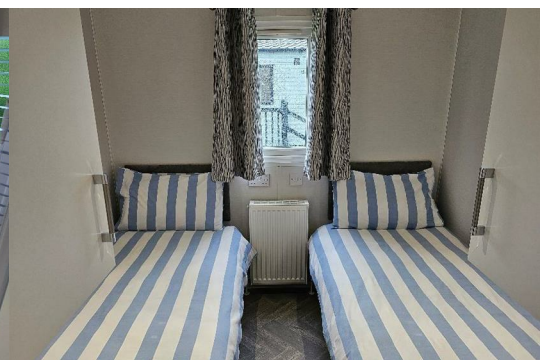
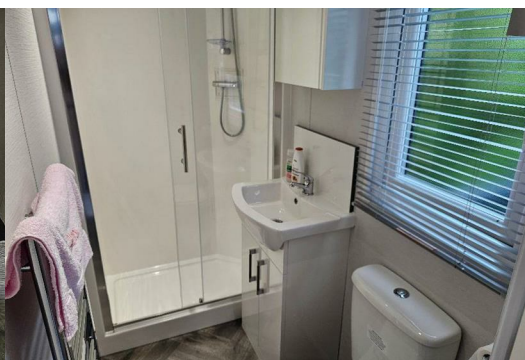


Welcome to this charming new park home located on Marnham Road in the delightful village of Tuxford, Newark. This property boasts a modern cosy reception room, perfect for relaxing or entertaining, with two lovely bedrooms, there is ample space for a couple.

Situated in a peaceful park home community, this property offers a tranquil lifestyle surrounded by nature. The new age of the property means you can enjoy all the modern conveniences and comforts without any of the hassle of an older home.

Don't miss the opportunity to make this new park home your own and enjoy the peaceful surroundings of Tuxford. Contact us today to arrange a viewing and take the first step towards your new home in this lovely village.

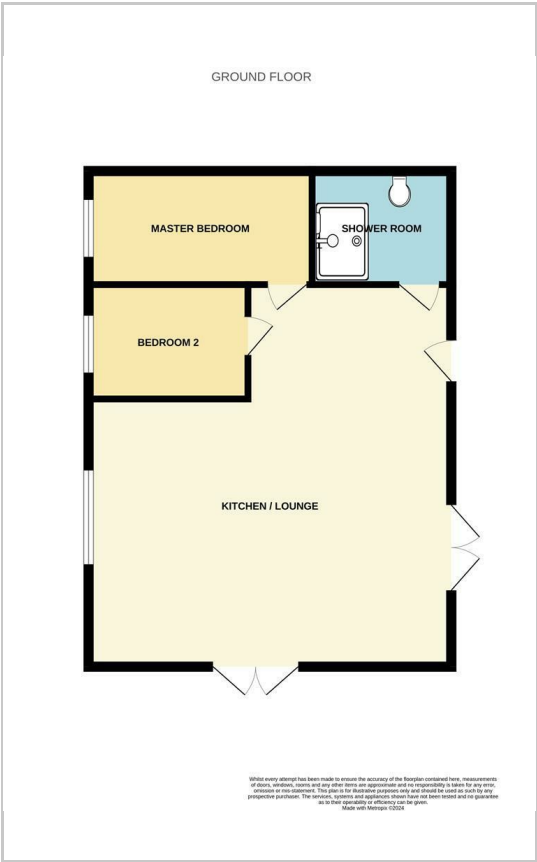
Site fees are payable. Call for up to date costs.



Area Map



Floor Plans



Energy Efficiency Graph

Energy Efficiency Rating		Current	Potential
<i>Very energy efficient - lower running costs</i>			
(92 plus) A			
(81-91) B			
(69-80) C			
(55-68) D			
(39-54) E			
(21-38) F			
(1-20) G			
<i>Not energy efficient - higher running costs</i>			
England & Wales		EU Directive 2002/91/EC	

These particulars, whilst believed to be accurate are set out as a general outline only for guidance and do not constitute any part of an offer or contract. Intending purchasers should not rely on them as statements of representation of fact, but must satisfy themselves by inspection or otherwise as to their accuracy. No person in this firm's employment has the authority to make or give any representation or warranty in respect of the property.