



29 Charles Street, Rugby

£318,500 Freehold

**Four Bedrooms • Driveway • Garage •
Detached Family Home • Spacious Open Plan
Living & Dining Room • Generous Garden •
Walking Distance to Town Centre**

4-bed detached house in prime location.

Convenient to town centre and playing fields. Ideal for family or as a retreat.

Book a viewing now!

Council Tax band: D

Tenure: Freehold

EPC Energy Efficiency Rating: D

EPC Environmental Impact Rating: D



- **Four Bedrooms**
- **Driveway**
- **Garage**
- **Detached Family Home**
- **Spacious Open Plan Living & Dining Room**
- **Generous Garden**
- **Walking Distance to Town Centre**



Charles Street is perfectly located within walking distance of Rugby town centre which offers a range of High Street stores and independent retailers, as well as a wide selection of bars, restaurants, and leisure facilities. Rugby train station is within walking distance and offers a frequent service to London Euston which takes just under 50 minutes. All major road networks are close by, including the M6, M1, A5 and A45.

Council Tax band: D

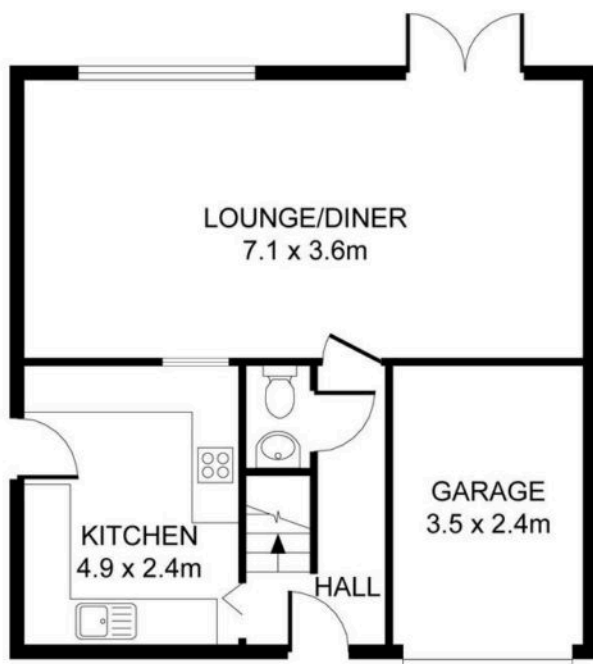
Tenure: Freehold

EPC Energy Efficiency Rating: D

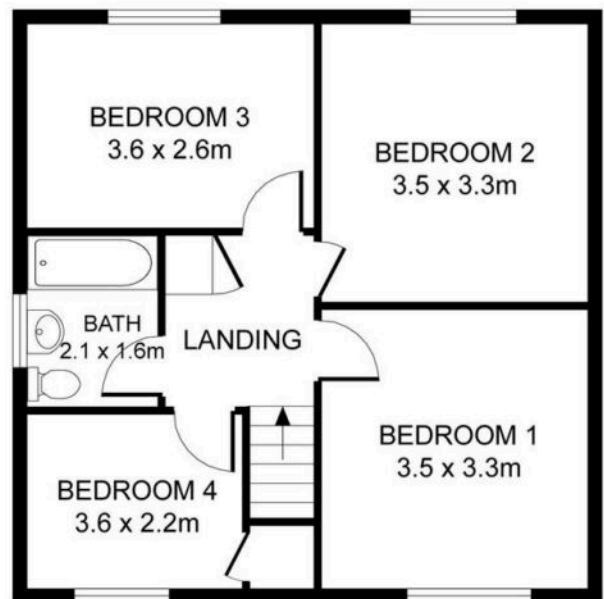
EPC Environmental Impact Rating: D







GROUND FLOOR



FIRST FLOOR

**PREMIUM
ESTATES**

WE DO WHAT OTHERS CAN'T