

# Holderr

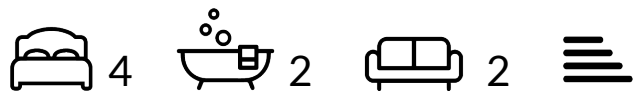
A Modern Estate Agent



## 19 Windmill View

Shepshed, Shepshed, LE12 9GW

£489,995



# 19 Windmill View

Shepshed, Shepshed, LE12 9GW

£489,995



The jewel in the crown of this four-bedroom detached family home is a huge open-plan kitchen/dining room that incorporates a snug, an island, and bi-fold doors to the garden. The Seacombe doesn't stop there. There's a separate living room, a utility room with outside access, three bathrooms, a dressing room to bedroom one, and a garage. This is a wonderful new home for all aspects of family life.

4 bedroom detached home

Open plan family/dining/snug with doors leading to the garden

Bedroom 1 with en suite and dressing room

Utility room





Road Map



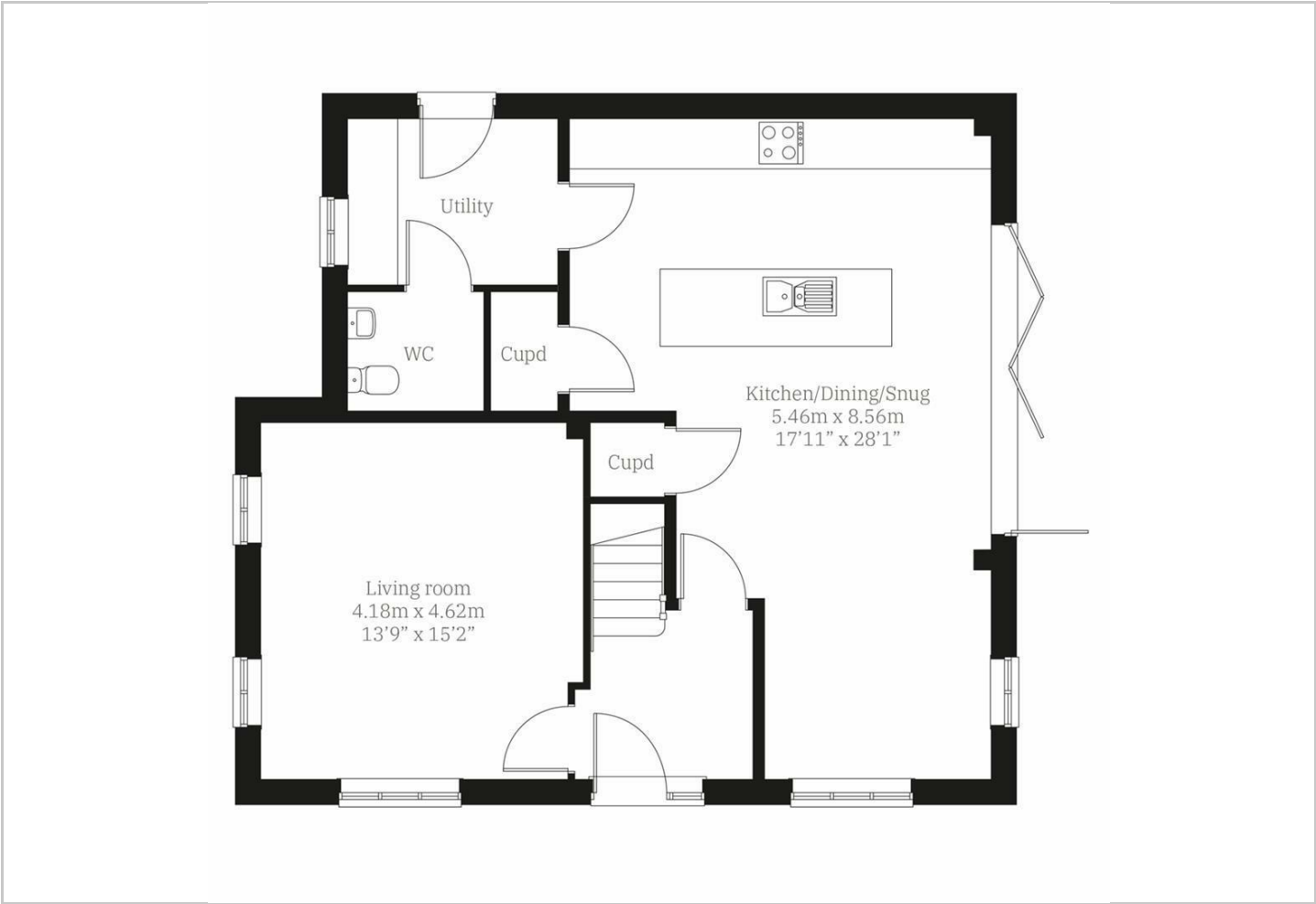
Hybrid Map



Terrain Map



Floor Plan



Viewing

Please contact our Holders - Loughborough Office on 01509 451100 if you wish to arrange a viewing appointment for this property or require further information.

Energy Efficiency Graph



These particulars, whilst believed to be accurate are set out as a general outline only for guidance and do not constitute any part of an offer or contract. Intending purchasers should not rely on them as statements of representation of fact, but must satisfy themselves by inspection or otherwise as to their accuracy. No person in this firms employment has the authority to make or give any representation or warranty in respect of the property.