

Holdings

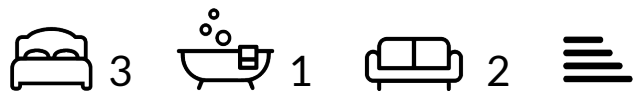
A Modern Estate Agent



26 Wolsey Way

Loughborough, Loughborough, LE11 1PR

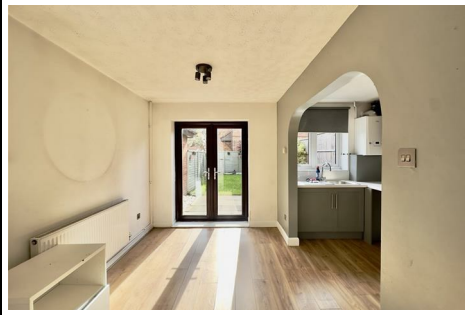
£230,000



26 Wolsey Way

Loughborough, Loughborough, LE11 1PR

£230,000



Lounge 4.45m (14'7) x 3.29m (10'10)

A sizeable and warm living space, opening on to the dining area.

Dining Area 3.21m (10'6) x 2.42m (7'11)

A bright dining space, open to the kitchen. French doors allow in plentiful light to the space. There is also a useful under stairs storage cupboard.

Kitchen 3.21m (10'6) x 1.8m (5'11)

A contemporary kitchen open to the dining area. Includes a fridge/freezer, oven and hob with plumbing space for a washing machine / dishwasher.

Master Bedroom 3.58m (11'9) x 2.57m (8'5)

Spanning the width of the property and over looking the front.

Bedroom Two 3.19m (10'6) x 2.12m (6'11)

A second bedroom over looking the rear garden.

Bedroom Three / Study 2.14m (7'0) x 2.1m (6'11)

A third bedroom also over looking the rear garden.

Bathroom 2.37m (7'9) x 1.9m (6'3)

A smart three piece bathroom including a bath, sink, toilet and overhead shower above the bath.

Garden

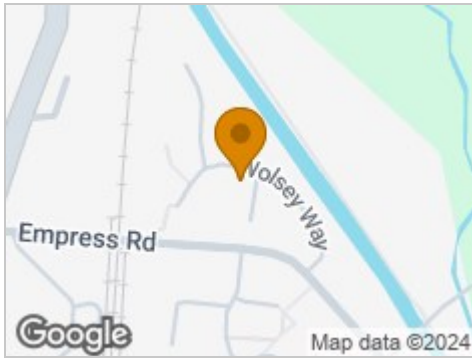
A private garden that is complete with a patio area and lawn space.

Parking

Off-road parking available leading to a garage providing extra parking or storage space!



Road Map



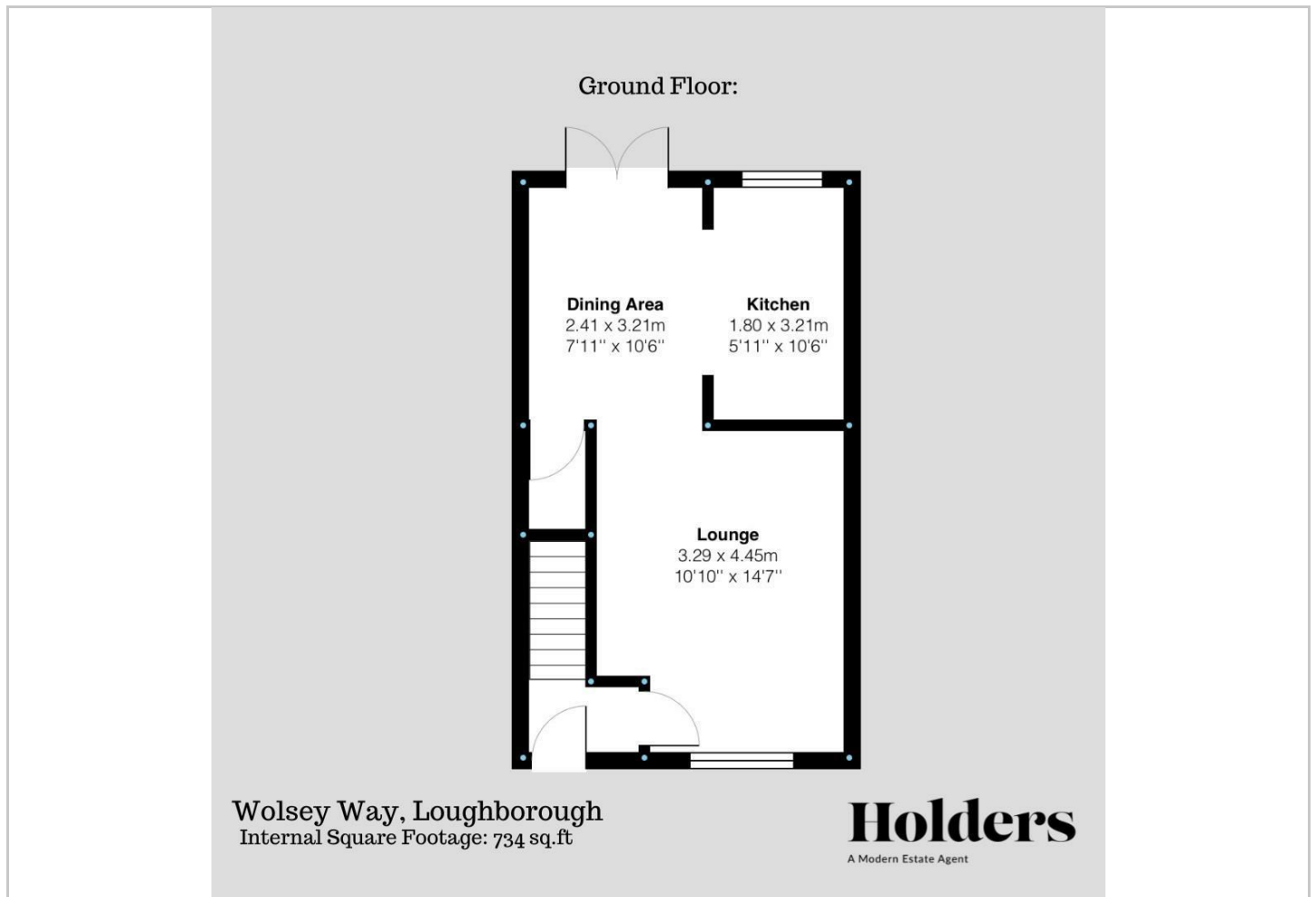
Hybrid Map



Terrain Map



Floor Plan



Viewing

Please contact our Holdings - Loughborough Office on 01509 451100 if you wish to arrange a viewing appointment for this property or require further information.

Energy Efficiency Graph



These particulars, whilst believed to be accurate are set out as a general outline only for guidance and do not constitute any part of an offer or contract. Intending purchasers should not rely on them as statements of representation of fact, but must satisfy themselves by inspection or otherwise as to their accuracy. No person in this firm's employment has the authority to make or give any representation or warranty in respect of the property.