

Holdings

A Modern Estate Agent



6 Maytree Lane

Woodhouse, Loughborough, LE12 8UQ

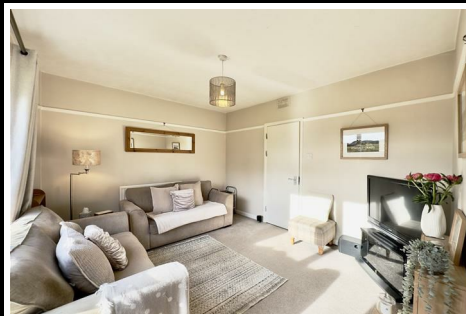
Offers over £280,000



6 Maytree Lane

Woodhouse, Loughborough, LE12 8UQ

Offers over £280,000



The property comprises of entrance porch, hallway, Lounge with patio doors into the rear garden, Dining room, Kitchen, leading into the utility room, with plumbing for a washing machine, tumble dryer, storage cupboard and back door access onto the garden.

The first floor gives way to the master bedroom and a further double sized bedroom complete with fitted storage and open views beyond. again with fitted storage, Completing this floor is a modern bathroom and a w/c.

The rear garden offer a fully enclosed, private outdoor space and is of a great size making a great space to enjoy the summer months in! The property also benefits from a single garage and off road parking.



Road Map



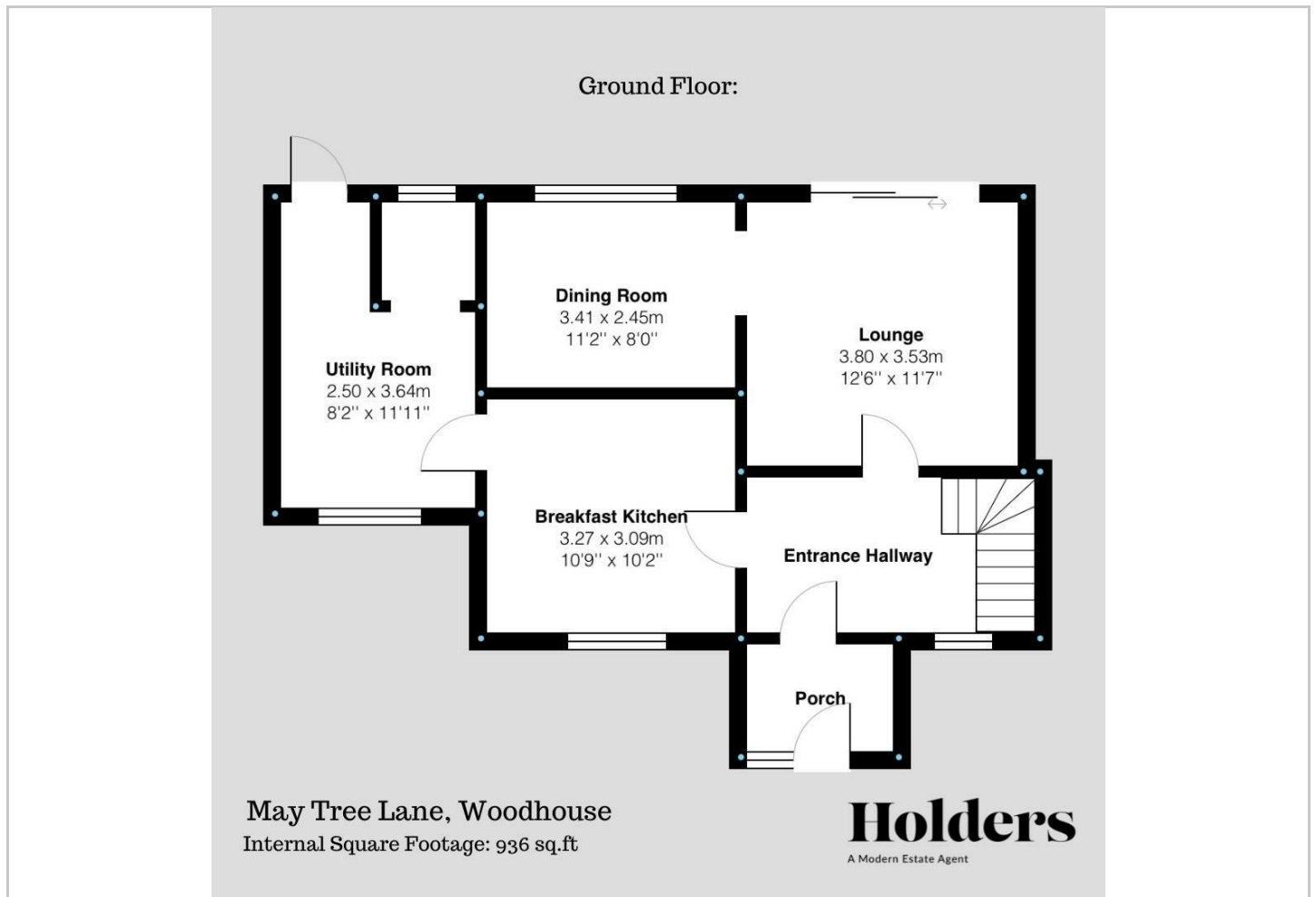
Hybrid Map



Terrain Map



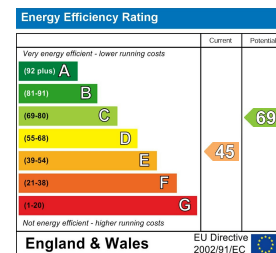
Floor Plan



Viewing

Please contact our Holders - Loughborough Office on 01509 451100 if you wish to arrange a viewing appointment for this property or require further information.

Energy Efficiency Graph



These particulars, whilst believed to be accurate are set out as a general outline only for guidance and do not constitute any part of an offer or contract. Intending purchasers should not rely on them as statements of representation of fact, but must satisfy themselves by inspection or otherwise as to their accuracy. No person in this firm's employment has the authority to make or give any representation or warranty in respect of the property.