



Toby Gullick
INDEPENDENT PROPERTY SPECIALIST

Twyford S021

Guide Price £850,000

5 2 1

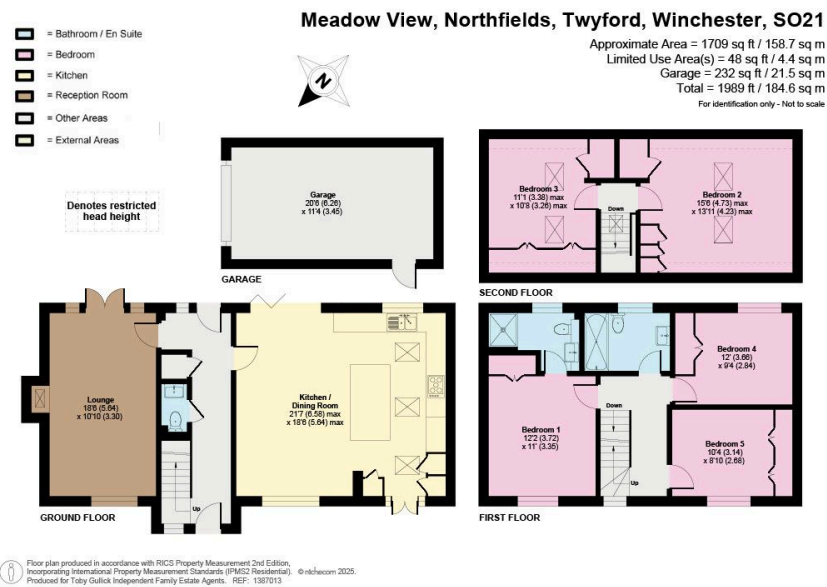


A PICTURE PERFECT FIVE BEDROOM DETACHED COTTAGE STYLE RESIDENCE IN THE DESIRABLE VILLAGE OF TWYFORD

Set within picturesque rolling countryside and positioned in the highly sought-after village of Twyford, this exquisite five-bedroom cottage-style home offers true visual charm and refined elegance throughout.

Beautifully arranged over three graceful floors, and offering 1989 sq. ft of accommodation, the property combines timeless character with high-end finishes, ideal for anyone seeking sophistication, style, and exceptionally well-designed living spaces. The home also sits within excellent school catchment, including Twyford St Mary's Primary, Westgate Secondary, and Twyford Prep School. Upon entering, you are welcomed into a polished and pristine entrance hall, where stylish tiled flooring and a refined aesthetic set the tone for the rest of the home. From here, a light-filled sitting room awaits, complete with handsome oak flooring, a cosy log burner, and patio doors that open effortlessly onto the attractive rear garden. The expansive and superb kitchen/dining room forms the true heart of this home, an impressive, beautifully lit space enhanced by a trio of Velux windows that bathe the room in natural warmth and brightness throughout the year. A wealth of elegant cabinetry, integrated appliances, a classic butler's sink, and a generous central island with bar seating create an exceptional culinary environment. Porcelain tiles flow through to a spacious dining area, where bifold doors open seamlessly to the garden, making this an outstanding setting for hosting parties and entertaining family. A convenient ground-floor WC and practical store cupboard complete this level. The first floor continues to impress with a selection of well-proportioned, desirable double bedrooms, each with their own decorative charm and enchanting countryside views. The delightful principal bedroom benefits from fitted storage and a stylish en-suite shower room, while a contemporary family bathroom serves the remaining rooms. The second floor is equally impressive, offering two generously sized double bedrooms, both immaculately presented and filled with natural light from dual Velux windows. Outside, the property enjoys a charming front garden, mainly laid to lawn and wonderfully private thanks to ornate beech hedging that wraps attractively around the home. To the rear, a driveway provides parking for multiple vehicles alongside a single garage. The private rear garden features a spacious terrace is an ideal spot for outdoor dining and entertaining.





- A Picture Perfect Detached Cottage Style Residence
- Five Attractive Double Bedrooms
- Stylish And Contemporary Family Bathroom And Ensuite Shower Room
- Immaculately Presented Living Spaces
- A Superb And Expansive Kitchen/Dining Room
- Light Filled Sitting Room With Log Burner
- Garage And Off Road Parking
- Private And Secluded Pretty Front And Rear Gardens
- Boasts 1989 Sq. Ft / Solar Roof Panels
- Twyford St Mary's Primary School, Westgate Secondary School And Twyford Prep School Catchment

