



Cornercroft Barn  
Hacket Lane | Thornbury | Bristol | Gloucestershire | BS35 2HH









# STEP INSIDE

## Cornercroft Barn

Located on the outskirts of vibrant Thornbury, with country walks quite literally on the doorstep, Crossways Primary School within walking distance, and the A38 at Grovesend close by for effortless commuting.

Thornbury itself is a thriving market town with excellent local amenities including a bustling High Street, leisure centre, golf course, and a range of schools including the well-regarded Castle School. With easy access to the M4/M5 motorways and Bristol Parkway Station, commuting to Bristol, South Wales or London is a breeze.

### Step inside:

Step through the front door and you'll be welcomed by a beautifully appointed kitchen/dining room—a generous space featuring stylish fitted units, integrated appliances, tiled flooring, and a stable door to the outside. Whether entertaining or enjoying a quiet breakfast, this room is the heart of the home. Adjacent lies a separate utility area and a ground floor family bathroom, along with a spacious double bedroom boasting a skylight and window to the front, ideal for guests or single-level living.

The cosy lounge features twin windows to the front, while the snug/study with French doors to the garden offers a peaceful retreat or an ideal work-from-home setup. Upstairs, two further double bedrooms await—one with striking floor-to-ceiling glazing and a Juliette balcony. Both share a modern shower room and enjoy the quirky feature of the original barn hayloft door—now a unique window with a view and a nod to the property's heritage

- Charming detached barn conversion set in a peaceful lane of character homes
- Spacious kitchen/dining room with integrated appliances, tiled floors, and stable door
- Three double bedrooms, including a ground floor option and stunning features upstairs
- Versatile living spaces with cosy lounge and separate snug/study with garden access
- Wraparound gardens and off-street parking for two cars
- Prime location on the edge of Thornbury with country walks, schools, and commuter links nearby















# STEP OUTSIDE

## Cornercroft Barn

---

Outside, the gardens wrap around the front and side, landscaped with lawn and bordered with shrubs and flowering plants. A recently planted hedge provides privacy from the lane, while off-street parking for two cars, gas central heating, and double glazing add practical benefits to this characterful home. Whether you're seeking a charming country retreat, a stylish family home, or a characterful downsize, this barn conversion offers versatile living with a truly unique flair.

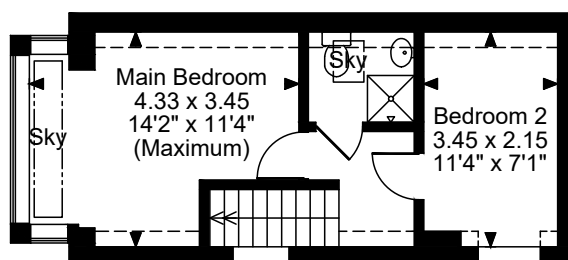
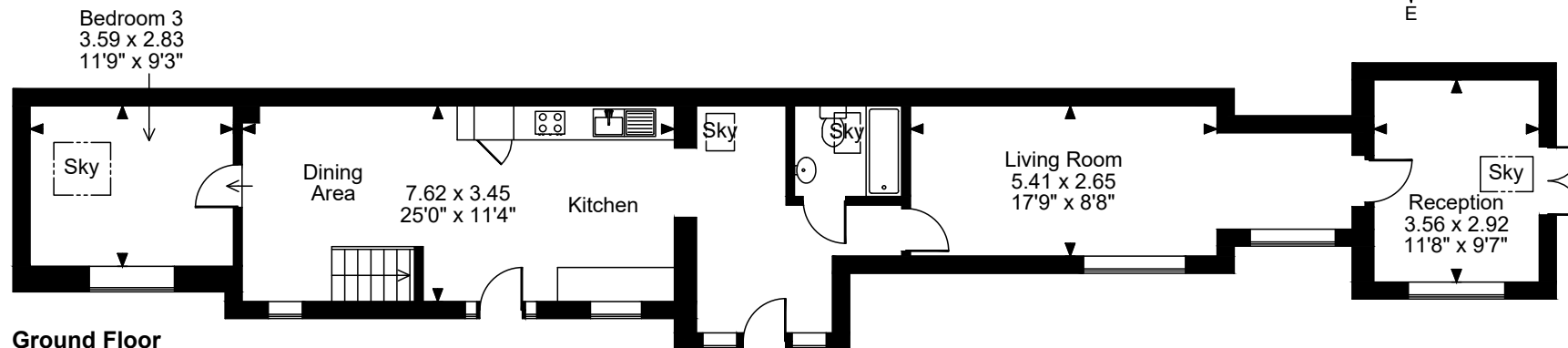
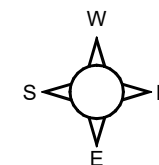
### Directions:

What3Words:///shock.broadens.cabinets





**Cornercroft Barn Hacket Lane, Thornbury, Bristol**  
**Approximate Gross Internal Area**  
**1135 Sq Ft/105 Sq M**



**First Floor**

**FOR ILLUSTRATIVE PURPOSES ONLY - NOT TO SCALE**

The position & size of doors, windows, appliances and other features are approximate only.

□ □ □ Denotes restricted head height

© ehouse. Unauthorised reproduction prohibited. Drawing ref. dig/8645652/MSZ

Council Tax Band: E  
 Tenure: Freehold



Agents notes: All measurements are approximate and for general guidance only and whilst every attempt has been made to ensure accuracy, they must not be relied on. The fixtures, fittings and appliances referred to have not been tested and therefore no guarantee can be given that they are in working order. Internal photographs are reproduced for general information and it must not be inferred that any item shown is included with the property. For a free valuation, contact the numbers listed on the brochure. Copyright © 2025 Fine & Country Ltd. Registered in England & Wales. Company No: 9165140. Registered Office Address: 30 High Street, Chepstow, Gwent, NP16 5LJ. Printed



follow Fine & Country Almondsbury on



Fine & Country Almondsbury  
30 High Street, Chepstow, Monmouthshire, NP16 5LJ  
01291 629799 | [chepstow@fineandcountry.com](mailto:chepstow@fineandcountry.com)

