



Crossways Chapel
Crossways Lane | Thornbury | Bristol | Gloucestershire | BS35 3UE

STEP INSIDE

Crossways Chapel

Upon entering, you are greeted by a spacious and thoughtfully designed kitchen, complete with wooden cabinetry and an original stone wall that pays homage to the building's rich history. French doors lead seamlessly to a private garden, creating an effortless connection between indoor and outdoor spaces.

Through a striking stone archway, you step into the cosy heart of the home—the living room. This inviting space features a statement fireplace, charming stonework, and warm ambient lighting, making it the perfect retreat on a winter's day. A beautifully preserved wooden pew remains as a treasured nod to the chapel's storied past. A convenient downstairs WC completes the ground floor.

Upstairs, three double bedrooms each boast their own unique charm, with slanted ceilings, skylight windows, and exposed stone detailing. The principal bedroom is a true highlight, with double doors opening to breathtaking countryside views, filling the room with natural light and serenity. A flume from the living room fireplace provides an additional and efficient heating source. A well-appointed family bathroom completes this level.











STEP OUTSIDE

Crossways Chapel

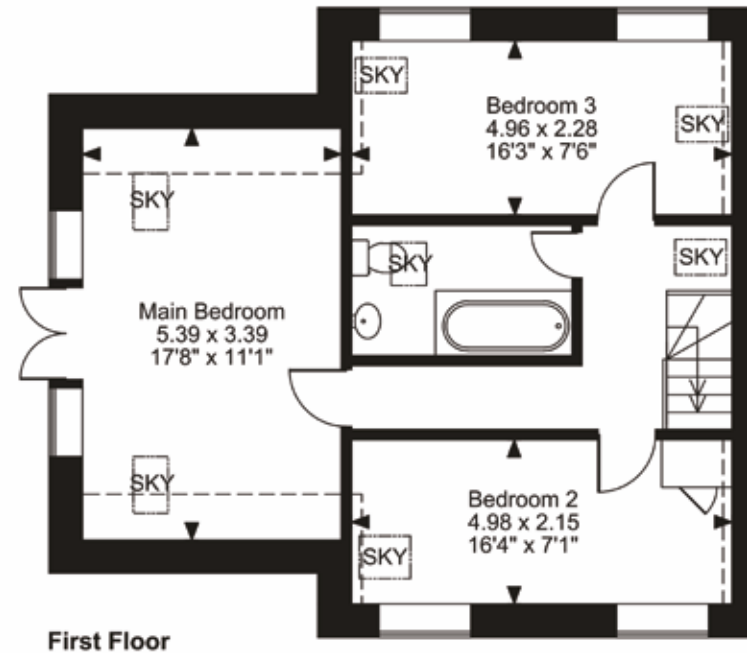
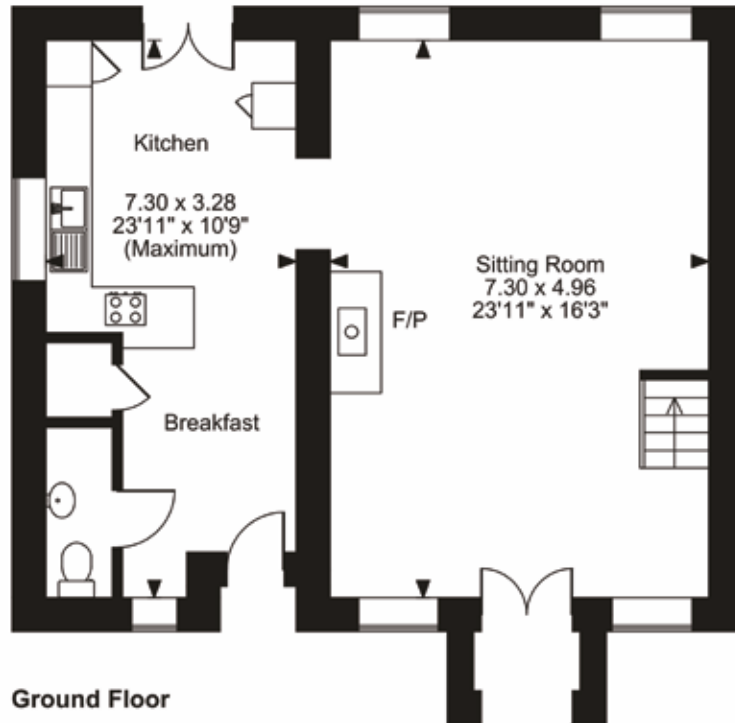
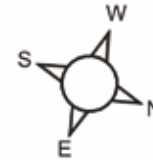
The property benefits from a private, fenced garden—an ideal space for relaxation or entertaining. A rolling panel within the garden offers the potential for additional vehicle storage. Off-road parking and immediate access to scenic country walks make this home perfect for nature lovers and dog owners alike.

Directions:

What3Words:///plantings.bunch.relay



Crossways Chapel, Crossways Lane, Thornbury, Bristol
Approximate Gross Internal Area
1206 Sq Ft/112 Sq M



Council Tax Band: C
 Tenure: Freehold

FOR ILLUSTRATIVE PURPOSES ONLY - NOT TO SCALE
 The position & size of doors, windows, appliances and other features are approximate only.
 [---] Denotes restricted head height
 © ehouse. Unauthorised reproduction prohibited. Drawing ref. dig/8636581/DMS



Fine & Country Newport
Merlin House, Langstone, Newport, NP18 2HJ
01633 927 277 | newport@fineandcountry.com

