



Wright Marshall  
Estate Agents

31 ALVANLEY RISE, LEFTWICH, NORTHWICH  
CW9 8AY

OFFERS IN THE REGION OF £365,000





An extended corner plot family home positioned at the end of a cul-de-sac located within walking distance to the highly regarded County High School Leftwich

## Description

Purchased by the vendor over 20 years ago this large property has been extended and maintained throughout to create a light and airy family home perfectly positioned at the end of a cul-de-sac.

Particular mention must be made of the extension to the side elevation creating a sitting room and study with direct access to the side garden, which could easily be converted into a self contained annex for a teenager or elderly relative.

Externally a large double driveway for two large vehicles can be found to the front aspect. A secret greenhouse/potting shed can be found to the side aspect followed by the beautifully landscaped private and enclosed East facing rear garden.

Ground floor accommodation comprises spacious porch with two double glazed windows to the front aspect. The hallway has a large understairs storage cupboard and stairs to the first floor. The kitchen has a range of low level and eye level units, a sink with drainer, a large double glazed window to the rear aspect and space for a fridge and separate freezer. The utility room houses the wall mounted combi boiler and has space for a washing machine, family sized dishwasher and tumble dryer. The rear garden and integral garage are both accessible via the utility room, perfect for further appliances and general storage. The large dual aspect lounge/dining room with laminate flooring and a gas fire measures over 22 ft by 11ft with a large double glazed window to the front aspect and sliding doors to the rear aspect flooding the room with natural light. A set of French doors connects the lounge/dining room to the cosy sitting room with a double glazed window to the front aspect and sliding doors to the side garden. The study is also a very bright room with two double glazed windows and a door to the side garden.

First floor accommodation comprises two double bedrooms, both with double glazed windows and built in storage cupboards, a three piece family bathroom with a frosted double glazed window to the rear aspect, two single bedrooms both with double glazed windows and access to the partly boarded loft space.

Leftwich is conveniently located to the A556 connecting commuters to both the M56 and M6 motorways.

Regular bus routes include the London Road stop (Crewe-Northwich) which runs every 30 minutes, ideal for interested parties who don't drive.

Local rail networks include Greenbank train station (Chester-Manchester line) and Hartford train station (Liverpool-London line) both of which are only a 10 minute drive away from the property.

Northwich and surrounds are renowned for it's superb educational facilities. Catering for all age groups, including the highly reputable and very popular Kingsmead Primary School, Grange School (junior and secondary school level), St Nicolas's Roman Catholic high school, Mid-Cheshire College

of Further Education, County High School Leftwich and Sir John Deane's Sixth Form and further education college which is within a short walk of the property.

Northwich town centre has a range of independent and established retail chains. There are several supermarkets including Sainsburys, Tesco and Waitrose. The town is currently being re developed and a brand new cinema and restaurant complex known as Barons Quay and a leisure complex known as Brio leisure have recently been built providing an Olympic sized indoor swimming pool, state of the art gymnasium and theatre.

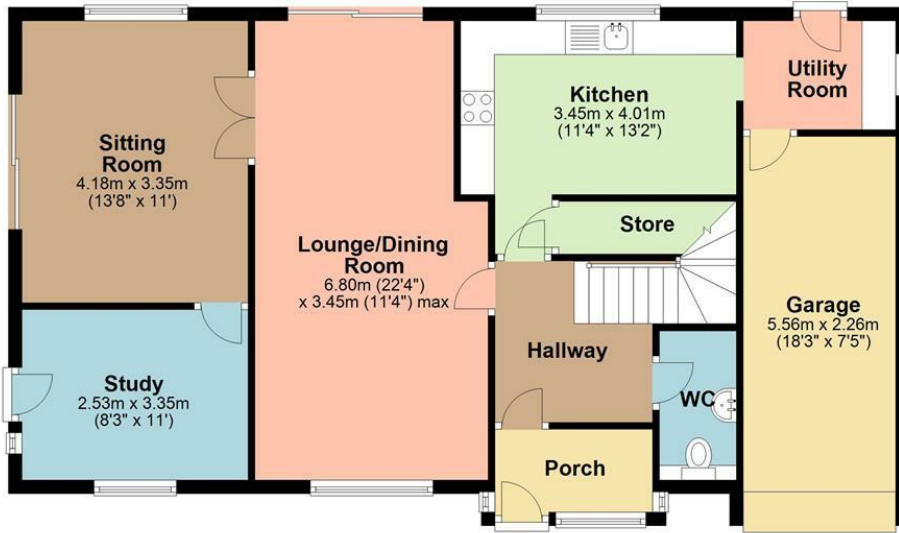






## Ground Floor

Approx. 90.2 sq. metres (970.7 sq. feet)



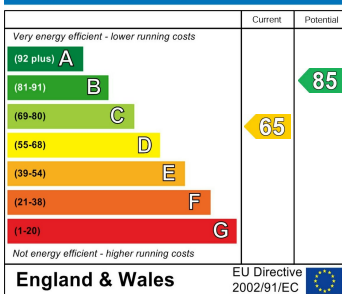
## First Floor

Approx. 47.7 sq. metres (513.7 sq. feet)

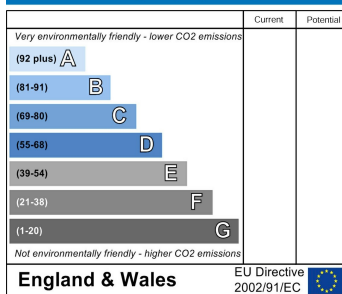


Total area: approx. 137.9 sq. metres (1484.4 sq. feet)

### Energy Efficiency Rating



### Environmental Impact (CO<sub>2</sub>) Rating



**Wright Marshall**  
Estate Agents



**RICS**

the mark of  
property  
professionalism  
worldwide

**rightmove**

4 The Bull Ring  
Northwich  
Cheshire  
CW9 5BS

[www.wrightmarshall.co.uk](http://www.wrightmarshall.co.uk)  
T. 01606 41318

Agents Note: Whilst every care has been taken to prepare these sales particulars, they are for guidance purposes only. All measurements are approximate and are for general guidance purposes only and whilst every care has been taken to ensure their accuracy, they should not be relied upon and potential buyers are advised to recheck the measurements