

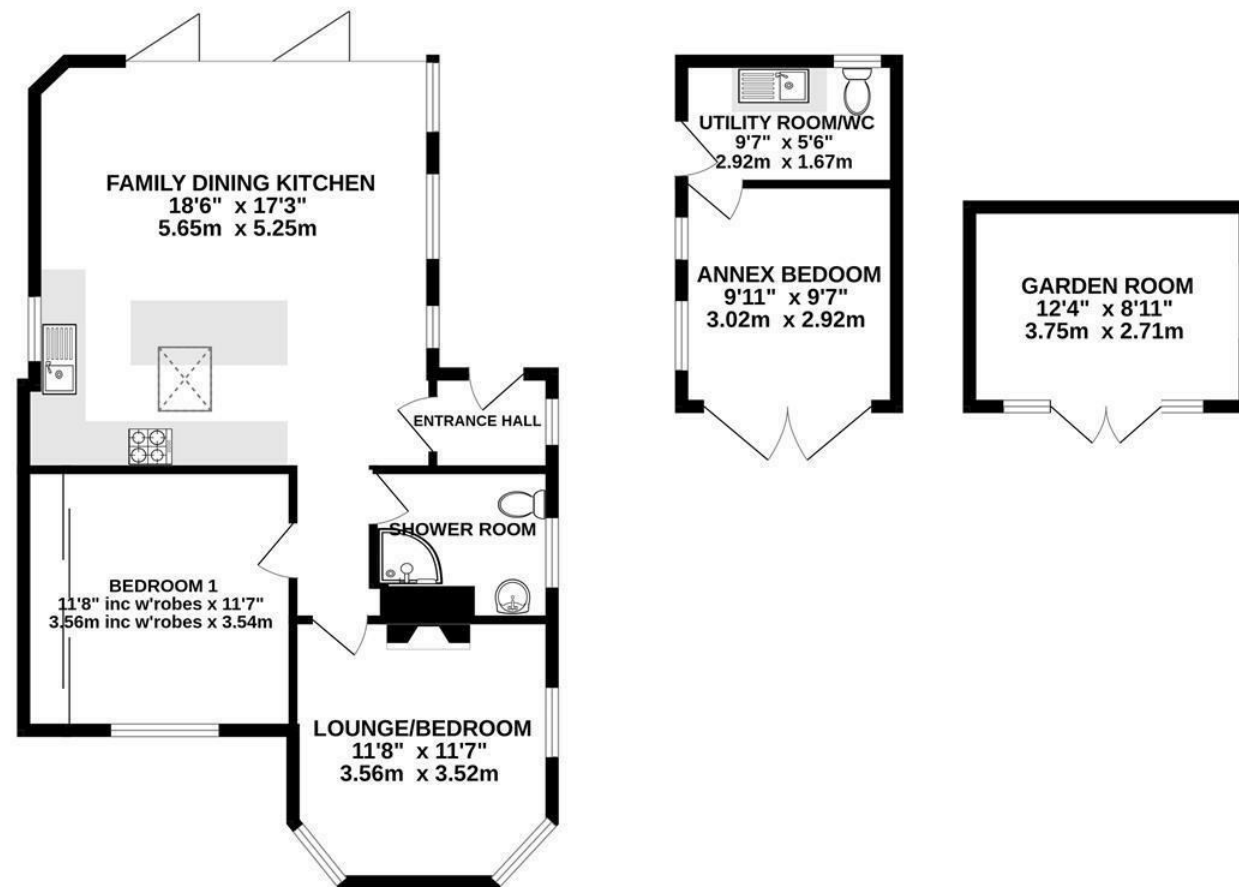


Wright Marshall
Estate Agents

26 NORTHWICH ROAD, KNUTSFORD WA16 0AN

£2,000 PER MONTH

940 sq.ft. (87.3 sq.m.) approx.



TOTAL FLOOR AREA : 940 sq.ft. (87.3 sq.m.) approx.

Whilst every attempt has been made to ensure the accuracy of the floorplan contained here, measurements of doors, windows, rooms and any other items are approximate and no responsibility is taken for any error, omission or mis-statement. This plan is for illustrative purposes only and should be used as such by any prospective purchaser. The services, systems and appliances shown have not been tested and no guarantee as to their operability or efficiency can be given.
Made with Metropix ©2024



MISREPRESENTATION ACT 1967.

Messrs Wright Marshall for themselves and for the vendors or Lessors of this property, whose agents they are, give notice that:

1. The particulars are set out as general outline only for the guidance of intending purchasers, and do not constitute, nor constitute part of, an offer or contract.
2. All descriptions and references to condition and necessary permissions for use and occupation, and other details are given in good faith and are believed to be correct but any intending purchasers or tenants should not rely on them as statements or representations of fact but must satisfy themselves by inspection or otherwise as to the correctness of each of them.
3. No person in the employment of Messrs. Wright Marshall has any authority to make any representation whatever in relation to this property.



56 High Street, Nantwich, Cheshire, CW5 5BB
T. 01270 625410 | | www.wrightmarshall.co.uk

Buxton | Chester | Crewe | Knutsford | Nantwich | Northwich | Tarporley

This charming late-1700s cottage on Northwich Road effortlessly combines historic character with modern functionality. The bay-fronted design makes an instant impression, inviting a closer look at the home's unique design.

DESCRIPTION

Upon entering, you're welcomed by a charming vestibule that flows into the main reception room, where traditional elegance meets contemporary style. The kitchen serves as the heart of the home, featuring a substantial central island, a full suite of modern appliances, and a convenient Quooker tap. The lounge area impresses with a partially vaulted ceiling and expansive 4-meter bi-fold doors that open onto a covered patio, perfect for entertaining year-round.

The property includes two generously sized double bedrooms. The primary bedroom offers a wall of custom-fitted wardrobes and includes a discreet extractor fan. The second bedroom exudes a cozy ambiance with a classic cast-iron fireplace and is currently arranged as a winter snug, providing a versatile retreat adaptable to all seasons. A luxurious three-piece shower room is situated to serve both bedrooms.

Outside, the grounds are equally impressive. A newly installed, modern double-gated entrance leads to a spacious gravel driveway. The low-maintenance garden is designed for relaxation and gatherings, featuring a covered dining area, a fully powered wooden summer house, and a tranquil pond with a water feature. An 8 x 6 shed also provides useful storage space.

With its thoughtful layout, blend of historical charm, and modern amenities, this property offers a rare combination of character and convenience, making it a must-see for those seeking a truly unique home.