



Wright Marshall
Estate Agents

13 Dixon Court, Macclesfield, SK11 9AU



£975 PCM

1 Princess Street, Knutsford, Cheshire, WA16 6BY
T. 01565 621624
Knutsford@wrightmarshall.co.uk /
Cheshirelettings@wrightmarshall.co.uk



Dixon Court is a well-presented, fully furnished two-bedroom apartment occupying the first floor of a contemporary 2005 development in the heart of Chelford village, just steps from the train station.

Available Mid January 2026

Council Tax Band - C

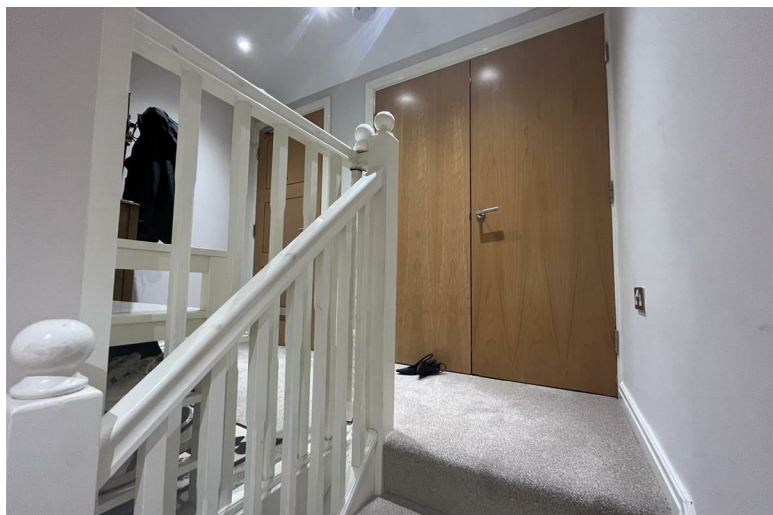
EPC Rating - B

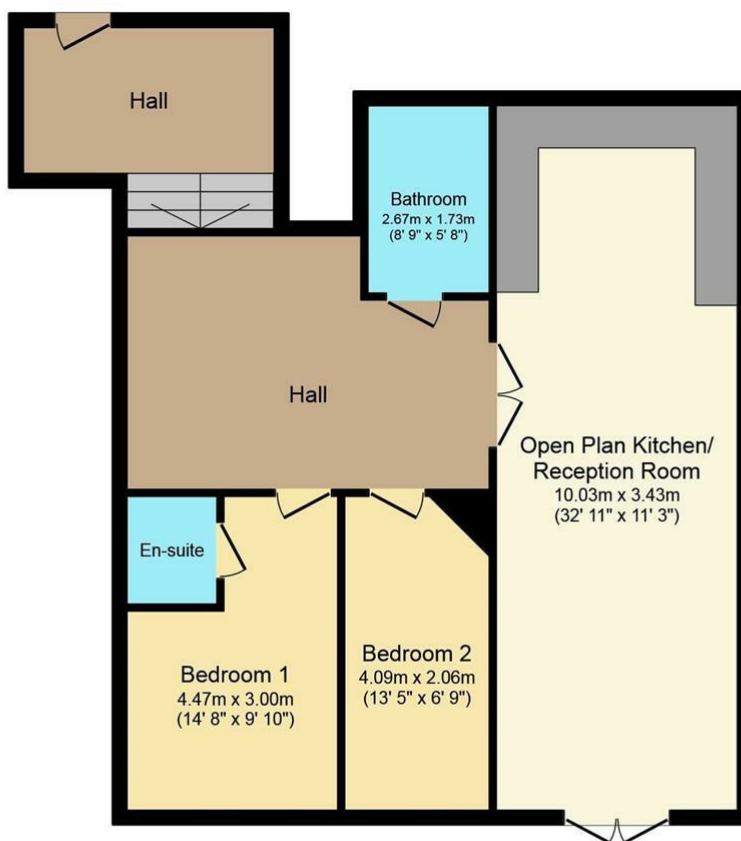
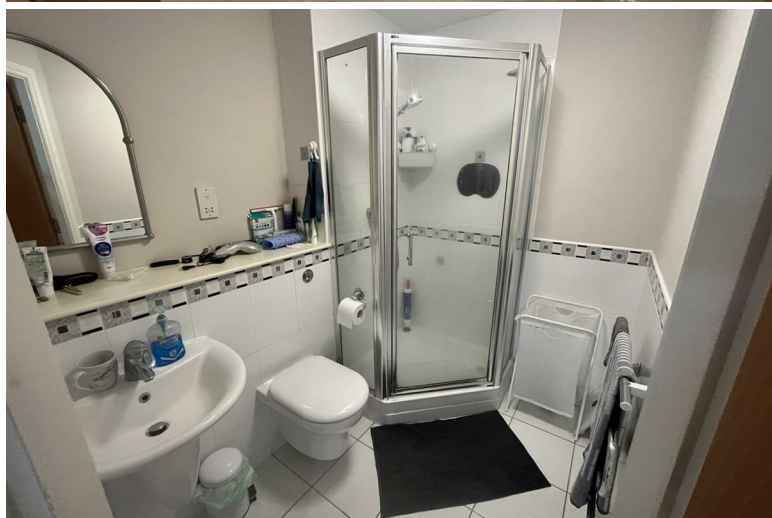
Description

Accessed from the rear of the building, the apartment offers generous, well-planned accommodation. A spacious central hallway leads to all principal rooms, including an impressive open-plan, fully equipped kitchen, dining and living area. There are two double bedrooms, a private en-suite shower room to the principal bedroom, and a modern family bathroom with a shower over the bath. Additional features include one secure allocated off-road parking space and a peaceful semi-rural outlook, while still benefiting from excellent village amenities.

Location

Chelford is a charming village offering lovely local walks, the renowned Egerton Arms pub, and a selection of shops for everyday needs, including Chelford Farm Supplies and Boons butchers. The nearby centres of Alderley Edge, Wilmslow and Knutsford are all within a 5–10 minute drive, providing a wide range of shopping, schooling and recreational facilities, along with an array of quality restaurants. The motorway network, Manchester Airport, and local rail links are all easily accessible, making Chelford an exceptionally convenient yet tranquil place to live.





Floor Plan

Total floor area 90.0 sq. m. (969 sq. ft.) approx

Whilst every attempt has been made to ensure the accuracy of this floor plan, all measurements are approximate and no responsibility is taken for any error, omission or misstatement. This plan is for illustration purposes only and may not be representative of the property. Plan not to scale. Specifically no guarantee is given on the total square footage of the property if shown on this plan. Any figure given is for initial guidance only and should not be relied on as a basis of valuation.
Plan produced for Purple Bricks. Powered by PropertyBOX

These particulars, whilst believed to be accurate are set out as a general outline only for guidance and do not constitute any part of an offer or contract. Intending purchasers should not rely on them as statements of representation of fact, but must satisfy themselves by inspection or otherwise as to their accuracy. No person in this firm's employment has the authority to make or give any representation or warranty in respect of the property.