



Wright Marshall  
Estate Agents

90 Coppice Road, Willaston, Nantwich, CW5 6QD



**£725 Per Calendar Month**

1 Princess Street, Knutsford, Cheshire, WA16 6BY  
T. 01565 621624  
[Knutsford@wrightmarshall.co.uk](mailto:Knutsford@wrightmarshall.co.uk) /  
[Cheshirelettings@wrightmarshall.co.uk](mailto:Cheshirelettings@wrightmarshall.co.uk)





Located in a popular, purpose-built block in the peaceful village of Willaston on the outskirts of Nantwich, this spacious two-bedroom ground-floor apartment offers comfortable and convenient living.

Council Tax Band - A  
EPC Rating - C

### Description

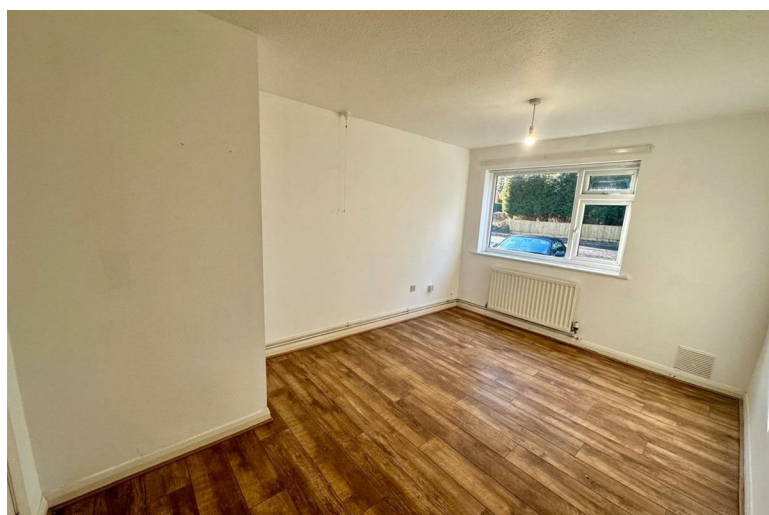
The property is offered unfurnished and features an entrance hall with two generous storage cupboards, a well-proportioned living room, and a fitted kitchen equipped with a range of wall and base units, an oven with induction hob, and under-counter space for white goods. There are two double bedrooms and a family bathroom complete with a shower over the bath, toilet, and sink.

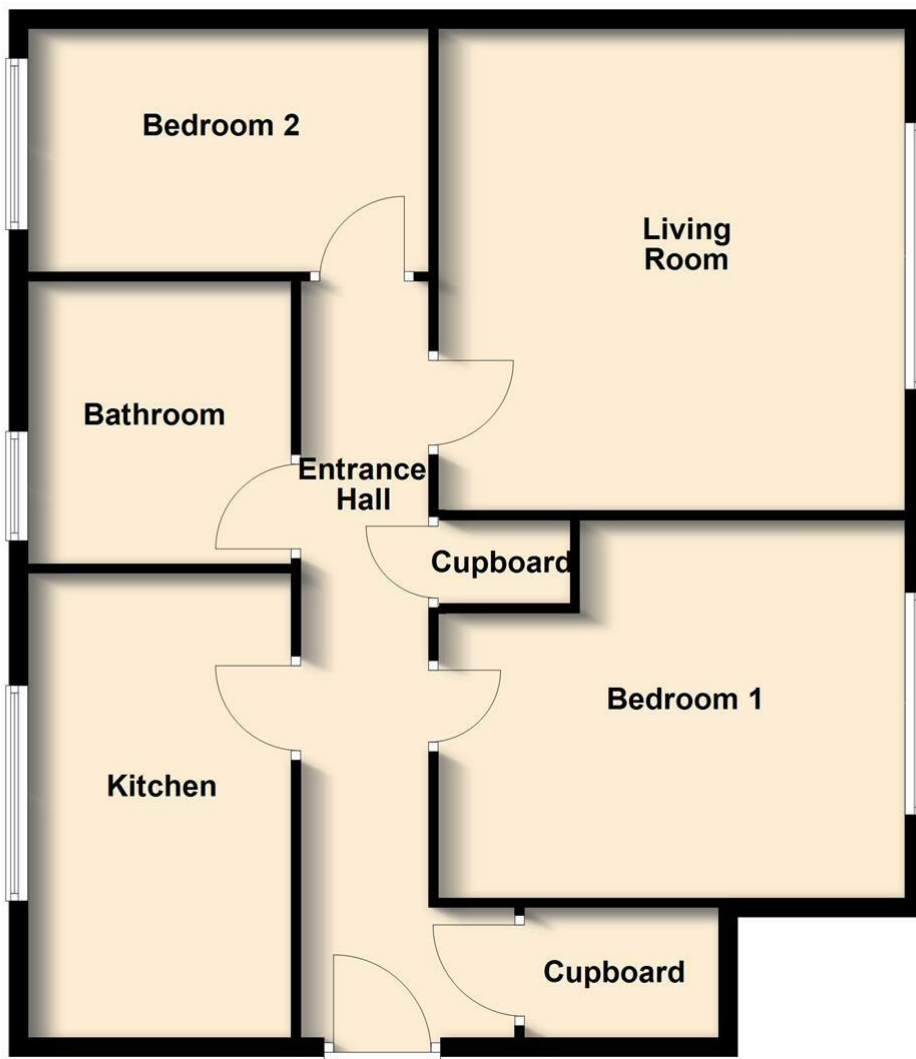
Additional benefits include a private entrance, parking directly outside the front door, and a large single garage.

### Location

Willaston is a charming and welcoming village located just outside Nantwich in Cheshire. Known for its friendly community feel, it offers a mix of local amenities including shops, pubs, and scenic green spaces. The village enjoys excellent transport links to Nantwich and surrounding areas, while maintaining a peaceful, semi-rural atmosphere.

Nantwich is a charming market town set beside the River Weaver with a rich history, a wide range of speciality shops & 4 supermarkets. Four major motorways which cross Cheshire ensure fast access to the key commercial centres of Britain and are linked to Nantwich by the A500 Link Road. Manchester Airport, one of Europe's busiest and fastest developing, is within a 45 minute drive of Nantwich. Frequent trains from Crewe railway station link Cheshire to London-Euston in only 1hr 30mins. Manchester and Liverpool offer alternative big city entertainment.





These particulars, whilst believed to be accurate are set out as a general outline only for guidance and do not constitute any part of an offer or contract. Intending purchasers should not rely on them as statements of representation of fact, but must satisfy themselves by inspection or otherwise as to their accuracy. No person in this firm's employment has the authority to make or give any representation or warranty in respect of the property.