



Wright Marshall
Estate Agents

11 Millbank Close Macclesfield SK11 9SJ



Offers Over £450,000

1 Princess Street, Knutsford, Cheshire, WA16 6BY
T. 01565 621624
Knutsford@wrightmarshall.co.uk /
Cheshirelettings@wrightmarshall.co.uk



Nestled in the charming area of Millbank Close, Chelford, Macclesfield, this delightful detached bungalow enjoys delightful gardens, bordering open fields to the rear and offers a perfect blend of comfort and convenience. With two well-proportioned bedrooms, this property is ideal for small families, couples, or those seeking a peaceful retirement retreat.

Upon entering, you are welcomed into a spacious hallway that provides a warm and inviting atmosphere, with a light and airy lounge/ dining room, perfect for relaxation or entertaining guests. The layout is thoughtfully designed to maximise space and light, creating a homely feel throughout.

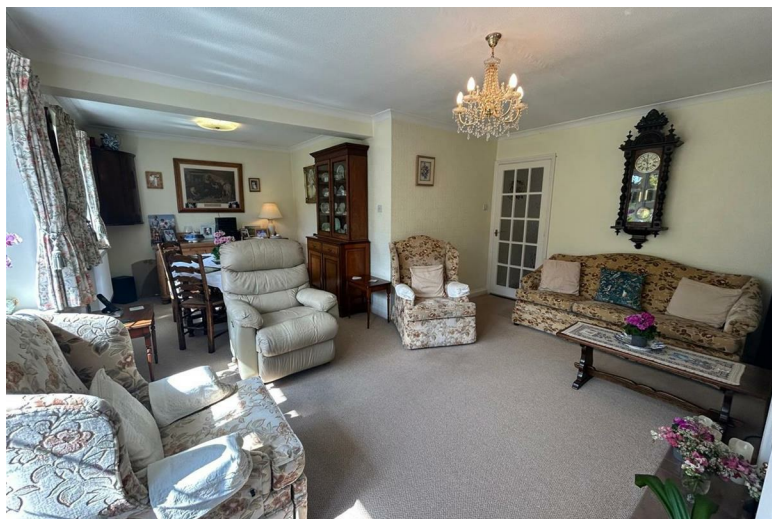
The bungalow features a well-appointed bathroom, with separate wc and the kitchen benefits from a range of wall and base units incorporating built-in ovens & hob

One of the standout features of this property is the ample parking space available for up to four vehicles, a rare find that adds significant value and convenience, especially for families or those who enjoy hosting gatherings.

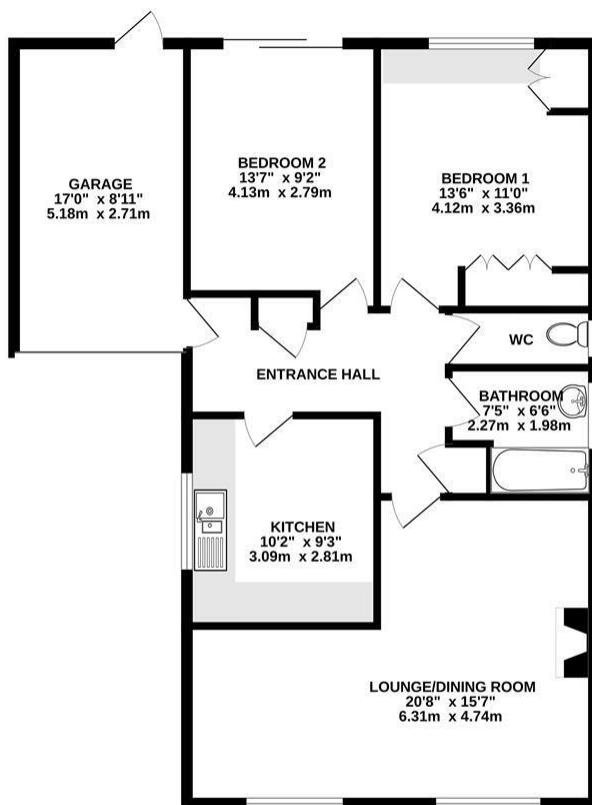
Set in a peaceful neighbourhood, this bungalow is not only a comfortable home but also a gateway to the beautiful countryside and local amenities that Chelford has to offer. With its attractive location and practical features, this property presents an excellent opportunity for anyone looking to settle in a serene yet accessible part of Macclesfield.

Do not miss the chance to make this charming bungalow your new home.





931 sq.ft. (86.5 sq.m.) approx.



TOTAL FLOOR AREA: 931 sq.ft. (86.5 sq.m.) approx.

Whilst every attempt has been made to ensure the accuracy of the floorplan contained here, measurements of doors, windows, rooms and any other items are approximate and no responsibility is taken for any error, omission or misstatement. This plan is for illustrative purposes only and should be used as such by any prospective purchaser. The services, systems and appliances shown have not been tested and no guarantee as to their operability or efficiency can be given.
Made with Metropax G2025

These particulars, whilst believed to be accurate are set out as a general outline only for guidance and do not constitute any part of an offer or contract. Intending purchasers should not rely on them as statements of representation of fact, but must satisfy themselves by inspection or otherwise as to their accuracy. No person in this firm's employment has the authority to make or give any representation or warranty in respect of the property.