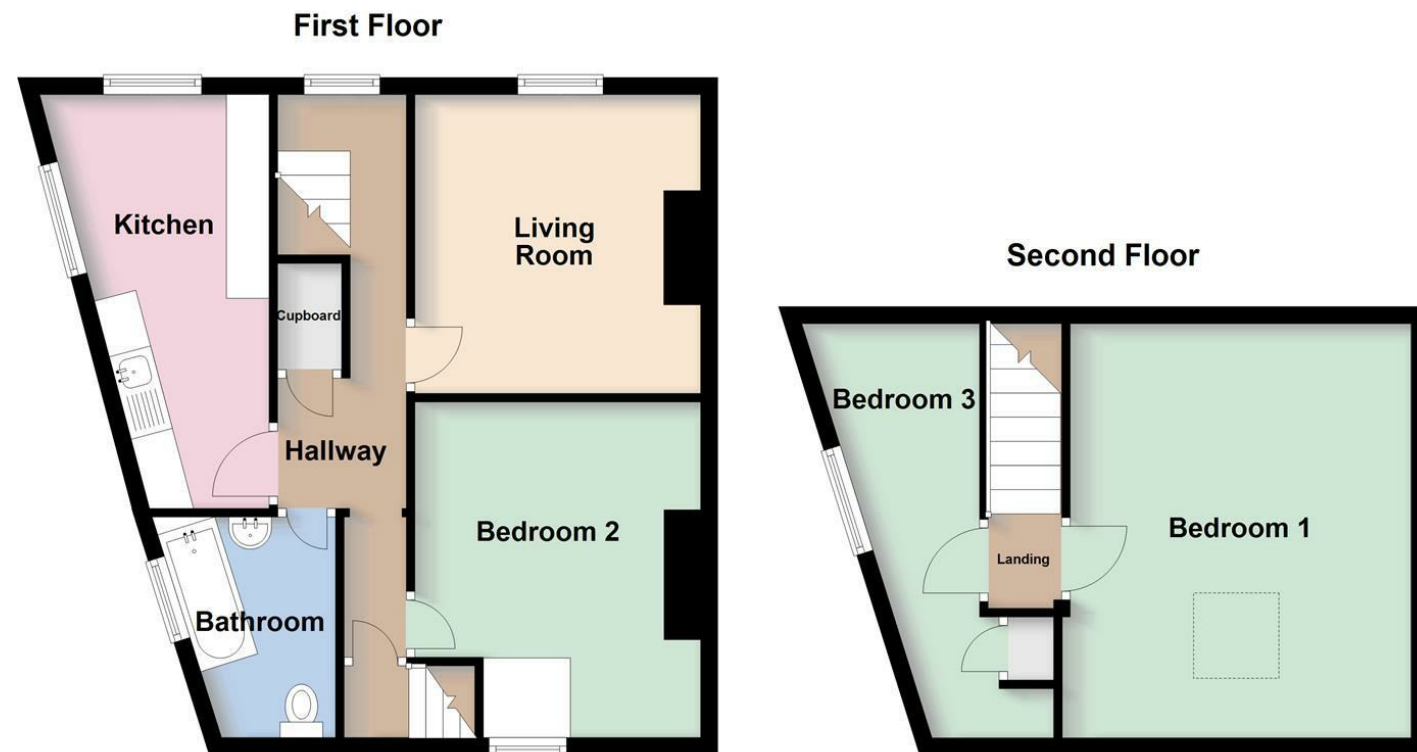




Wright Marshall
Estate Agents

5 HAYFIELD ROAD, CHAPEL-EN-LE-FRITH SK23
0JF

£125,000



All floorplans provided by Petty Real are for guidance only. Please check all dimensions before making any decisions reliant upon them.
Plan produced using PlanUp.



A three-bedroom duplex apartment set over the first and second floors, located close to the town centre and local amenities. The property benefits from its own private ground floor entrance with staircase leading to the first floor. The first floor comprises a hallway, living room with log burner, fitted kitchen, bedroom, and bathroom with a three-piece suite including a shower over the bath. The second floor houses two bedrooms.

MISREPRESENTATION ACT 1967.

Messrs Wright Marshall for themselves and for the vendors or Lessors of this property, whose agents they are, give notice that:

1. The particulars are set out as general outline only for the guidance of intending purchasers, and do not constitute, nor constitute part of, an offer or contract.
2. All descriptions and references to condition and necessary permissions for use and occupation, and other details are given in good faith and are believed to be correct but any intending purchasers or tenants should not rely on them as statements or representations of fact but must satisfy themselves by inspection or otherwise as to the correctness of each of them.
3. No person in the employment of Messrs. Wright Marshall has any authority to make any representation whatever in relation to this property.



8 The Quadrant, Buxton, Derbyshire, SK17 6AW
T. 01298 23038 | buxton@wrightmarshall.co.uk | www.wrightmarshall.co.uk

Buxton | Chester | Crewe | Knutsford | Nantwich | Northwich | Tarporley

A three-bedroom duplex apartment set over the first and second floors, located close to the town centre and local amenities. The property benefits from its own private ground floor entrance with staircase leading to the first floor. The first floor comprises a hallway, living room with log burner, fitted kitchen, bedroom, and bathroom with a three-piece suite including a shower over the bath. The second floor houses two bedrooms.

GROUND FLOOR ENTRANCE

uPVC door and stairs to the first floor.

FIRST FLOOR

HALLWAY

uPVC double glazed window, electric wall-mounted heater, under-stairs storage, and stairs to the second floor.

LIVING ROOM

11'6 x 11 (3.51m x 3.35m)

uPVC double glazed window, log burner, and electric wall-mounted heater.



KITCHEN

15'11 x 9'1 (max) (4.85m x 2.77m (max))

Two uPVC double glazed windows, fitted base units, space for a cooker, stainless steel sink and drainer with mixer tap, plumbing for a washing machine, electric wall-mounted heater, and tiled flooring.



BEDROOM TWO

12'11 x 10'11 (max) (3.94m x 3.33m (max))

uPVC double glazed window and electric wall-mounted heater.



BEDROOM THREE

16 x 7'9 (max) (4.88m x 2.36m (max))

uPVC double glazed window, built-in cupboard, and electric wall-mounted heater.



BATHROOM

9'1 x 6'7 (2.77m x 2.01m)

uPVC double glazed window, bath with shower fitment over, WC with push flush, pedestal wash basin with mixer tap, part-tiled walls, and tiled flooring.



SECOND FLOOR

BEDROOM ONE

16 x 12'4 (4.88m x 3.76m)

Velux window and electric wall-mounted heater.

