



Jay News

London SW7



Jay Mews

London SW7

Accommodation

Entrance Hall

Kitchen/Reception Room

Dining Room

Conservatory Study/Reception Room

Principle Bedroom Suite

2 Further Bedrooms

Bathroom

Terrace

Garage/Gym

This beautifully presented three-bedroom mews house has a wonderful large semi-open plan kitchen/reception area, ideal for entertaining.

The accommodation is arranged over two floors with all bedrooms benefiting from air-conditioning. Along with an impressive and pretty south-facing terrace, leading off the conservatory-style reception/study area, there is a generous garage currently used as a gym.

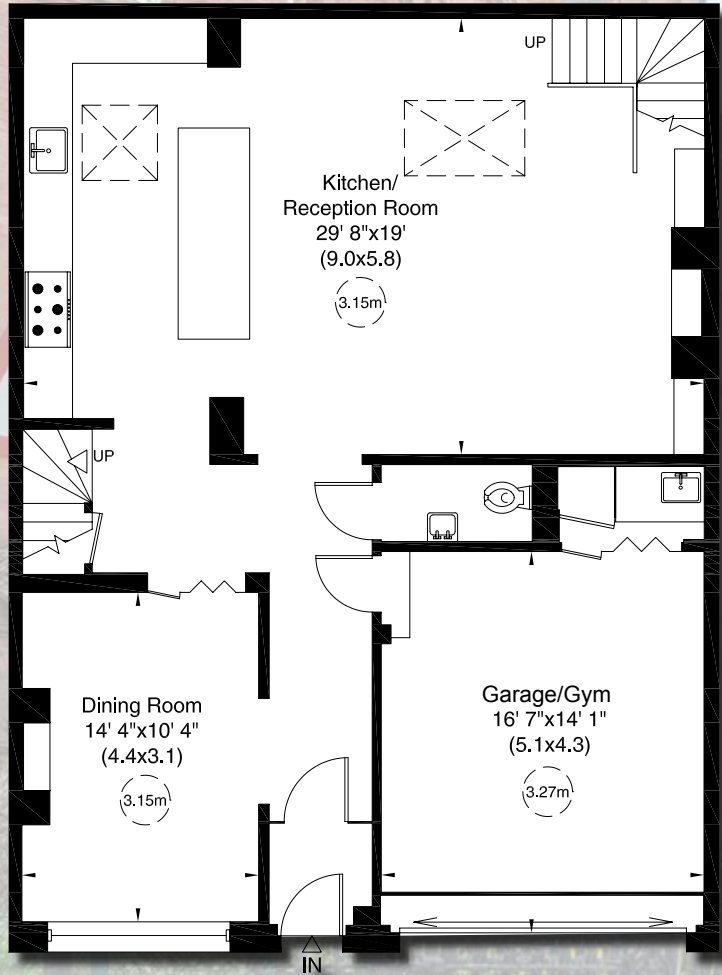
Jay Mews is conveniently located between The Royal Albert Hall and Queen's Gate, just south of Kensington Gardens and Hyde Park beyond. The transport links of South Kensington Tube Station (District, Circle and Piccadilly Lines) are nearby.



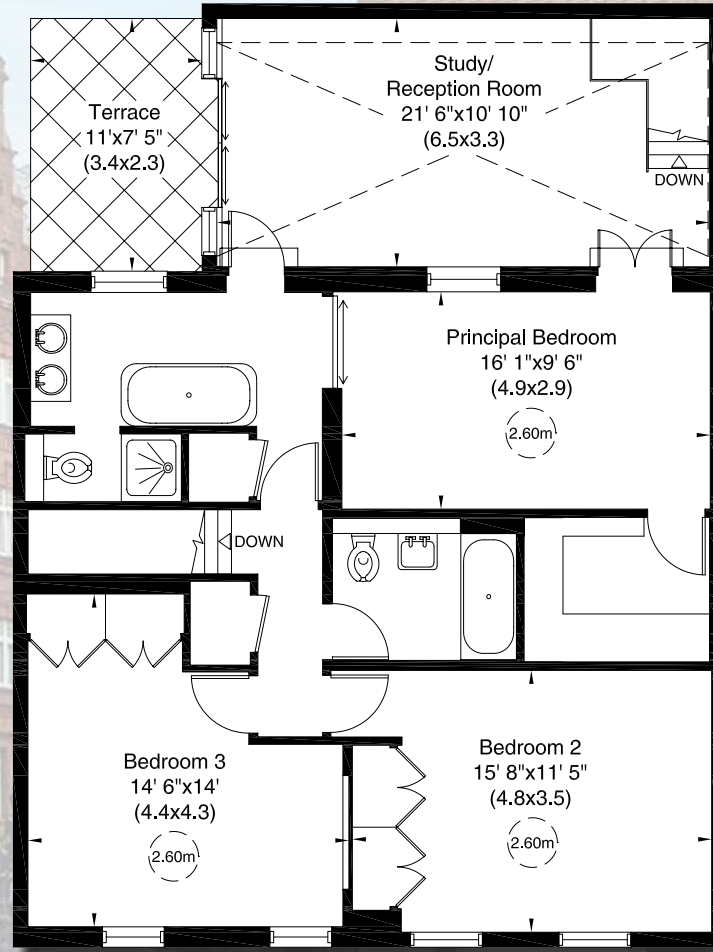




Gross internal area (approx.)
210 Sq m (2,261 Sq ft)



Ground Floor



First Floor

Jay Mews

London SW7

Terms

Guide Price: £3,750,000

subject to contract

Tenure: Freehold

Council Tax Band: H

Local Authority: City of Westminster

Score	Energy rating	Current	Potential
92+	A		
81-91	B		83 B
69-80	C		
55-68	D	57 D	
39-54	E		
21-38	F		
1-20	G		



+44 (0) 7957 118 884

45 Pont Street, SW1X 0BD

thomas@holcroftpropertyconsultants.com

IMPORTANT NOTICE

All information in this document is correct to the best of our knowledge at the time of going to print. These particulars are set out as a general outline only for guidance to intending Purchasers or Lessees, and do not constitute any part of an offer or contract.