

AARON SHOHEET PROPERTY



32 Henry Darlot Drive Millbrook Park, Mill Hill East, NW7 1SB

Aaron Shohet Property are thrilled to present to the market this stunning 3 bedroom end-of-terrace Townhouse, located in the heart of Millbrook Park's flagship development built by Joseph Homes.

This 3 bedroom house has been beautifully designed and offers excellent proportions including a large rear garden, driveway parking, garage, spacious open-plan kitchen, living rooms and 3 large bedrooms

At the ground floor a large entrance hallway leads to the fantastically modern open-plan kitchen diner, with fully integrated appliances and stunning feature island. Sliding doors bring the outside in and open onto the spacious South-facing garden lawn with artificial lawn for minimal upkeep and all year round green. There is also a side-access down the side of the house.

The ground floor also gives access to the large garage, suitable for up to two cars and can also double up as a home-gym, excellent storage room or home-office. There is also a guest toilet and utility room as well as additional storage cupboard downstairs.

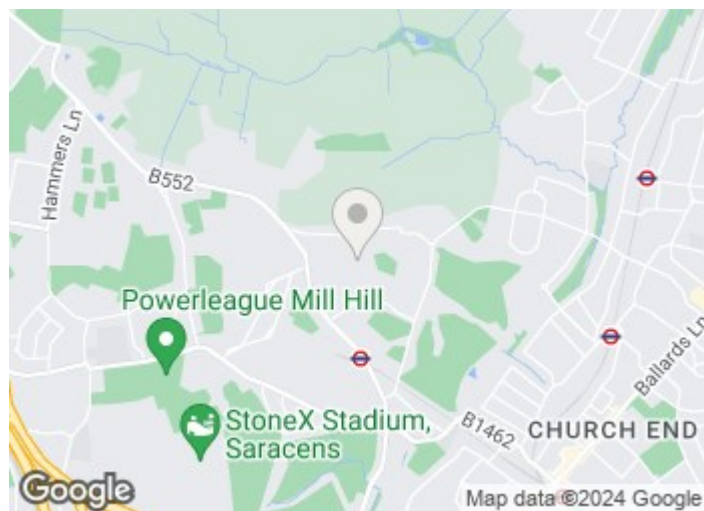
£1,100,000

32 Henry Darlot Drive

Millbrook Park, Mill Hill East, NW7 1SB



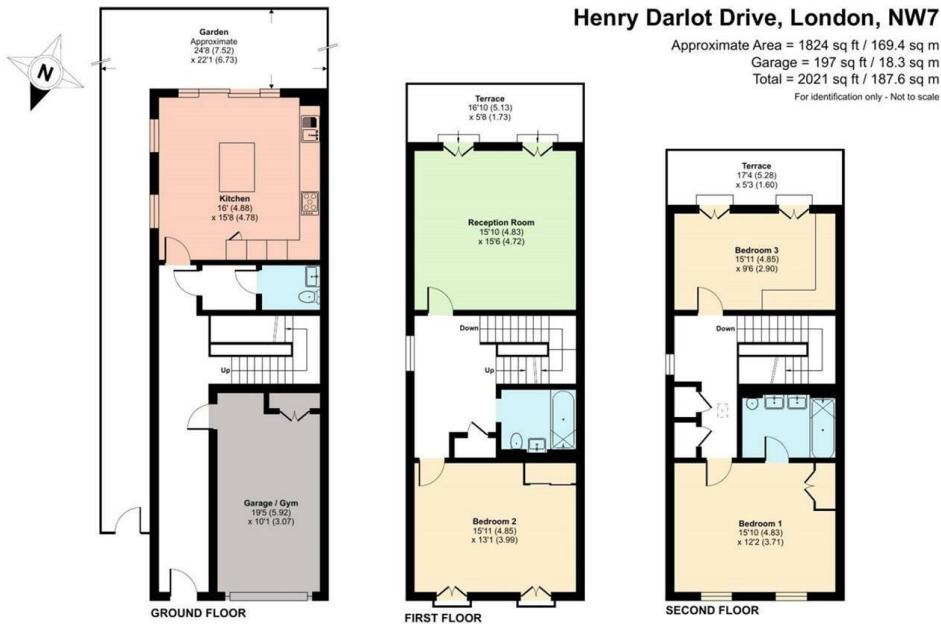
- 3 Bedrooms
- Built by Joseph Homes
- Driveway
- Sole Agents
- 2 Bathrooms
- Garage
- Large Garden
- Modern Townhouse
- Spacious Reception
- End Terrace



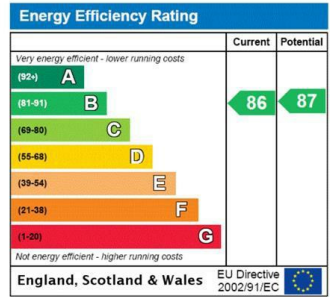
[Directions](#)



Floor Plan



Local Authority: Barnet
 Council Tax band: G
 Tenure: Freehold



Floor plan produced in accordance with RICS Property Measurement Standards incorporating International Property Measurement Standards (IPMS2 Residential). ©indec.com 2023. Produced for Station. REF: 992773



DISCLAIMER: In accordance with the 1993 Misrepresentation Act the agent had not tested any apparatus, equipment, fixtures, fittings or services and so, cannot verify they are in working order, or fit for their purpose. Neither has the agent checked the legal documentation to verify the leasehold/freehold status of the property. The buyer is advised to obtain verification from their solicitor or surveyor. Also, photographs are for illustration only and may depict items which are not for sale or included in the sale of the property. All sizes are approximate. All dimensions include wardrobe spaces where applicable.

These particulars, whilst believed to be accurate are set out as a general outline only for guidance and do not constitute any part of an offer or contract. Intending purchasers should not rely on them as statements of representation of fact, but must satisfy themselves by inspection or otherwise as to their accuracy. No person in this firm's employment has the authority to make or give any representation or warranty in respect of the property.

