



www.inspiredldn.co.uk

West India Quay, 26 Hertsmere Road, Canary Wharf, E14

£3,000PCM (Deposit: £3,461)

1 1 1

- 15th Floor Apartment with Breathtaking Views
- Floor-to-Ceiling Windows with Natural Light
- Elegant Bathroom with Full-Size Bath
- Prime Location in West India Quay Development
- Moments from Waterside Bars & Restaurants
- Spacious Open-Plan Living & Dining Area
- Modern Kitchen with Integrated Appliances
- Generous Double Bedroom with Fitted Wardrobes
- Short Walk to Canary Wharf & Elizabeth Line
- Ideal for Professionals Seeking City Living



Tax Band: Furnished: Furnished

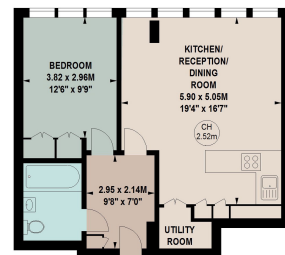
A beautifully furnished one-bedroom apartment set on the 15th floor of the prestigious West India Quay development, offering panoramic views across the London skyline and canal. The property features a bright open-plan living area with floor-to-ceiling windows, a sleek kitchen with integrated appliances, a spacious double bedroom with built-in wardrobes, and a modern bathroom with high-quality fittings. Residents benefit from a concierge service, lift access, and a stylish reception area. Ideally located moments from West India Quay DLR and Canary Wharf, with excellent transport links via the Jubilee line and Elizabeth line, plus easy access to waterside bars, restaurants, and shops.



Hertsmere Road, E14

Approximate gross internal area
56.85 sq m / 612 sq ft

Key:
CH - Ceiling Height



Fifteenth Floor

The floor plan is not to scale and measurements and areas shown are approximate and therefore should be used for illustrative purposes only. The plan has been prepared in accordance with the RICS code of Measuring Practice and whilst we have confidence in the information produced, it must not be relied on. If there is any aspect of particular importance, you should carry out or commission your own inspection of the property.
Copyright of Stu J Beesley.



P: 0208 187 2503

E: lettings@inspiredldn.co.uk