



www.inspiredldn.co.uk

Greencroft Gardens, NW6

£2,650PCM (Deposit: £3,057)

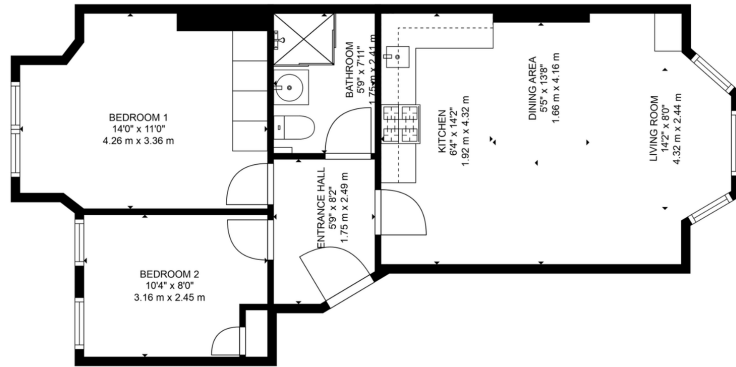
🛏️ 2 🚿 1 🚗 1

- Exquisite 2-bedroom flat
- Bright living room with high ceilings
- Sleek kitchen with gas hobs and electric oven
- Spacious master bedroom with built-in wardrobes
- Tree-lined streets in South Hampstead
- Modern open-plan kitchen and living room
- Expansive windows for natural light
- Fully tiled modern bathroom with luxurious shower
- Recently refurbished with new wooden flooring
- Excellent transport links with multiple stations and bus routes nearby



Tax Band: D Furnished: Not specified

Discover this exquisite 2-bedroom flat in prestigious Greencroft Gardens. With new wooden flooring, an open-plan kitchen, and a bright living room featuring high ceilings and expansive windows, it's perfect for modern living. The master bedroom is spacious with ample storage, while the second bedroom is versatile. Located in tranquil South Hampstead, enjoy tree-lined streets and Victorian red-brick houses. Finchley Road Station is nearby, offering access to the Metropolitan and Jubilee Lines, with Finchley Frognal Overground and numerous bus routes enhancing connectivity. Don't miss out—book your viewing today!



TOTAL: 594 sq. ft, 55 m²
FLOOR 1: 594 sq. ft, 55 m²
FLOOR PLAN CREATED BY CURBCASA A/R. MEASUREMENTS DEEMED HIGHLY RELIABLE BUT NOT GUARANTEED.



P: 0208 187 2503

E: lettings@inspiredldn.co.uk