



www.inspiredldn.co.uk

Loveridge Mews, NW6

£2,700PCM (Deposit: £3,115)

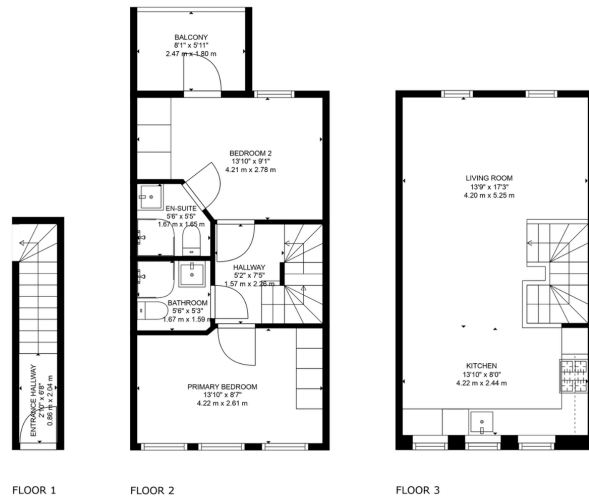
🛏️ 2 🍽️ 2 🚗 1

- Two bedroom apartment
- Master bedroom with en suite
- Spacious open-plan kitchen
- Two luxurious floors
- Bright reception area
- Zoned underfloor heating
- Private balcony retreat
- Bespoke joinery
- Close to Kilburn & Brondesbury Stations
- Direct trains to Luton, Gatwick, Brighton



Tax Band: D Furnished: Furnished

Experience unparalleled luxury at this stunning flat in Loveridge Mews. Spanning two floors, the property features zoned underfloor heating, bespoke joinery, marble surfaces, brushed brass ironmongery, an integrated sound system, and a smart home video entry system. The master bedroom offers fitted wardrobes, an en suite shower room, and a private balcony, while the second bedroom includes built-in wardrobes and an additional shower room. The bright, open-plan kitchen and reception area on the second floor is perfect for entertaining. Located near Kilburn Station (Jubilee Line) and Brondesbury Station (Overground), with ThamesLink services to Luton, Gatwick, and Brighton, commuting is effortless. Enjoy Kilburn High Road's vibrant shops, cafes, and restaurants, the nearby O2 Centre, and green spaces like Kilburn Grange Park. Top-rated schools and a strong community make Loveridge Mews perfect for families, professionals, and anyone seeking the best of London living.



TOTAL: 764 sq. ft. 70 m²
 BELOW GROUND: 47 sq. ft. 4 m², FLOOR 2: 359 sq. ft. 33 m², FLOOR 3: 358 sq. ft. 33 m²
 EXCLUDED AREAS: BALCONY: 49 sq. ft. 4 m²
 FLOOR PLAN CREATED BY CURBCASA AND MEASUREMENTS DEEMED HIGHLY RELIABLE BUT NOT GUARANTEED.



P: 0208 187 2503

E: lettings@inspiredldn.co.uk