



www.inspiredldn.co.uk

Knight House, Gainsford Street, Shad Thames, SE1

£2,100PCM (Deposit: £2,423)

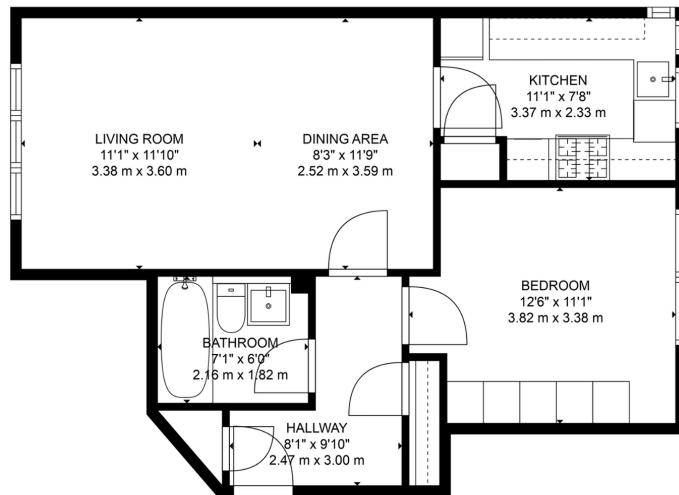


- Contemporary one-bedroom apartment.
- Modern Kitchen and Bathroom: Equipped with modern amenities.
- Spacious Layout: Very spacious interior.
- Top-Floor Location: Positioned on the top floor for privacy and views.
- Private Car Park: Includes a rare private car park space.
- Double Bedroom: Features a double bedroom with fitted wardrobes.
- Natural Light: Large reception room with plenty of natural light.
- Great Storage: Ample storage solutions throughout the property
- Additional Storage Space: Extra storage space included.
- Proximity to Landmarks: Close to Tower Bridge, The Shard, Tate Modern, and the Tower of London.



Tax Band: E Furnished: Furnished

Discover a modern top-floor one-bedroom apartment in the vibrant heart of Shad Thames. This bright, spacious flat boasts a sunlit reception room, a double bedroom with fitted wardrobes, and a sleek kitchen and bathroom. Enjoy the rare luxury of a private car park space and additional storage. Nestled along the scenic River Thames, Shad Thames is rich in history and character, near iconic landmarks like Tower Bridge, The Shard, Tate Modern, and the Tower of London. Savor the area's lively atmosphere with its diverse bars, restaurants, and the nearby Bermondsey, Maltby Street, and Borough Markets. Excellent transport links via London Bridge and Tower Hill stations, plus the river taxi, ensure you're well-connected. Experience the perfect blend of historic charm and modern living in one of London's most sought-after neighbourhoods.



TOTAL: 573 sq. ft, 53 m²
 FLOOR 1: 573 sq. ft, 53 m²
 FLOOR PLAN CREATED BY CURCASA ARL. MEASUREMENTS DEEMED HIGHLY RELIABLE BUT NOT GUARANTEED.



P: 0208 187 2503

E: lettings@inspiredldn.co.uk