



www.inspiredldn.co.uk

Brooklands Court, Cavendish Road, London, NW6

£2,250PCM (Deposit: £2,596)

🛏️ 2 🚿 1 🚻 1

- Two Bedrooms
- Large Open Plan Kitchen
- Built in appliances
- Dishwasher
- Furnished
- Communal Garden
- On street parking
- Wooden Floor
- Broadband and TV Licence included
- 5 mins walk of Jubilee Line



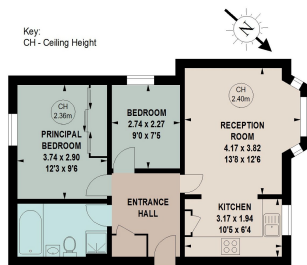
Tax Band: D Furnished: Furnished

This elegant ground-floor two-bedroom apartment, located near Kilburn and Brondesbury stations, will be refurbished with fresh paint and new windows before the new tenancy. It features a well-lit reception room connected to a well-appointed kitchen, two spacious double bedrooms, and a stylish four-piece bathroom suite. Residents can enjoy communal gardens and proximity to the vibrant amenities of West Hampstead and Queen's Park. With swift access to the A5 for convenient travel to central London and the North, this inviting apartment blends modern convenience with residential tranquillity, making it an excellent choice for discerning tenants.



Brooklands Court, NW6

Approximate gross internal area
52.12 sq m / 561 sq ft



Ground Floor

The floor plan is not to scale and measurements and areas shown are approximate and therefore should be used for illustrative purposes only. The plan has been prepared in accordance with the RICS code of Measuring Practice and whilst we have confidence in the information produced, it must not be relied on. If there is any aspect of particular importance, you should carry out or commission your own inspection of the property.
Copyright of Stu J. Beesley.



P: 0208 187 2503

E: lettings@inspiredldn.co.uk