



www.inspiredldn.co.uk

Broomsleigh Street, NW6

£3,500PCM (Deposit: £1,615)



- Stylish Victorian Design One Bedroom
- Restful Bedroom Retreat
- Modern Bathroom Oasis
- Outdoor Living
- Inclusive Bills
- Spacious Living Room
- Fully Equipped Kitchen
- High Ceilings & Natural Light
- Move-In Ready
- Prime West Hampstead Location

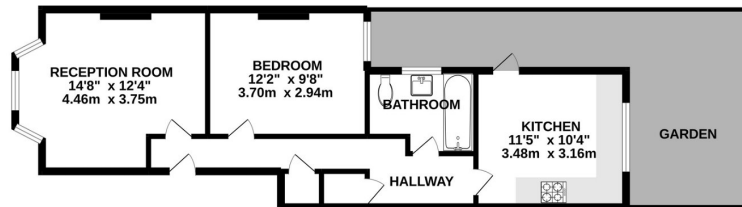


Tax Band: D Furnished: Furnished

Short or Mid-term! Discover your perfect retreat at Broomsleigh Street, NW6! This charming ground-floor Victorian apartment features a beautifully lit 1-bedroom space with high ceilings, a spacious living room complete with a new sofa bed, smart TV, and work area, and a fully equipped kitchen with access to a private patio for alfresco dining. The bedroom boasts a luxurious double bed, ample storage, and a dressing table, while the stylish bathroom offers a refreshing bathtub and shower combo. With inclusive bills, full furnishings, and convenient amenities like central heating and a washer-dryer, this tranquil haven is ready for immediate move-in. **Available for short or mid-term stays starting June 2024**, it's nestled in the vibrant West Hampstead area, providing easy access to London's attractions via nearby transport links. Book now and make this your unforgettable retreat!



GROUND FLOOR
536 sq.ft. (49.8 sq.m.) approx.



GROUND FLOOR
TOTAL FLOOR AREA: 536 sq ft. (49.8 sq.m.) approx.
While every attempt has been made to ensure the accuracy of the floorplan contained here, measurements of doors, windows, rooms and any other items are approximate and no responsibility is taken for any error, omission or mis-statement. This plan is for illustrative purposes only and should be used as such for any prospective purchaser. The services, systems and appliances shown have not been tested and no guarantee as to their operability or efficiency can be given.
Made with Metrepro ©2022



P: 0208 187 2503

E: lettings@inspiredldn.co.uk