



www.inspiredldn.co.uk

Oaklands House 59-65, Belsize Road

£499,950

🛏️ 1 🍽️ 1 🚗 1

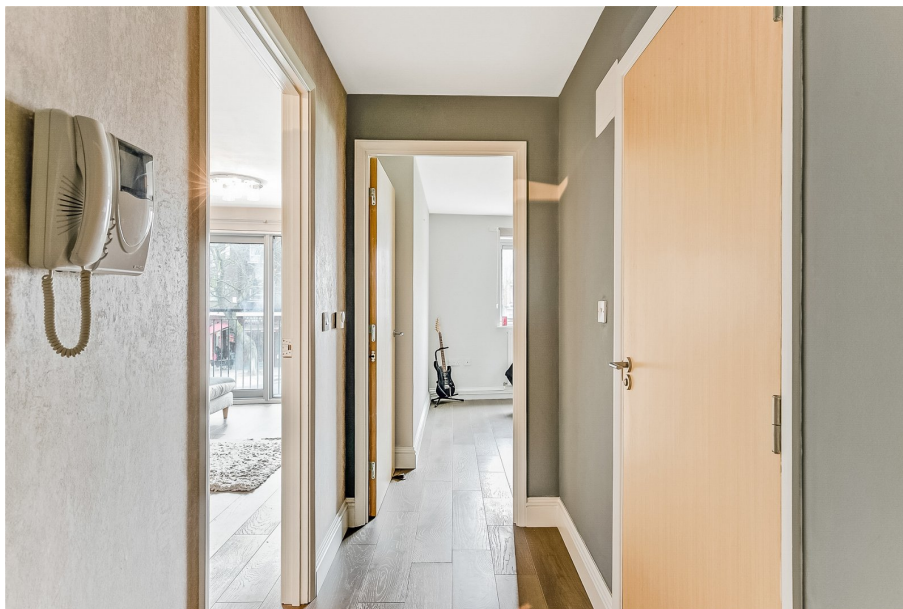
- Modern One Bedroom Flat
- Designer Kitchen
- Integrated Appliances
- Recent Refurbishment
- Open Plan
- 561 sq ft
- First-Floor Location
- Lift Access
- Abundance of Local Amenities
- Proximity to Swiss Cottage Underground Station



Step into the epitome of elegance with our recently refurbished, high-spec one-bedroom apartment nestled in the heart of Belsize Road. Boasting a sleek designer kitchen, exquisite wallpaper, and chic tiles, this residence exudes sophistication and modernity at every turn.

Whether you're a first-time buyer ready to embark on your homeownership journey or an astute investor seeking lucrative opportunities, this gem of a property promises to fulfill your dreams. Situated on the first floor and offering the convenience of a lift, accessibility and comfort blend seamlessly in this urban oasis. Location, they say, is everything, and Belsize Road delivers on every front. Enjoy effortless commuting with Swiss Cottage Underground Station or South Hampstead Overground just a stone's throw away, ensuring seamless connections to the rest of the city.

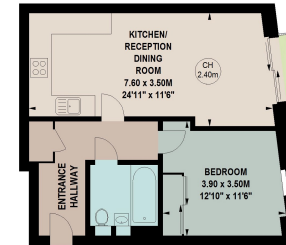




Oakland House, NW6

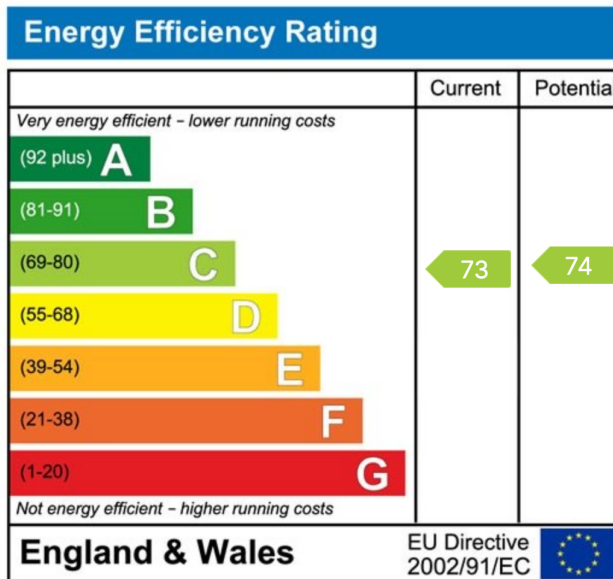
Approximate gross internal area
52.12 sq m / 561 sq ft

Key:
CH - Ceiling Height



First Floor

The floor plan is not to scale and measurements and areas shown are approximate and therefore should be used for illustrative purposes only. The plan has been prepared in accordance with the RICS code of Measuring Practice and whilst we have confidence in the information produced, it must not be relied on. If there is any aspect of particular importance, you should carry out or commission your own inspection of the property.
Copyright of Stu J Beesley.



P: 0208 187 2502

E: sales@inspiredldn.co.uk