



www.inspiredldn.co.uk

Monks Close, Enfield, EN2

£450,000

🛏️ 2 🚿 1 🚗 1

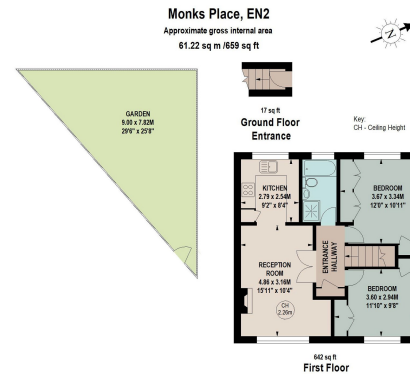
- Two Double Bedroom
- Luxurious Bathroom
- Wooden flooring
- Loft Access
- 930 Year Lease
- Generous Reception Room
- Modern Integrated Kitchen
- Private Rear Garden
- Private Entrance
- Close to Gordon Hill and Enfield Chase mainline train stations



Stunning Two Bedroom Maisonette with Private Garden

Welcome to Monks Close, where sophistication meets convenience! Inspired Real Estate London proudly presents this exquisite first-floor maisonette boasting two double bedrooms, perfect for those seeking contemporary living with a touch of elegance.





The floor plan is not to scale and measurements and areas shown are approximate and therefore should be used for illustrative purposes only. The plan has been prepared in accordance with the RICS Code of Measuring Practice and whilst we have confidence in the information produced, it must not be relied on. If there is any aspect of particular importance, you should carry out or commission your own inspection of the property.
 Copyright of St. J. Beeley.



Energy Efficiency Rating		
	Current	Potential
Very energy efficient - lower running costs		
(92 plus) A		
(81-91) B		
(69-80) C	70	74
(55-68) D		
(39-54) E		
(21-38) F		
(1-20) G		
Not energy efficient - higher running costs		
England & Wales	EU Directive 2002/91/EC	



P: 0208 187 2502
 E: sales@inspiredldn.co.uk