



Victoria Avenue

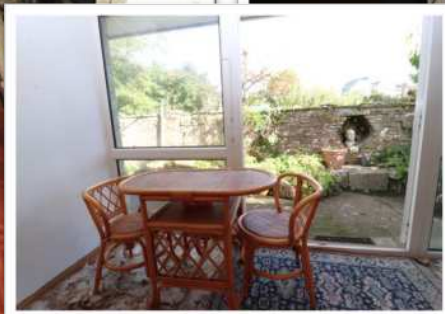
Swanage

BH19 1AS

2/3 BEDROOM FREEHOLD BUNGALOW WITH INTEGRAL GARAGE & COURTYARD GARDEN WITHIN AN EASY WALK OF THE TOWN CENTRE

Guide Price £435,000

**ALBURY
& HALL**



Built of Purbeck stone, this 2/3 bedroom chalet bungalow with internal square footage of approximately 1332 sq.ft. is a freehold property with right of access across the Greystone Garage Workshop yard.

A storm porch covers the Front Door, which opens into an Entrance Hallway from where all ground floor rooms are accessed. An open plan Lounge/Diner extends the depth of the property, a triple aspect room with patio doors opening onto the rear courtyard garden. There is a lovely open fireplace and ample space for comfortable seating, dining table and chairs. The Kitchen is of good size, designed with a range of base and eye level storage cupboards and good workspace inset with sink and gas hob with extractor hood over, there is an integral eye level oven, dishwasher, washing machine and fridge/freezer.

Stairs from the hallway lead up to the first floor landing, 3 bedrooms, bathroom and separate w.c. The Master Bedroom and second Bedroom are doubles with built in wardrobes or eaves storage, both are light south facing rooms. Bedroom 3/Study to the rear of the property is a nursery sized/single room with built in wardrobes, ideal for a home office with storage. The Family Bathroom comprises of Bath and wash basin with storage cupboard with adjoining, separate w.c.

The integral 18'2" x 8'11" garage is accessed from the front and has two windows to the rear. There is parking space for two vehicles on the hardstanding along the front of the property and space for a trailer alongside.

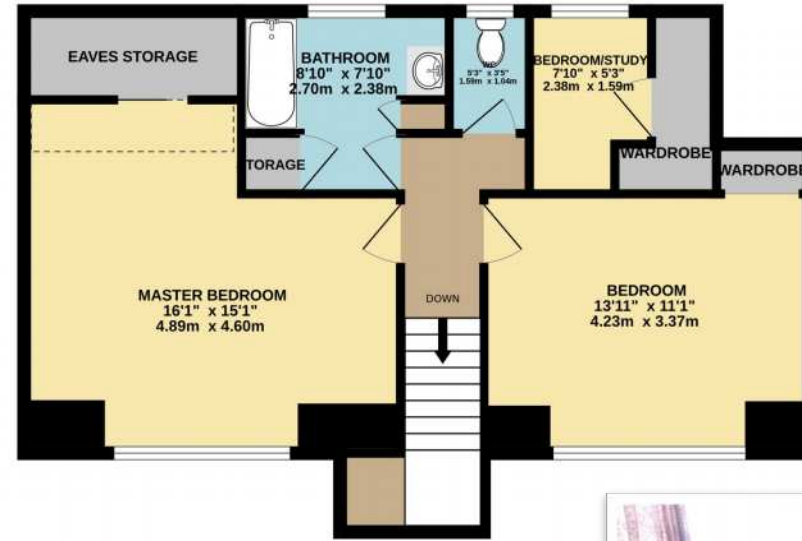
Outside – The rear courtyard garden has a Purbeck stone boundary wall and contains raised flower beds with shrubs and a cherry blossom tree.

This offers a great development opportunity to combine with the purchase of Greystone Garage site (also offered for sale with Albury & Hall), a prime site for conversion and new build with allocated parking.

GROUND FLOOR
726 sq.ft. (67.5 sq.m.) approx.



1ST FLOOR
606 sq.ft. (56.3 sq.m.) approx.



Energy Efficiency Rating		Current	Potential
Very energy efficient - lower running costs			
(92-100)	A		
(81-91)	B		
(69-80)	C		80
(55-68)	D		
(39-54)	E		52
(21-38)	F		
(1-20)	G		
Not energy efficient - higher running costs			
England, Scotland & Wales			
EU Directive 2002/91/EC			

TOTAL FLOOR AREA : 1332 sq.ft. (123.7 sq.m.) approx.

Whilst every attempt has been made to ensure the accuracy of the floorplan contained here, measurements of doors, windows, rooms and any other items are approximate and no responsibility is taken for any error, omission or mis-statement. This plan is for illustrative purposes only and should be used as such by any prospective purchaser. The services, systems and appliances shown have not been tested and no guarantee as to their operability or efficiency can be given.
Made with Metropix ©2023





Viewing by appointment through sole agents:

Albury & Hall (Dorset) Ltd, 24 Station Road, Swanage. BH19 1AF

01929 66 00 00 info@alburyandhall.co.uk www.alburyandhall.co.uk

**ALBURY
& HALL**

Registered in England & Wales Company No. 14528884 . PLEASE NOTE: Measurements quoted are approximate and for guidance only. Fixtures and fittings , services and appliances have not been tested and therefore no guarantee can be given that they are in working order. Images have been produced for information and it cannot be inferred that any items shown is included with the property. These particulars are believed to be correct but their accuracy is not guaranteed and they do not constitute an offer or form part of a contract. Solicitors are specifically requested to verify the sales particulars details in the pre contract enquiries in particular price, local and other services.