



Wyke Road

Weymouth

DT4 9QN

CHARACTER PORTLAND STONE BUILT, 2 BEDROOM, DETACHED,  
COTTAGE WITH PRIVATE PARKING & GARDEN IN NEED OF FULL  
REFURBISHMENT & MODERNISATION

**Guide Price £425,000**

**ALBURY  
& HALL**



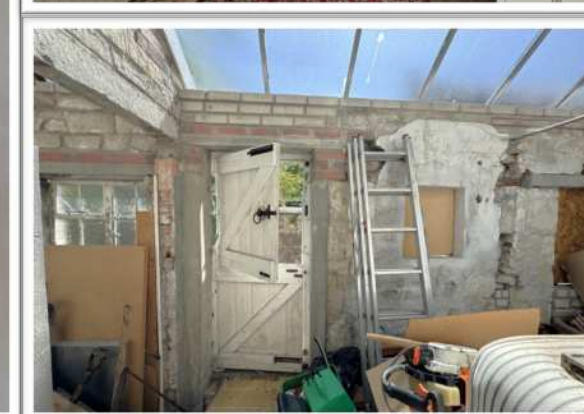


This attractive Portland Stone cottage set back from the road is accessed by a very grand, shared entrance gateway with ornate stone pillars. The driveway leads to a smaller, similarly pillared gateway following through to the external courtyard/parking. The Front Door opens into a small Hallway followed by two ground floor Reception rooms with open fire/chimney access and small Kitchen. There is a glazed roofed utility/storage room with back door to side alleyway. Stairs lead up to the first floor with two double Bedrooms and Family Bathroom.

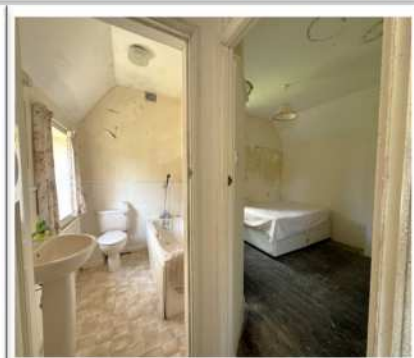
Outside – To the front of the property is a paved courtyard enclosed by a stone wall, a lovely, sheltered spot combining parking and garden space. There is more garden to the side of the cottage, again surrounded by a wall and hedging, rather overgrown at present but plenty of potential. The whole property is in need of full renovation and modernisation, with any extension or structural work being subject to planning approval and building control. There is great potential to turn this cottage into a superb home or holiday home in the great coastal location of Weymouth, just a mile walk from the nearest beach.

Weymouth, with its Blue Flag-winning beach and stunning harbour, is consistently recognised as one of the top twenty beaches in Europe. Whether you're relaxing on Weymouth beach or watching boats come and go in the charming harbour, this coastal gem has something for everyone. With beautiful golden sands sprinkled with deckchairs, safe shallow waters, an action-packed events programme and a pretty harbourside, you certainly won't be disappointed. Weymouth's fine seafront provides an impressive backdrop for sailing events and whether you enjoy cycling, walking, or water sports, Weymouth is the perfect destination for outdoor activities. Take a stroll along the esplanade and golden sands to admire the beauty of the scenery that surrounds you. The scenic trails around Weymouth also offer stunning views of the Jurassic Coast! The beautiful historic harbour is a great place to while away the hours and watch all the comings and goings: luxury yachts, fishing boats, tall ships, RNLI Lifeboats and even cross-harbour rowing ferries. The harbourside bars or bistros are a great way to spend a summer's evening! You'll be spoilt for choice for places to eat out in Weymouth, with restaurants serving everything from fresh seafood to hearty pub meals, whether you prefer dining with an ocean view or grabbing a takeaway for a beach picnic, Weymouth has you covered.















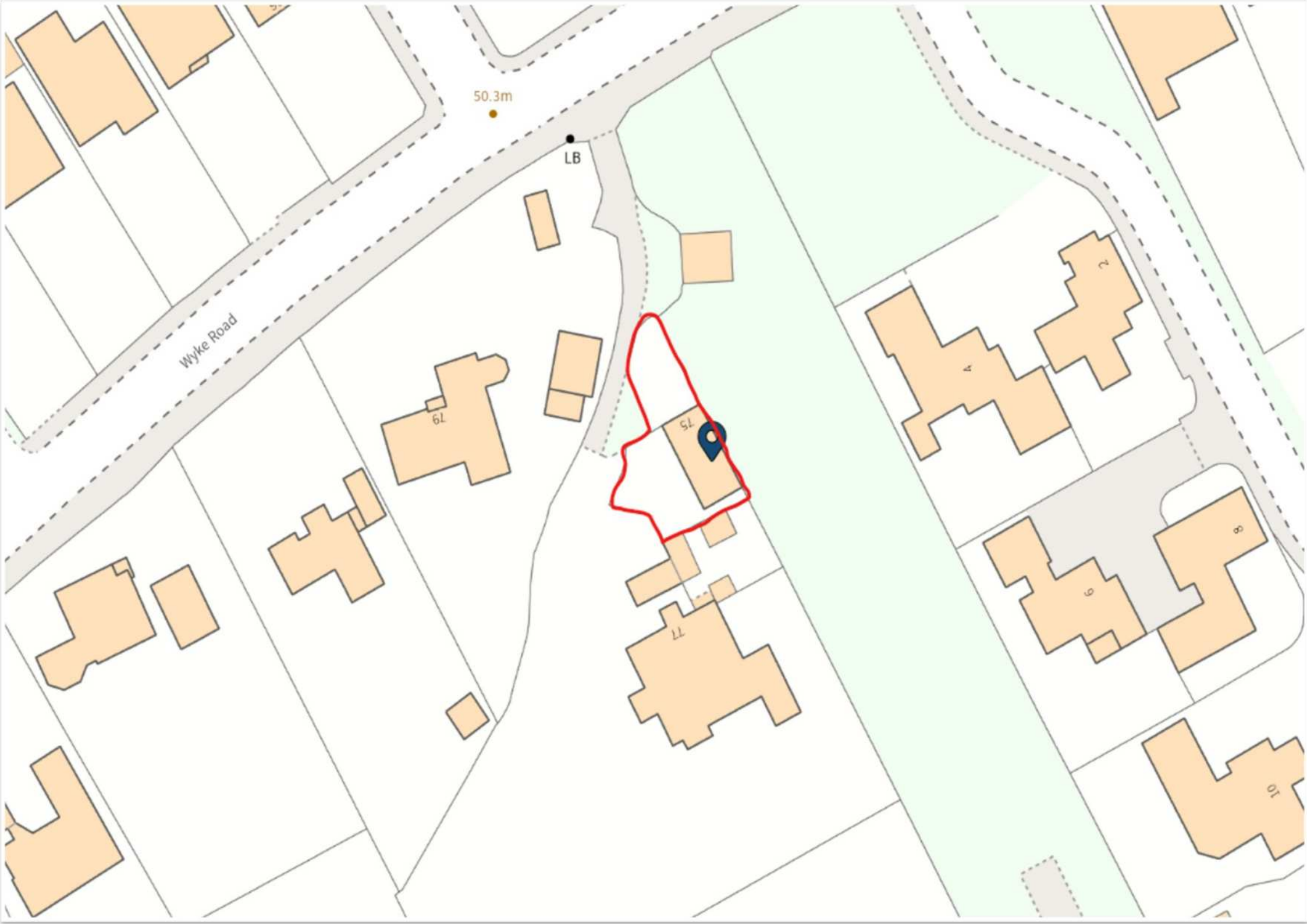


Wyke Rd

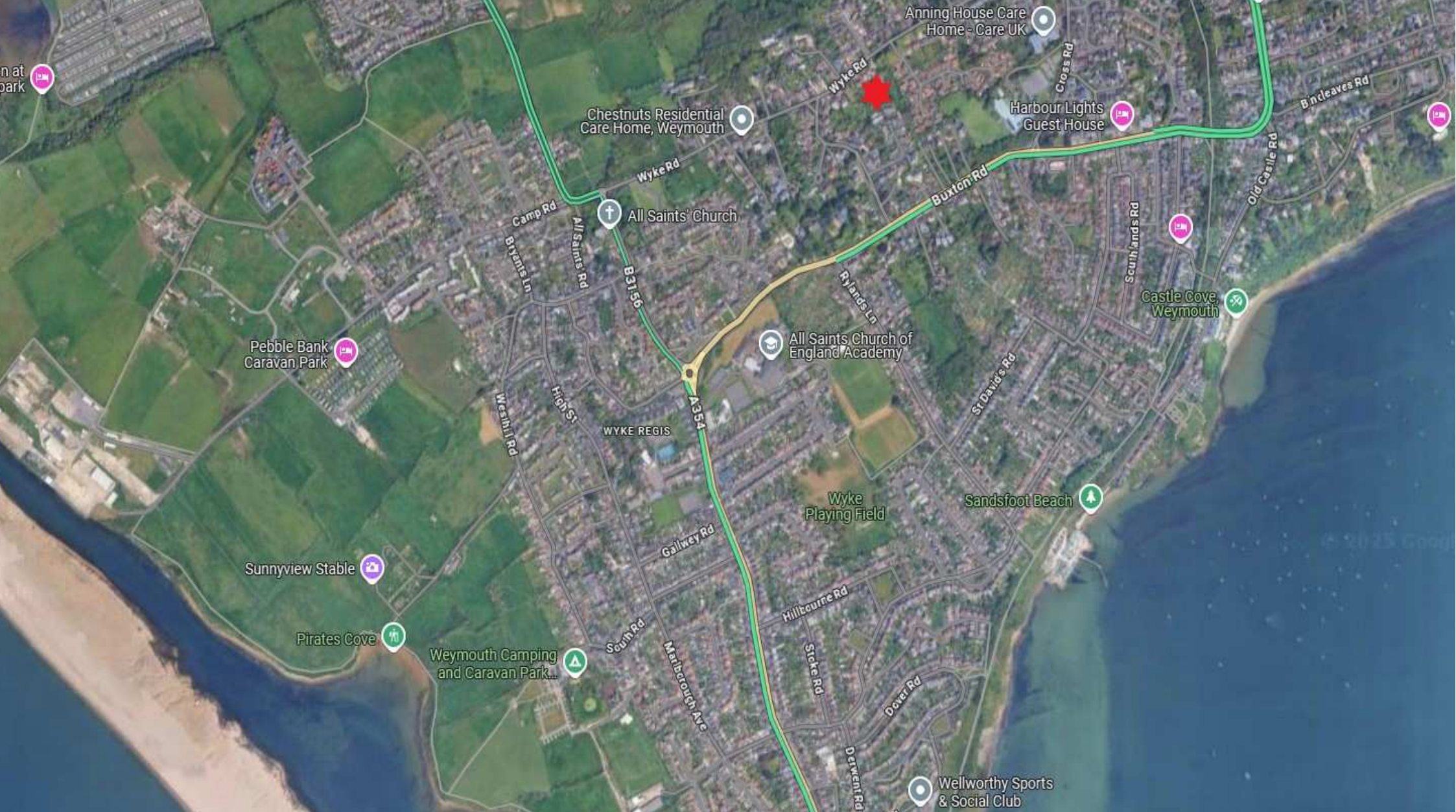
Connaught Gardens

Google









Viewing by appointment through sole agents:

**Albury & Hall (Dorset) Ltd, 24 Station Road, Swanage. BH19 1AF**

**01929 66 00 00 [info@alburyandhall.co.uk](mailto:info@alburyandhall.co.uk) [www.alburyandhall.co.uk](http://www.alburyandhall.co.uk)**

**ALBURY  
& HALL**

Registered in England & Wales Company No. 14528884 . PLEASE NOTE: Measurements quoted are approximate and for guidance only. Fixtures and fittings , services and appliances have not been tested and therefore no guarantee can be given that they are in working order. Images have been produced for information and it cannot be inferred that any items shown is included with the property. These particulars are believed to be correct but their accuracy is not guaranteed and they do not constitute an offer or form part of a contract. Solicitors are specifically requested to verify the sales particulars details in the pre contract enquiries in particular price, local and other services.