

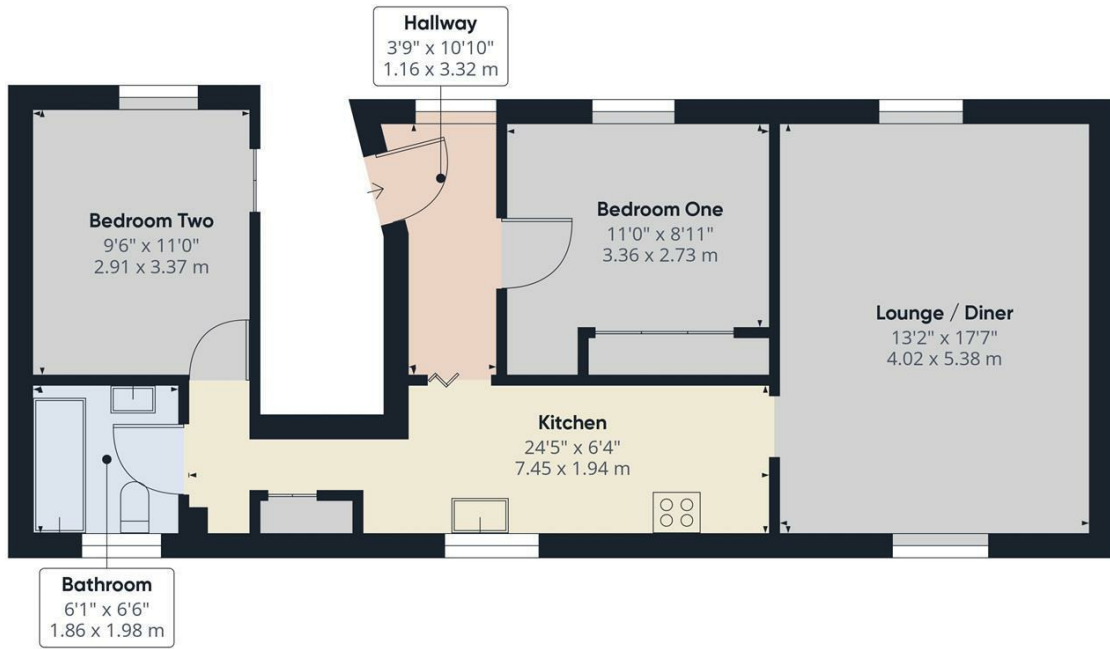


## 7 MADFORD LANE CORNWALL, PL15 9EB

£550 PCM

Julie May Be Gone But The Sun Wah Still Reigns Supreme. And this affordable two bedroom, 2nd floor flat is perfectly positioned just round the corner, so you can grab a quick pint in the Westgate while you wait for your order.

  
athelstans  
PROPERTY AGENTS

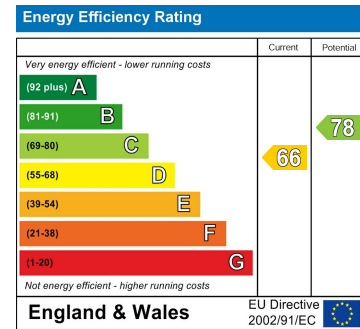


Approximate total area<sup>sq</sup>  
 695.98 ft<sup>2</sup>  
 64.66 m<sup>2</sup>

Excluding balconies and terraces

While every attempt has been made to ensure accuracy, all measurements are approximate, not to scale. This floor plan is for illustrative purposes only.

GIRAFFE360



Agents Note: Whilst every care has been taken to prepare these particulars, they are for guidance purposes only. All measurements are approximate and are for general guidance purposes only and whilst every care has been taken to ensure their accuracy, they should not be relied upon and potential buyers/tenants are advised to recheck the measurements

Head Office Lettings  
 PO Box 185 Launceston  
 Cornwall  
 PL15 0DD

01566 818180  
 lettings@athelstans.co.uk  
 www.athelstans.co.uk

