

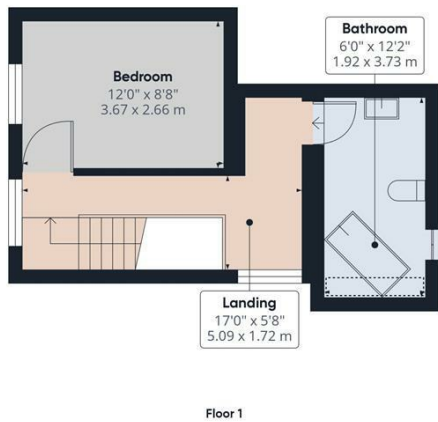
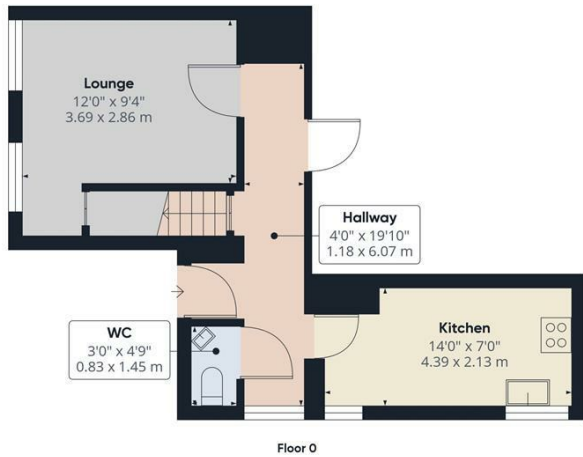


BOROUGH HOUSE FORE STREET LIFTON, PL16 0BH

£650 PER CALENDAR

Live The High Life In The Heart Of The Village. This self-contained one bedroom annex may have an impressive address and a lofty position looking down on Fore Street but it's actually a simple, affordable and manageable place to call home.


athelstans
PROPERTY AGENTS



Approximate total area^m
 622.26 ft²
 57.81 m²

Reduced headroom
 7.32 ft²
 0.68 m²

(1) Excluding balconies and terraces

☒ Reduced headroom
 (below 1.5m/4.92ft)

While every attempt has been made to ensure accuracy, all measurements are approximate, not to scale. This floor plan is for illustrative purposes only.

GIRAFFE360



Energy Efficiency Rating		Current	Potential
Very energy efficient - lower running costs			
(92 plus) A			
(81-91) B			
(69-80) C			71
(55-68) D		43	
(39-54) E			
(21-38) F			
(1-20) G			
Not energy efficient - higher running costs			
England & Wales		EU Directive 2002/91/EC	

Agents Note: Whilst every care has been taken to prepare these particulars, they are for guidance purposes only. All measurements are approximate and are for general guidance purposes only and whilst every care has been taken to ensure their accuracy, they should not be relied upon and potential buyers/tenants are advised to recheck the measurements

Head Office Lettings
 PO Box 185 Launceston
 Cornwall
 PL15 0DD

01566 818180
 lettings@athelstans.co.uk
 www.athelstans.co.uk

athelstans
 PROPERTY AGENTS