



Howard Way, Market Harborough, LE16 9LD

**ANDREW
GRANGER & CO**

Part of
**SHELDON
BOSLEY
KNIGHT**
LAND AND
PROPERTY
PROFESSIONALS

Property Description

A deceptively spacious two bedroomed detached bungalow of excellent proportions occupying a larger than average plot within a highly desirable residential area surrounded by similar properties on the southern side of the thriving town of Market Harborough.



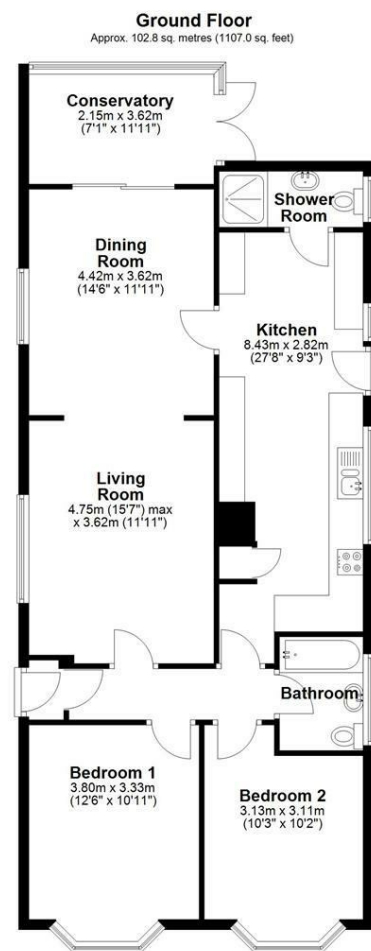


Key Features

- Extended detached bungalow in quiet cul-de-sac location
- Gas central heating with new boiler fitted in past 12 months
- New carpets throughout
- Large kitchen with Shaker Style units
- Appliances included
- Two double bedrooms
- Bathroom and separate shower room
- Private, wrap around garden with lawn and patio areas
- Parking for up to 3 cars with additional garage
- Sun room / conservatory to rear

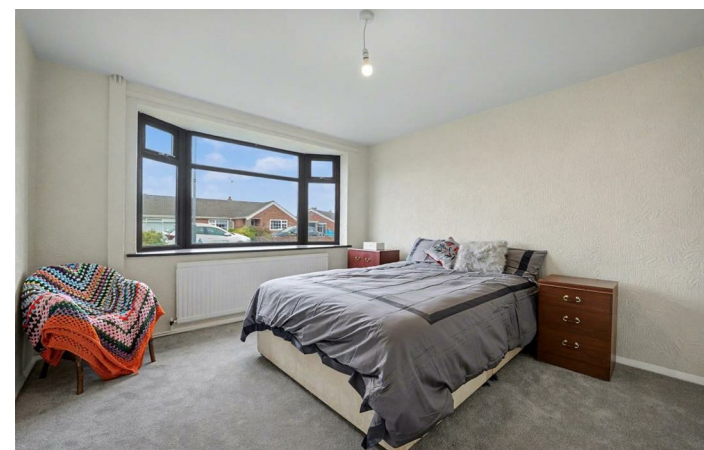
£350,000





Total area: approx. 102.8 sq. metres (1107.0 sq. feet)

All efforts have been made to ensure that the measurements on this floorplan are accurate however these are for guidance purposes only.
Plan produced using PlanUp.



EPC Rating - D

Tenure - Freehold

Council Tax Band -

Local Authority

We routinely refer clients to both our recommended Legal Firm and a panel of Financial Services Providers. It is your decision whether you choose to deal with these companies. In making that decision, you should know that we receive a referral fee



To view this property please contact our Market Harborough (Sales) office
on 01858 431315

Part of
**ANDREW
GRANGER & CO**

Part of
**SHELDON
BOSLEY
KNIGHT**
LAND AND
PROPERTY
PROFESSIONALS