



Wych Elm Road, Leicester, LE2 4EF

Part of  
**ANDREW  
GRANGER & CO**

**SHELDON  
BOSLEY**  
KNIGHT

LAND AND  
PROPERTY  
PROFESSIONALS

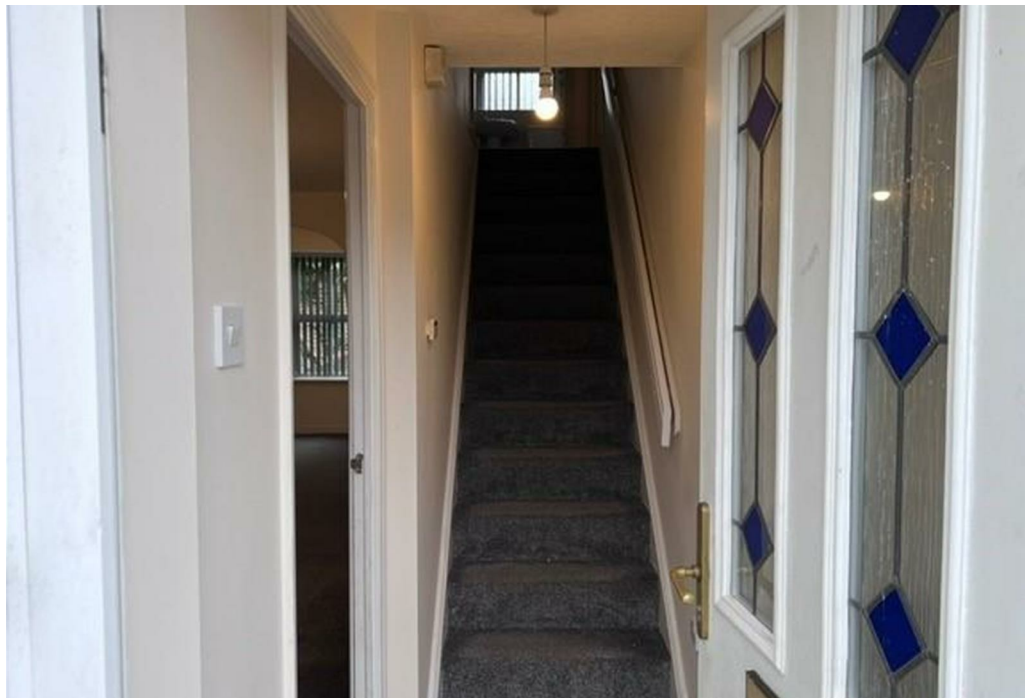


# Property Description

A well presented three bedroom property situated in the popular town of Oadby. The accommodation comprises entrance hall, lounge/diner, newly fitted kitchen, downstairs cloakroom. To the upstairs you will find the master bedroom with en suite and fitted wardrobes, two further bedrooms one with fitted wardrobes, family bathroom. Garden. Garage. Off road parking. Unfurnished. Pets considered £25pcm extra. EPC D. Council Tax C. Rent £1,195pcm. Deposit £1,378. Available middle of May on a fixed term six-month contract with the option to renew.









## Key Features

- Great family home
- Lounge
- Newly fitted kitchen
- Master bedroom with en suite and fitted wardrobes
- Two further bedrooms
- Garden. Pets considered £25pcm extra
- Garage. ORP
- EPC D. Council Tax C
- Rent £1,195pcm. Deposit £1,378
- Available middle of May on a fixed term six-month contract with the option to renew

**£1,195 PCM**